



192 Queen's Gate
SW7

CHESTERTONS





A well-proportioned one-bedroom apartment located on the lower ground floor of a red-brick Victorian townhouse, positioned at the park end of Queen's Gate and within a short distance of Hyde Park.

This red-brick Victorian townhouse is situated at the park end of Queen's Gate, within proximity to Kensington High Street, Gloucester Road, and Knightsbridge, offering access to a wide range of international shops and restaurants.

£3,000 pcm

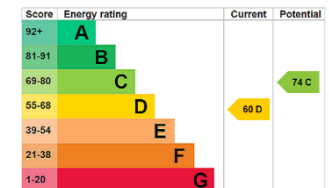
Additional tenant charges apply (fees apply to non-AST tenancies only)

Tenancy Agreement Fee: £300

References per Tenant/Guarantor: £60

Inventory check (approx. £100 – £250 inc. VAT)

chestertons.co.uk/property-to-rent/applicable-fees



Minimum Term: 12 months
Deposit Required: £3,461.54
Local Authority: Westminster
Council Tax Band: F
EPC Rating: D
Furnished

Chestertons Kensington Lettings

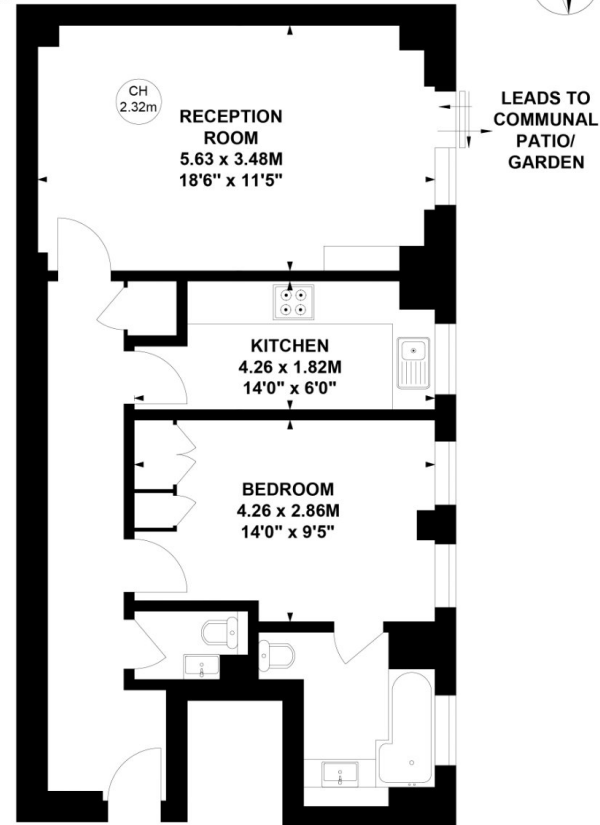
116 Kensington High Street
 Kensington
 London
 W8 7RW

kensingtonlettingsusers@chestertons.co.uk
 02079377260

Queen's Gate, SW7

Approximate gross internal area
57.12 sq m / 615 sq ft

Key :
CH - Ceiling Height



Lower Ground Floor

This plan is not to scale and must be used as layout guidance only. All measurements and areas are approximate and should not be relied upon to provide accurate information. This plan must not be relied upon when making property valuations, design considerations or any other such relevant decisions. We accept no responsibility or liability (whether in contract, tort or otherwise) in relation to any loss whatsoever arising from or in connection with any use of this plan or the adequacy, accuracy or completeness of it or any information within it.

Chesterton UK Services Limited trading as Chestertons for themselves and for the vendor of this property whose agents they are, give notice that (i) these particulars do not constitute any part of an offer or contract, (ii) all statements contained within these particulars are made without responsibility on the part of Chestertons or the vendor, (iii) whilst made in good faith, none of the statements contained within these particulars are to be relied upon as a statement or representation of fact, (iv) any intending purchasers must satisfy themselves by inspection or otherwise as to the correctness of each of the statements contained within these particulars, (v) the vendor does not make or give either Chestertons or any person in their employment any authority to make or give representation or warranty whatsoever in relation to this property. Wide angle lenses may be used. ©Copyright Chestertons | Chesterton Global Ltd | Registered Office 5th Floor, The Lantern, 75 Hampstead Road, London, NW1 2PL Registered Company Number 05334580.



This paper is
100% recyclable