



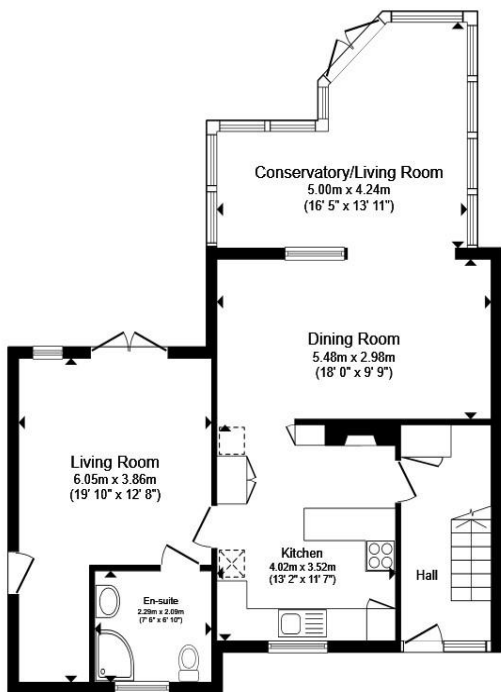
Windermere Drive, Spondon, DERBY, DE21 7JX

welcome to

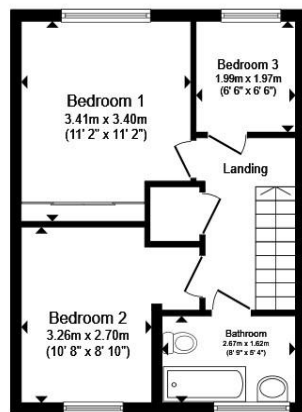
Windermere Drive, Spondon DERBY

A beautifully presented and highly versatile four-bedroom family home, including a self-contained extension and charming, fully serviced outbuildings (Shepherd's hut and wooden lodge) with a generous low-maintenance garden, patio areas and sunlight throughout the day.

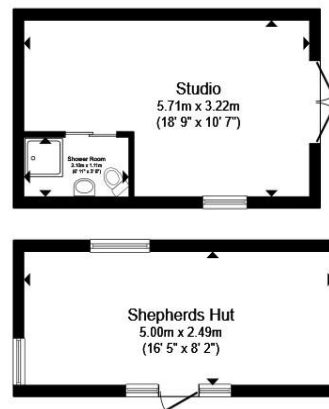




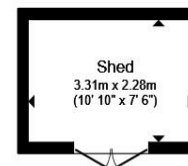
Ground Floor



First Floor



Outbuilding



Total floor area 160.1 m² (1,724 sq.ft.) approx

This floor plan is for illustrative purposes only. It is not drawn to scale. Any measurements, floor areas (including any total floor area), openings and orientation are approximate. No details are guaranteed, they cannot be relied upon for any purpose and they do not form part of any agreement. No liability is taken for any error, omission or misstatement. A party must rely upon its own inspection(s). Powered by www.propertybox.io



Living/Bedroom 4

19' 10" MAX x 12' 8" MAX (6.05m MAX x 3.86m MAX)

Dining Room / Sitting Area

18' MAX x 9' 9" MAX (5.49m MAX x 2.97m MAX)

Conesrvatory

16' 5" MAX x 13' 11" MAX (5.00m MAX x 4.24m MAX)

Kitchen

13' 2" MAX x 11' 7" MAX (4.01m MAX x 3.53m MAX)

Bedroom 1

11' 2" MAX x 11' 2" MAX (3.40m MAX x 3.40m MAX)

Bedroom 2

10' 8" MAX x 8' 10" MAX (3.25m MAX x 2.69m MAX)

Bedroom 3

6' 6" MAX x 6' 6" MAX (1.98m MAX x 1.98m MAX)

Bathroom

8' 9" MAX x 5' 4" MAX (2.67m MAX x 1.63m MAX)

Wooden Lodge

18' 9" MAX x 10' 7" MAX (5.71m MAX x 3.23m MAX)

Shepherd's Hut

16' 5" MAX x 8' 2" MAX (5.00m MAX x 2.49m MAX)

welcome to

Windermere Drive, Spondon DERBY

- Four-bedroom home including a versatile self-contained side extension with en-suite, plus two double bedrooms and one single bedroom - ideal for multi-generational living
- Modern open-plan kitchen with integrated appliances
- Main living space with log/coal fire leading into a bright, heated conservatory for year-round use
- Generous, private rear garden with patio, artificial lawn and multiple seating areas
- Self-contained Shepherd's hut and large wooden lodge, both with full facilities - offering excellent potential for home business, guest accommodation or additional income

This thoughtfully presented and highly versatile four-bedroom semi-detached home in the village of Spondon, Derby, offers spacious, well-designed living combining comfort, style and flexibility.

A welcoming hallway leads through the home, with natural light enhanced by a Velux window above the staircase. The kitchen is fully equipped, offering plenty of counter space, storage and modern appliances and seamlessly connects to an open dining and lounge area, where a log or coal fireplace adds warmth and creates a welcoming, social atmosphere. A large, light-filled conservatory with heating and patio doors offers year-round use and direct access to the garden.

The ground floor features a self-contained extension with en-suite, separate entrance and patio doors, providing excellent flexibility. Upstairs offers three well-proportioned bedrooms, including a modern family bathroom and additional storage. Two separate loft spaces with lighting, ladder access, providing excellent additional storage.



view this property online [bagshawsresidential.co.uk/Property/DBY121433](https://www.bagshawsresidential.co.uk/Property/DBY121433)

Please note the marker reflects the postcode not the actual property



Property Ref:
DBY121433 - 0008

1. MONEY LAUNDERING REGULATIONS Intending purchasers will be asked to produce identification documentation at a later stage and we would ask for your co-operation in order that there is no delay in agreeing the sale. 2. These particulars do not constitute part or all of an offer or contract. 3. The measurements indicated are supplied for guidance only and as such must be considered incorrect. Potential buyers are advised to recheck measurements before committing to any expense. 4. We have not tested any apparatus, equipment, fixtures or services and it is in the buyers interest to check the working condition of any appliances. 5. Where an EPC, or a Home Report (Scotland only) is held for this property, it is available for inspection at the branch by appointment. If you require a printed version of a Home Report, you will need to pay a reasonable production charge reflecting printing and other costs. 6. We are not able to offer an opinion either written or verbal on the content of these reports and this must be obtained from your legal representative. 7. Whilst we take care in preparing these reports, a buyer should ensure that his/her legal representative confirms as soon as possible all matters relating to title including the extent and boundaries of the property and other important matters before exchange of contracts.

Bagshaws Residential is a trading name of Sequence (UK) Limited which is registered in England and Wales under company number 4268443, Registered Office is Cumbria House, 16-20 Hockliffe Street, Leighton Buzzard, Bedfordshire, LU7 1GN. VAT Registration Number is 500 2481 05.



bagshaws residential



01332 361308



Derby@bagshawsresidential.co.uk



32-34 Cornmarket, DERBY, Derbyshire, DE1 2DG



[bagshawsresidential.co.uk](https://www.bagshawsresidential.co.uk)