



Jerningham Road, SE14

£1,850,000

Dexters



Jerningham Road, SE14

Elegant 4 Bedroom Victorian End-of-Terrace in sought after Telegraph Hill, SE14 with 3,065 sq ft of internal space and City Views.

Nestled on a tree-lined street in the heart of Telegraph Hill and with views of both Telegraph Hill Parks, this substantial 5 bedroom semi-detached Victorian home offers an exceptional blend of period charm, generous proportions, and modern potential. Spanning an impressive 3,065 sq ft, the property presents a rare opportunity to acquire a family home with stunning Skyline views and scope for further improvements.

Located moments from the green open spaces of Telegraph Hill Parks, the property is within easy reach of excellent local schools, independent cafés, and transport links, including Nunhead and New Cross Gate stations, providing swift access to London Bridge and the City.

Features

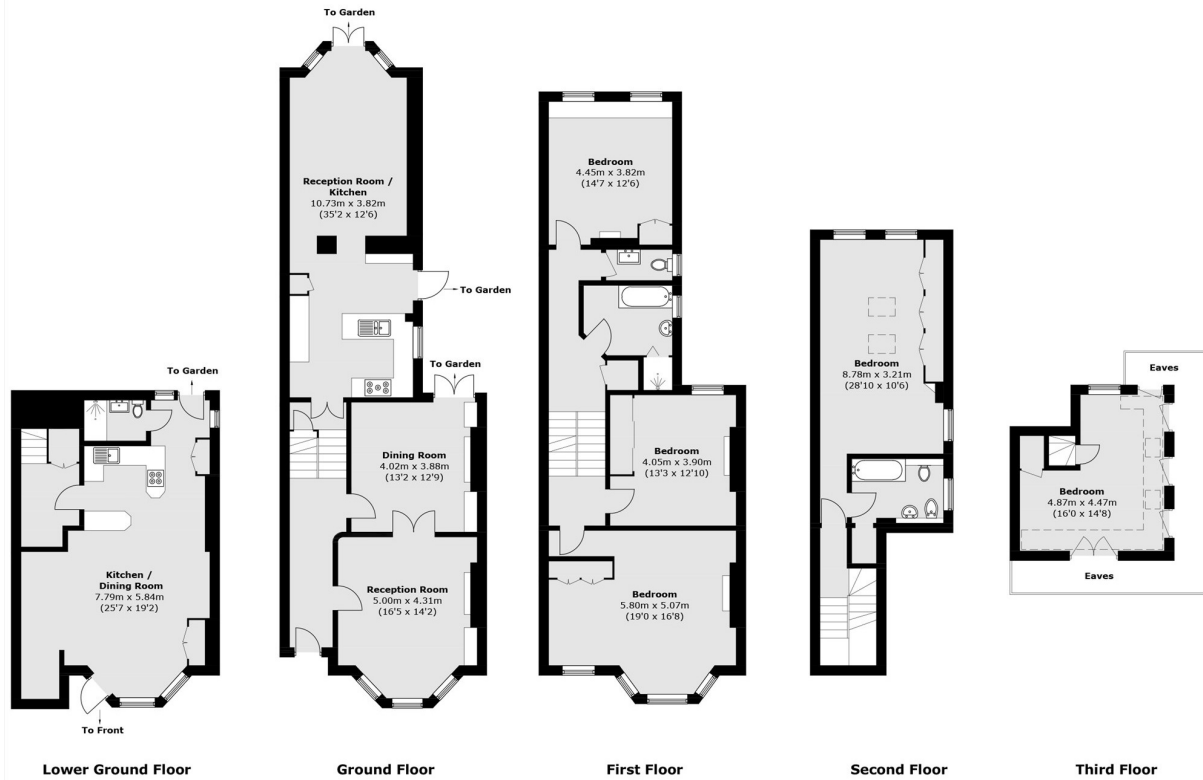
- Period Home
- 3,065sq ft
- Private Garden
- Driveway
- Semi Detached
- 4/5 Bedrooms







Jerningham Road, London, SE14



Total area (approx.): 284.8 sq. m (3,065.6 sq. ft)
(Excluding Eaves)