



Cefn-y-Lon, £220,000

- Outbuilding in Rear Garden
- Open-Plan Lounge, Dining, Kitchen Area and useful utility area
- Nearby Schools
- Popular Penyrheol location in Caerphilly and close to Local Amenities
- Ideal for first-time buyers or families
- Lovely three-bedroom semi-detached property
- Spacious front driveway providing off-road parking



 3  1  1



About the property

Situated in the sought-after Penyrheol area of Caerphilly, this lovely three-bedroom semi-detached property offers spacious and well-presented accommodation, ideal for families and first-time buyers alike.

The ground floor comprises an entrance hallway leading into a comfortable living room, which flows seamlessly into a spacious fitted kitchen/diner, creating an excellent open-plan living space perfect for everyday family life and entertaining. A useful utility area adds further practicality.

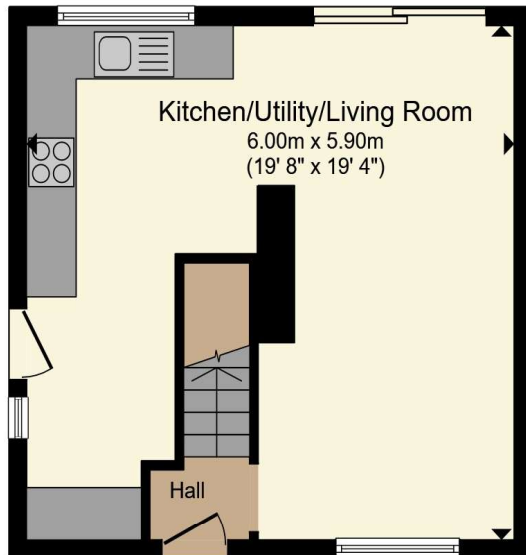
To the first floor, there are three good-sized bedrooms along with a modern family bathroom. Externally, the property benefits from a spacious driveway to the front, with a pathway leading to the front entrance and side access to the rear garden. The landscaped rear garden has been designed for low maintenance and enjoyment, featuring a patio seating area, artificial lawn, and storage sheds.

Accommodation

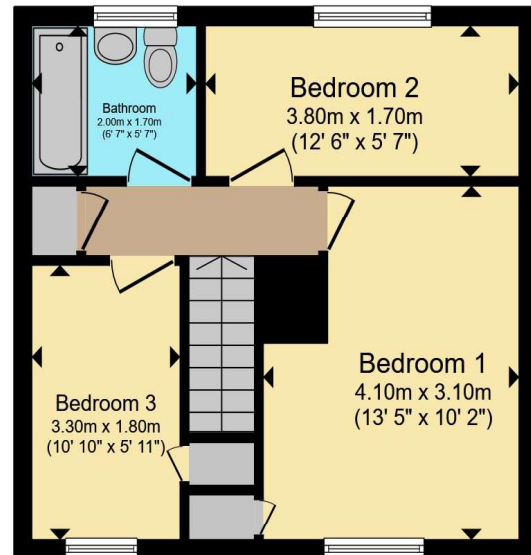
This attractive home combines comfort, convenience, and outdoor space in a desirable residential location.



Floorplan



Ground Floor



First Floor

Total floor area 68.4 m² (737 sq.ft.) approx

This floor plan is for illustrative purposes only. It is not drawn to scale. Any measurements, floor areas (including any total floor area), openings and orientation are approximate. No details are guaranteed, they cannot be relied upon for any purpose and they do not form part of any agreement. No liability is taken for any error, omission or misstatement. A party must rely upon its own inspection(s). Powered by www.propertybox.io



Important Information

Note while we endeavour to make our sales details accurate and reliable, if there is any point which is of particular interest to you, please contact the office and we will be pleased to confirm the position for you. We have not personally tested any apparatus, equipment, fixtures, fittings or services and cannot verify they are in working order or fit for their purposes. Nothing in these particulars is intended to indicate that carpets or curtains, furnishings or fittings, electrical goods (whether wired or not). Gas fires or light fittings or any other fixtures not expressly included form part of the property offered for sale. This computer generated Floorplan, if applicable, is intended as a general guide to the layout and design of the property. It is not to scale and should not be relied upon for dimensions. Tenure: We cannot confirm the tenure of the property as we have not had access to the legal documents. The buyer is advised to obtain verification from their solicitor or surveyor.

Peter Alan Limited is registered in England and Wales under company number 2073153, Registered Office is Cumbria House, 16-20 Hockliffe Street, Leighton Buzzard, Bedfordshire, LU7 1GN. VAT Registration Number is 500 2481 05. For activities relating to regulated mortgages and non-investment insurance contracts, Peter Alan Limited is an appointed representative of Connells Limited which is authorised and regulated by the Financial Conduct Authority. Connells Limited's Financial Services Register number is 302221. Most buy-to-let