







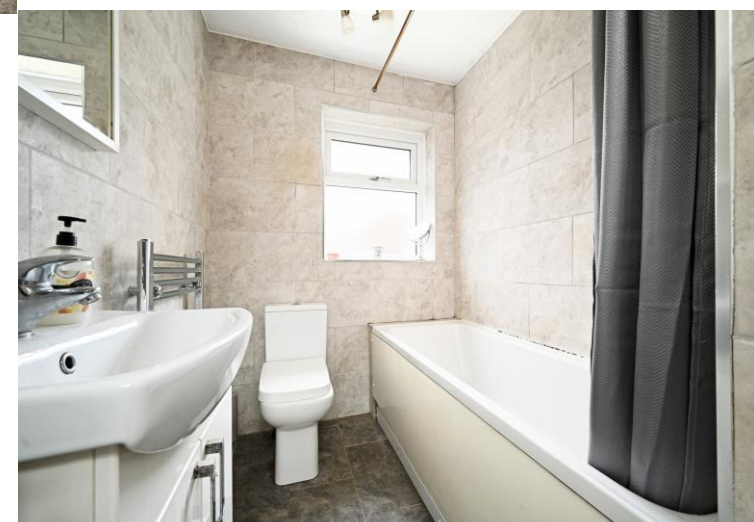
39 Peterdale Road

Brimington • Chesterfield • S43 1JA

Guide Price £175,000 to £180,000

A modern and well-presented two double bedroom semi-detached home situated in the popular area of Brimington. The location offers a range of everyday amenities, regular bus routes into Chesterfield and neighbouring areas, and excellent access to the M1, making it an ideal first home or a superb choice for professionals. Stepping through the entrance hall, you are welcomed into a bright living room featuring a charming fireplace. Beyond this sits the fitted kitchen, offering ample storage and integrated appliances. To the rear, a spacious conservatory provides a flexible additional reception room, dining space or hobby area, with double French doors opening out onto the garden. Upstairs, the main bedroom faces the front of the property and offers a generous double space. The second bedroom, also a double, ideal as an office, study or versatile guest room which faces the rear. Completing the first floor is a tiled three-piece bathroom suite with bath, washbasin and WC. Externally, the property enjoys an enclosed and private rear garden with both lawn and patio areas, perfect for outdoor seating. The front of the home features a neatly presented pebbled area alongside driveway parking and an attached garage with composite door and sectional electric garage door. The garage also includes a rear door providing convenient access directly into the garden.





- Modern Two Bedroom Semi Detached House
- Excellent Access to Chesterfield and the M1
- Bright Living Room with Fireplace
- Fitted Kitchen with Storage & Integrated Appliances
- Spacious Versatile Conservatory
- Two Good Sized Bedrooms
- Tiled Three Piece Suite Bathroom
- Private Rear Garden with Lawn & Patio
- Driveway & Attached Garage
- Council Tax Band A/EPC Rating D

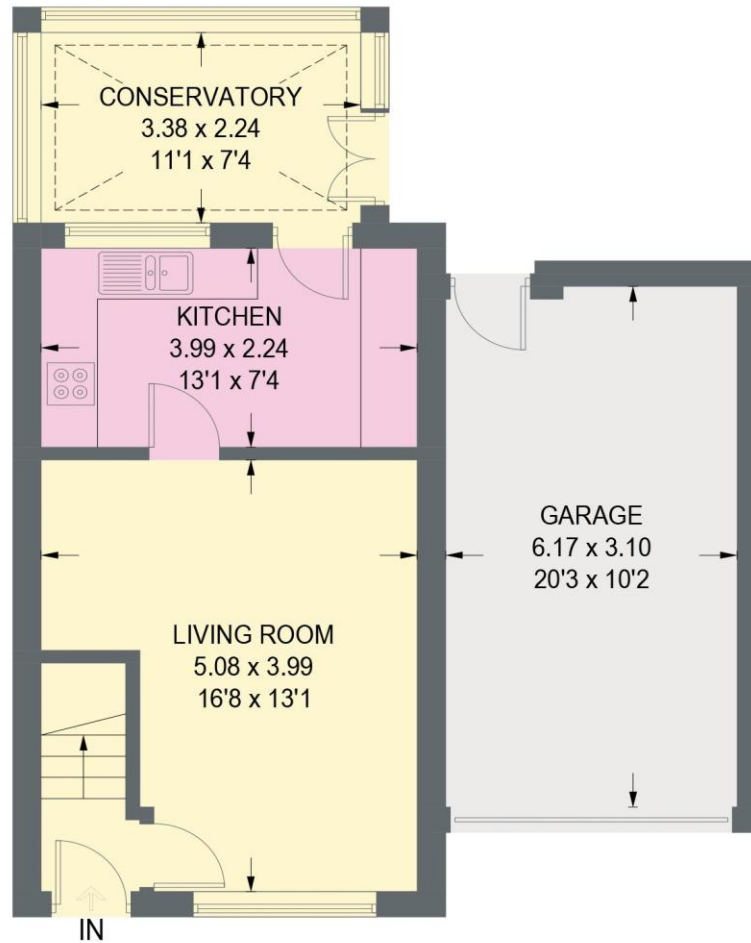


39 PETERDALE ROAD

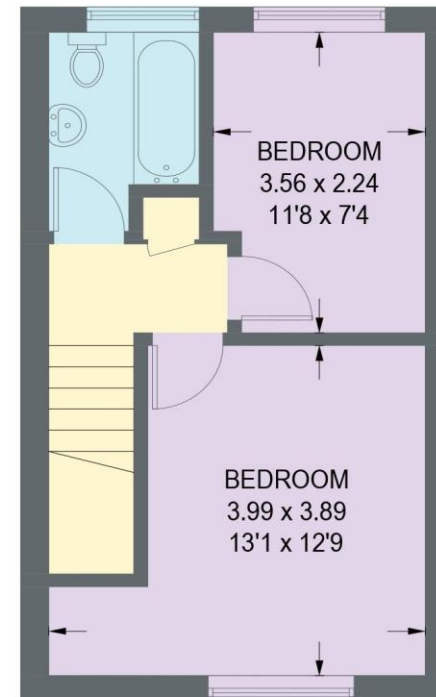
APPROXIMATE GROSS INTERNAL AREA = 69.8 SQ M / 751 SQ FT

GARAGE = 19.0 SQ M / 204 SQ FT

TOTAL = 88.8 SQ M / 955 SQ FT



GROUND FLOOR
39.4 SQ M / 424 SQ FT



FIRST FLOOR
30.4 SQ M / 327 SQ FT

Illustration for identification purposes only,
measurements are approximate, not to scale.

