

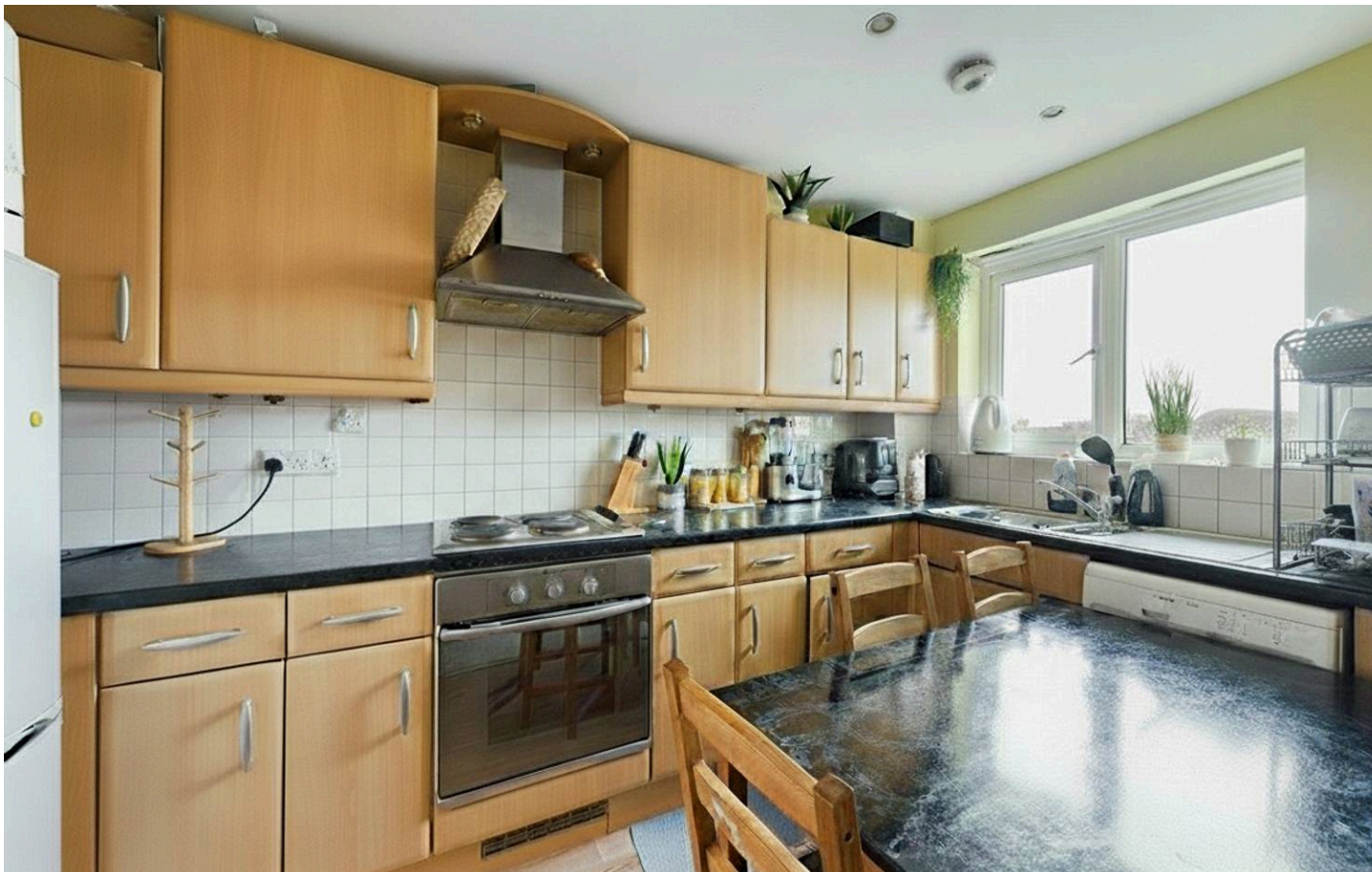


Clarendon Court, 256 Harrow View – HA2 6QJ

Guide Price £340,000 | Leasehold



LAWRENCE RAND



Key Features & Description

- Two Double Bedrooms
- Two Bathrooms
- Resident Parking
- Juliet Balcony
- Separate Kitchen And Living Area

A stable, income-producing asset with a long-standing tenant in situ, offering immediate yield and future rental uplift potential under standard market review conditions

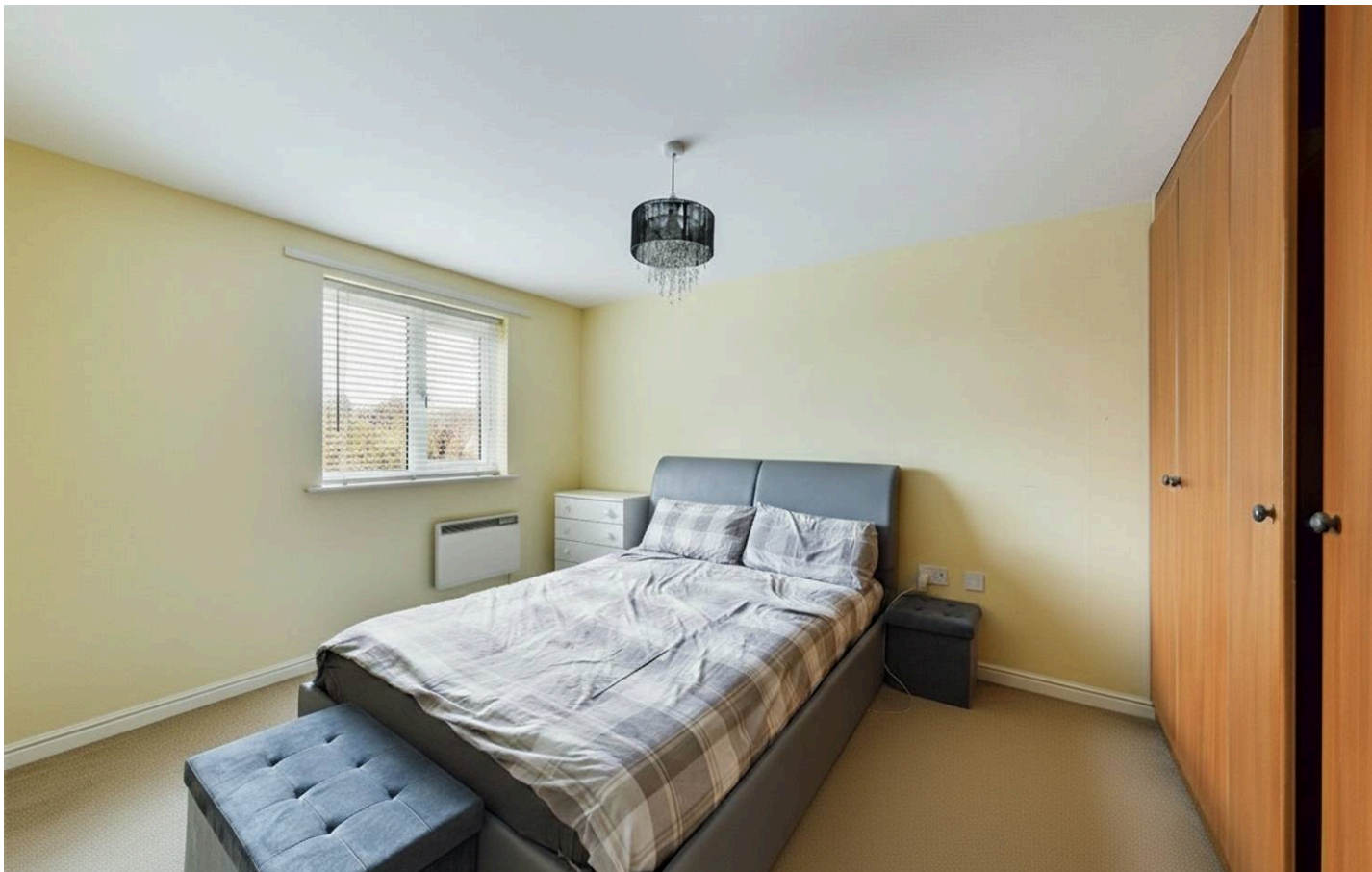
Ideally positioned for excellent transport connections into Central London, this well-presented two double bedroom second-floor flat is located just a short walk from Harrow & Wealdstone station, along with a wide range of local amenities including restaurants, bars, and shops.

Set within a private, gated development, the property benefits from an allocated parking space, a long lease, secure entry via an entry phone system, and access through a well-maintained communal hallway.

The accommodation comprises a welcoming hallway. The bright and spacious reception room features a Juliet balcony, allowing for an abundance of natural light. The kitchen is fitted with a range of base and eye-level unit. The master bedroom is a large double with fitted wardrobes and a modern en-suite shower room. There is also a second double bedroom and a separate family bathroom.

Presented with care by Lawrence Rand -helping you find the place you'll love to call home.





Nearest stations

Harrow & Wealdstone station – Approx. 0.6 miles

Headstone Lane station – Approx 0.8 miles

Harrow-on-the-Hill station – Approx 1.1 miles

Harrow and its surrounding neighbourhoods offer a vibrant yet suburban lifestyle, combining excellent transport connections to Central London with a wealth of local amenities. The area features a mix of boutique shops, cafés, restaurants, and supermarkets, alongside well-regarded schools, parks, and recreational facilities.

Verified Material Information

Council Tax band: C

EPC Energy Efficiency Rating: C

Suppliers:

Electricity supply: Mains,

Water supply: Mains water

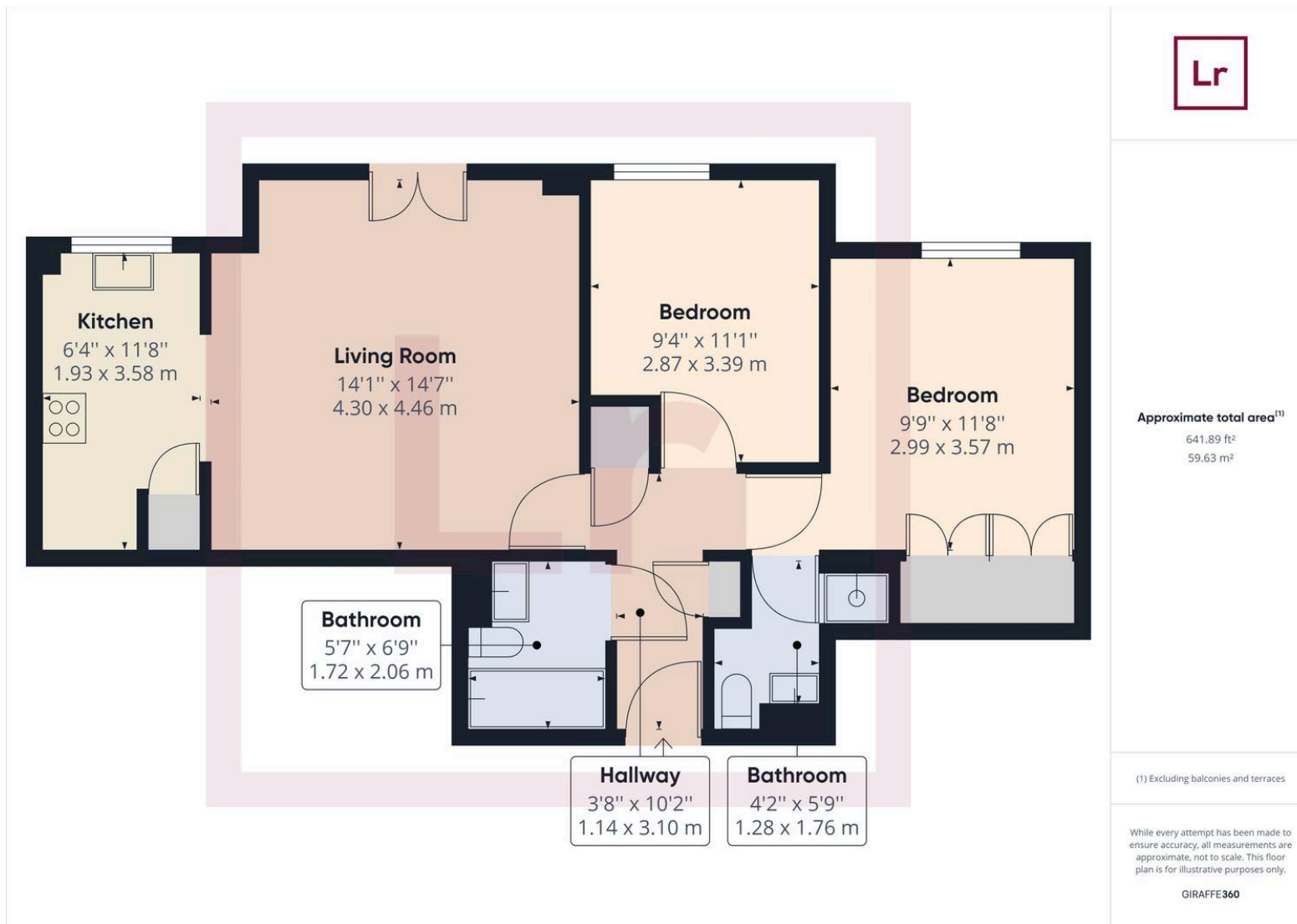
Sewerage: Mains

Heating: Gas central heating

Broadband & mobile coverage:

Broadband: FTTP (Fibre to the Premises)
Mobile coverage: O2 - Excellent, Vodafone - Excellent, Three - Excellent, EE - Excellent





Lawrence Rand
51 Victoria Road, Ruislip - HA4 9BH
01895 632211
sales@lawrence-rand.co.uk
www.lawrence-rand.co.uk

Lawrence Rand Limited has made every reasonable effort to ensure the accuracy of the information provided. However, we accept no responsibility for errors, omissions, or misstatements. All measurements, distances, and descriptions are approximate and for guidance only. Prospective purchasers or tenants must verify all details independently. Some images may include AI-generated virtual staging to illustrate the potential of the property and are for visual guidance only. No warranty is given or implied, and these particulars do not form part of any offer or contract. Lawrence Rand reserves the right to amend or withdraw any property without notice.