



Oakley Road, Kenilworth, CV8 2UL

Property Description

***AVAILABLE NOW - 2024 NEW BUILD HOME - DEPOSIT ALTERNATIVE AVAILABLE ***

Four-bedroom detached family home located to the east side of Kenilworth, off the desirable Glasshouse Lane. The perfect location for commuters with easy access to the A46 and M40. Stoneleigh View enjoys beautiful countryside views whilst being less than a mile and a half to the centre of town. Less than 5 miles from Coventry and just 6 miles from both Warwick and Leamington Spa. Short distance from Kenilworth railway station, offering services to Coventry and Leamington Spa.

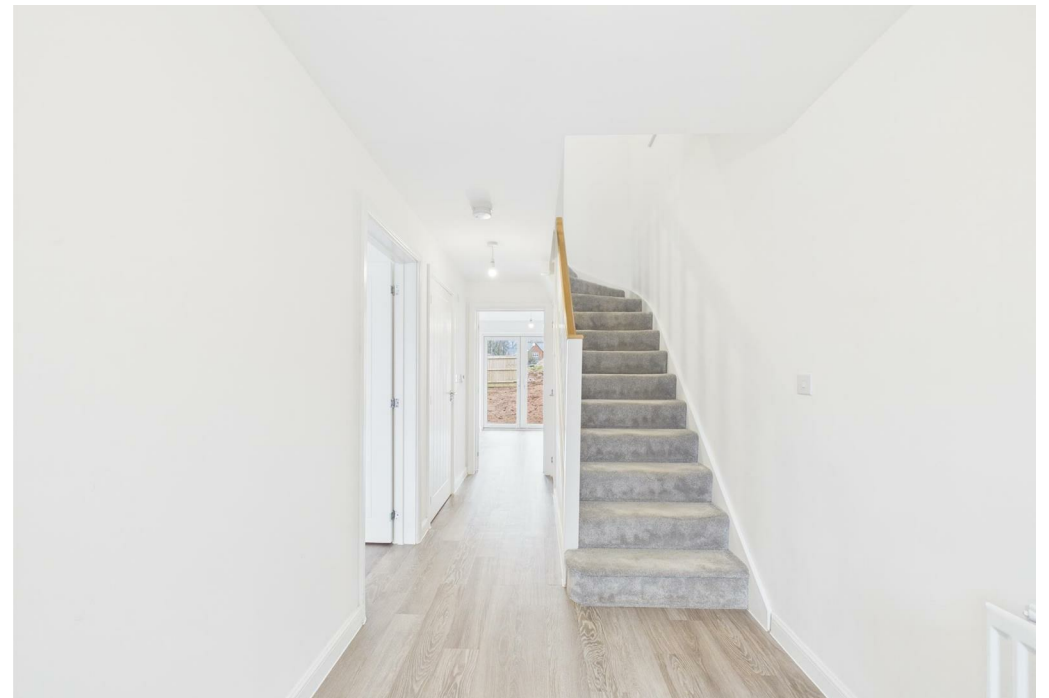
This spacious home comprises in brief: Entrance hallway, living room to the front elevation, guest cloakroom, breakfast kitchen with integrated appliances included (dishwasher and fridge/freezer) separate utility room with space to add your own washing machine and tumble drier. Direct access to the rear private garden is accessed via patio doors.

To the first floor: Four bedrooms, with the principal bedroom benefitting from an ensuite shower room. Family bathroom with full suite including shower over bath.

Private rear garden since laid to lawn with patio area for al-fresco dining in the warmer months.

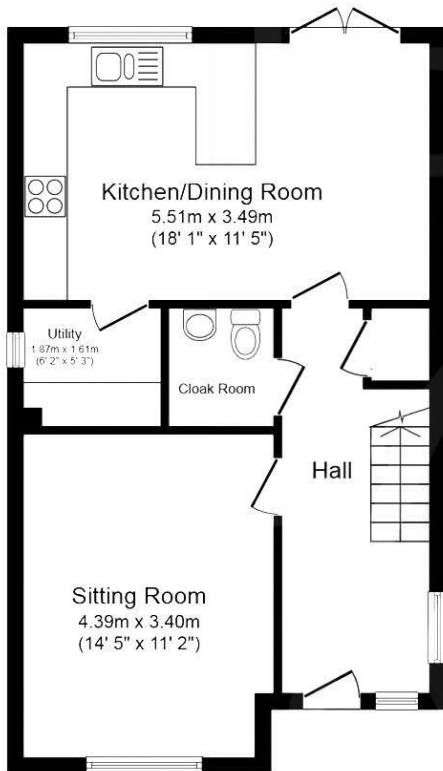
With EV Charger, single garage and driveway parking for multiple cars this property is offered UNFURNISHED. Council Tax Band F. Energy Rating B. Please note that the garden is currently awaiting new turf.



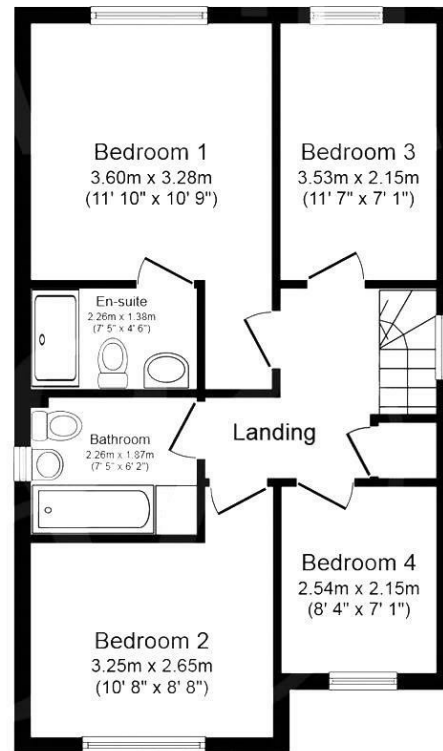


Key Features

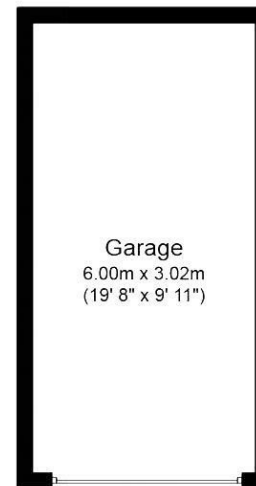
- AVAILABLE NOW
- Kenilworth
- Four Bedrooms, Two Bathrooms & Separate Utility Room
- Detached Family Home
- NEW BUILD 2024
- Single Garage, EV Charger & Driveway Parking
- Private Rear Garden with Patio Area
- Walking Distance to High School
- Energy Rating B
- Council Tax Band F



Ground Floor



First Floor



Garage

Total floor area 121.2 m² (1,305 sq.ft.) approx

This plan is for illustration purposes only and may not be representative of the property. Plan not to scale. Powered by PropertyBox

£2,100 PCM