



null Bed
Not specified
located in

£500 Per Calendar
Month



G R E G O R Y S
— E S T A T E A G E N T S —

The Old Mill Mead Lane
Saltford
BS31 3ER



null



null

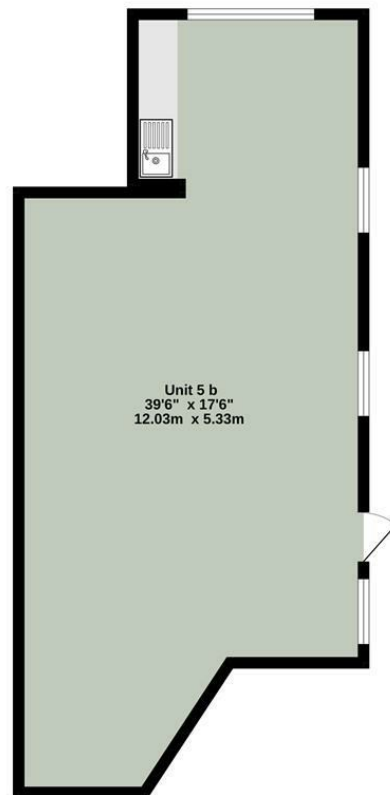


null





Ground Floor
Commercial Premises
721 sq.ft. (67.0 sq.m.) approx.



Mixed Commercial Premises

TOTAL FLOOR AREA - 721 sq.ft. (67.0 sq.m.) approx.

Whilst every attempt has been made to ensure the accuracy of the floorplan contained herein, measurements of doors, windows, rooms and any other items are approximate and no responsibility is taken for any error, omission or mis-statement. This plan is for illustrative purposes only and should be used as such by any prospective purchaser. The services, systems and appliances shown have not been tested and no guarantee as to their operability or efficiency can be given.
Made with Metropix C2025

Energy Efficiency Rating		
	Current	Potential
Very energy efficient - lower running costs		
(92 plus) A		
(81-91) B		
(69-80) C		
(55-68) D		
(39-54) E		
(21-38) F		
(1-20) G		
Not energy efficient - higher running costs		
England & Wales		EU Directive 2002/91/EC

DIRECTIONS

CONTACT

Unit 1 Market Walk
Keynsham
Bristol
BS31 1FS

E: enquiries@gregorys.click
T: 01179 866644
gregorys.click



G R E G O R Y S
— E S T A T E A G E N T S —