

# Tilstone Close

Windsor • • SL4 6NG  
Offers In Excess Of: £525,000



coopers  
est 1986

# Tilstone Close

Windsor • • SL4 6NG

\*NO CHAIN\*

Nestled in the desirable Berkshire village of Eaton Wick, this charming detached chalet bungalow boasts field and stream views.

Detached Chalet Bungalow

Sought-After Location

No Chain

Off-Street Parking

Scenic Views

En-Suite To Master Bedroom

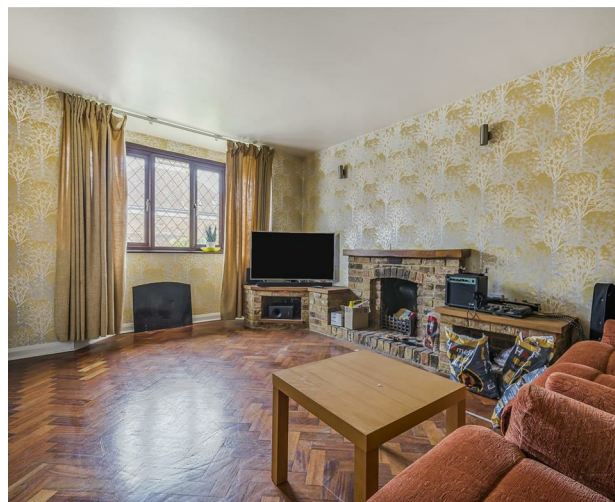
Garage

Conservatory

Local Amenities Close By

Near Eaton College

These particulars are intended as a guide and must not be relied upon as statements of fact. Your attention is drawn to the Important Notice on the last page.





The ground floor features an inviting entrance hall leading to a spacious living room with bay windows that flood the space with natural light. The well-equipped kitchen and dining room include integrated appliances, while a bright and airy conservatory sits adjacent. This level also offers two versatile, well-proportioned bedrooms and a family bathroom.

Upstairs, you'll find a dedicated study and a generous master bedroom complete with an en-suite shower room.

Additional highlights include driveway parking, a garage, and a private enclosed rear garden, all overlooking stunning countryside scenery.

Subject to probate





### Schools:

Eton Wick CofE First School 0.6 miles  
Western House Academy 1.0 miles  
Dedworth Middle School 1.2 miles



### Train:

Windsor & Eton Central Station 1.7 miles  
Windsor & Eton Riverside Station 1.8 miles  
Burnham Station 1.9 miles



### Car:

M4, A40, M25, M40



### Council Tax Band:

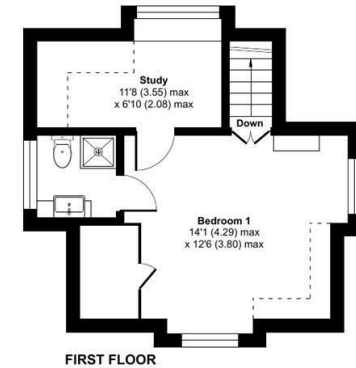
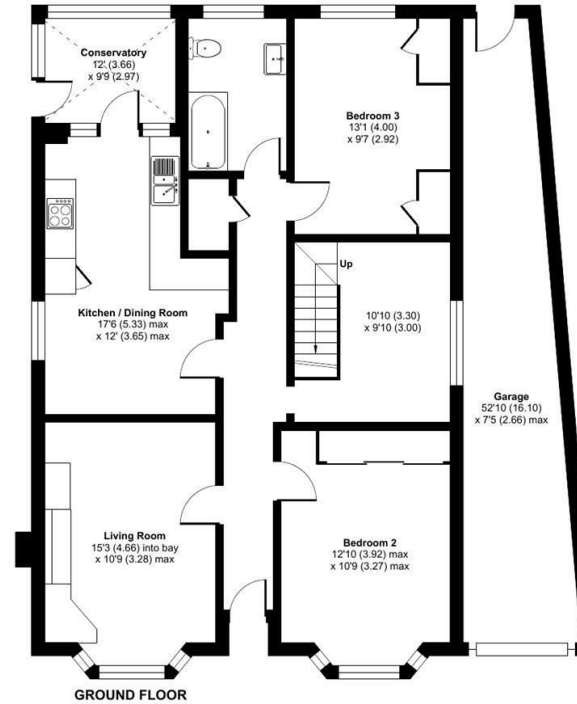
E

(Distances are straight line measurements from centre of postcode)



## Tilstone Close, Eton Wick, Windsor, SL4

Approximate Area = 1280 sq ft / 118.9 sq m  
Limited Use Area(s) = 32 sq ft / 2.9 sq m  
Garage = 226 sq ft / 20.9 sq m  
Total = 1538 sq ft / 142.7 sq m  
For identification only - Not to scale

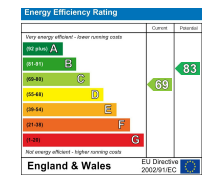


Floor plan produced in accordance with RICS Property Measurement 2nd Edition, incorporating International Property Measurement Standards (IPMS2 Residential). © nichecom 2025. Produced for Coopers. REF: 1257947



01628 232 550  
42 Queen Street, Maidenhead,  
, SL6 1HZ  
maidenhead@coopersresidential.co.uk

CoopersResidential.co.uk



Important Notice: These particulars, whilst believed to be accurate are set out as a general outline only for guidance and do not constitute any part of an offer or contract. Intending purchasers should not rely on them as statements or representation of fact, but must satisfy themselves by inspection or otherwise has the authority to make or give any representation or warranty in respect of the property.