



Price
£240,000

Freehold

3x  1x  1x 

**Western Road, Shanklin,
Isle Of Wight, PO37**

OVER 60?

Secure this property
for up to **59% less!**

Pittis 
Helping you move forwards



Main features

- Large character house in Shanklin town centre
- Very short walk into town and local amenities
- In need of some modernisation and upgrading
- Good sized garden to the rear with off road parking to the front

Accommodation

GROUND FLOOR

Porch
 Hallway
 Cloakroom
 Lounge: 12'3 x 11'10 (3.74m x 3.61m)
 Dining Area: 11'10 x 11'5 (3.61m x 3.48m)
 Conservatory: 13'11 x 9'9 (4.24m x 2.97m)
 Kitchen: 15'11 x 6'7 (4.85m x 2.01m)
 Bathroom

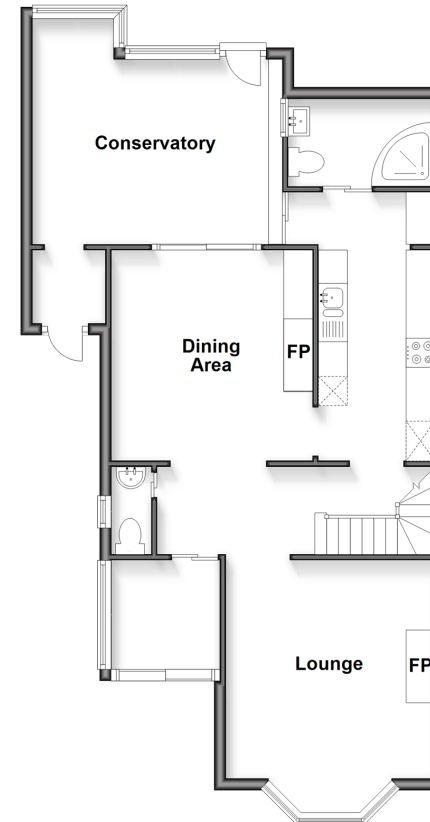
FIRST FLOOR

Landing
 Bedroom 1: 12'2 x 10'9 (3.71m x 3.28m)
 Bedroom 2: 11'11 x 10'6 (3.63m x 3.20m)
 Bedroom 3: 11'5 x 6'8 (3.48m x 2.03m)
 Shower Room

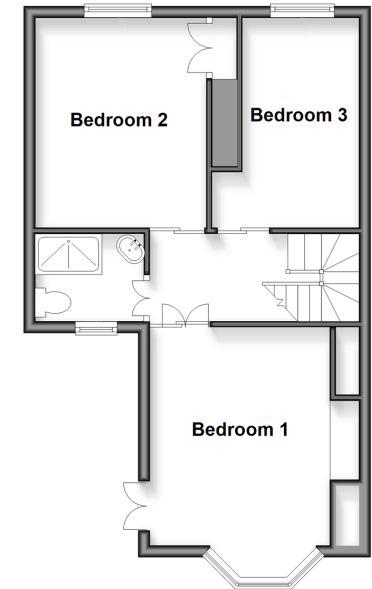
OUTSIDE

Driveway
 Rear Gardens

Ground Floor
 Approx. 71.0 sq. metres (784.3 sq. feet)



First Floor
 Approx. 43.3 sq. metres (466.3 sq. feet)



Unable to display material information. Please check with the branch for material information details for this property



60619788/20260421/DW/RC