



Woburn Place, WC1H

£1,975 Per calendar month

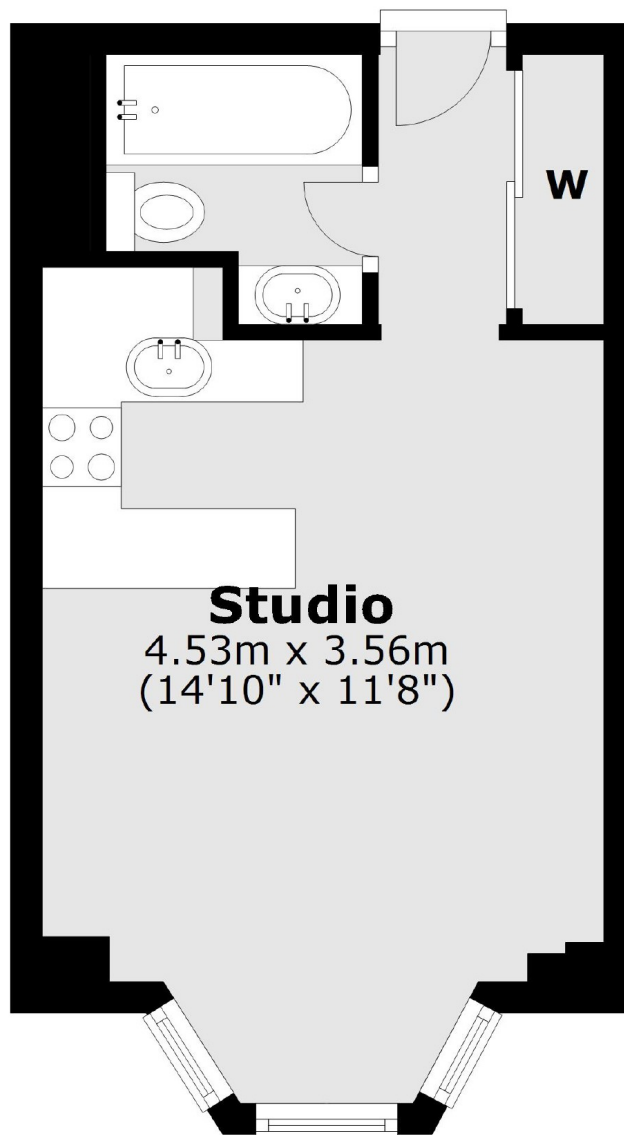
A spacious studio apartment on the first floor of this purpose built building with a 24 hour porter. The flat has wooden floors, double bed and good storage space with a separate bathroom.

Russell Court is located around the corner from Russell Square tube station and down the road from the entrance to the Brunswick Centre, ideal for those wanting to be close to local transport and local shopping facilities.

Features

- Studio Flat
- Open Plan
- 24 hour Porter
- Wooden Floors
- Heating & Hot Water Inc
- Lift

Woburn Place,
London, WC1H



Total area: approx. 22.1 sq. metres (238.0 sq. feet)

Dexters

Bloomsbury
55-56 Coram Street
London
WC1N 1HB
Lettings
020 7833 4488

Energy Rating: C. We aim to make our particulars both accurate and reliable. However they are not guaranteed; nor do they form part of an offer or contract. If you require clarification on any points then please contact us, especially if you're traveling some distance to view. Please note that appliances and heating systems have not been tested and therefore no warranties can be given as to their good working order.

 **RICS** | Regulated
Estate Agent
and Letting Agent

dexters.co.uk