



**3 Bed House
located in
Grove Mews, Woodingdean,
Brighton**

MyHaus.

**2 Grove Mews
Woodingdean
Brighton
BN2 6RN**

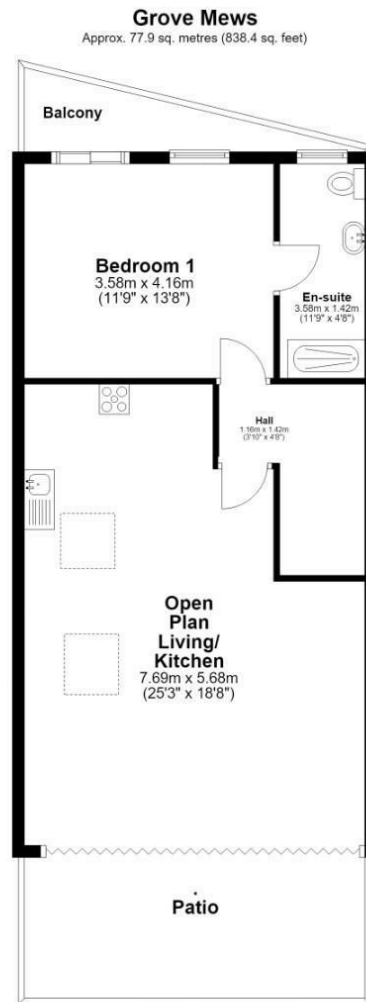
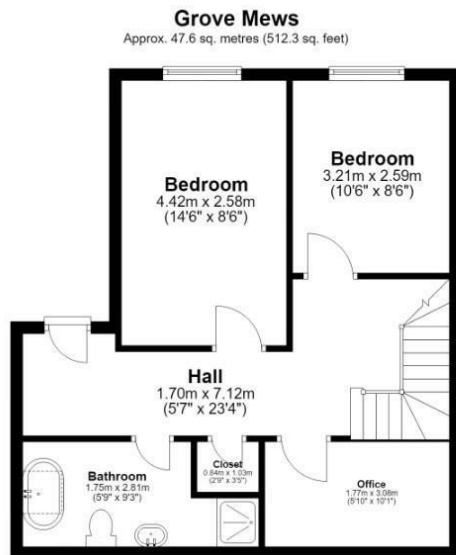


**Offers In Excess Of
£700,000**

Ready for Summer 2026, Grove Mews offers the rare opportunity to do more than simply buy a new home, it gives you the chance to make it your own.

For buyers reserving during the current phase of construction, there's still time to personalise key finishes, including kitchens, bathrooms and selected interior details, creating a home that reflects your own style before you even collect the keys.





Total area: approx. 125.5 sq. metres (1350.8 sq. feet)

Energy Efficiency Rating		
	Current	Potential
<i>Very energy efficient - lower running costs</i>		
(92 plus) A		
(81-91) B		
(69-80) C		
(55-68) D		
(39-54) E		
(21-38) F		
(1-20) G		
<i>Not energy efficient - higher running costs</i>		
England & Wales	EU Directive 2002/91/EC	

DIRECTIONS

CONTACT

64 Queens Road
Brighton
BN1 3XD

E: info@myhausbrighton.co.uk

T: 01273 286788

W: www.myhausbrighton.co.uk

MH-P4PP

MyHaus.