



Pembrook Mews, SW11

£2,500 Per calendar month

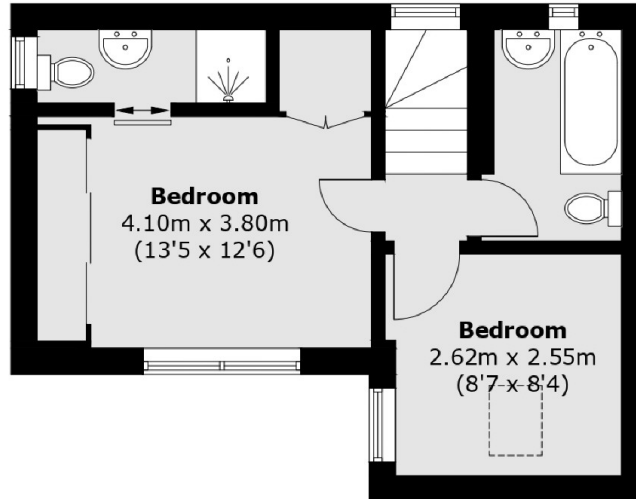
A lovely two bedroom house within the popular Pembrook Mews. The property comprises of a bright & airy reception room with adjoining modern kitchen, two double bedrooms & two bathrooms (inc en-suite). The property further benefits from communal outside space and off street parking.

Pembrook Mews is a quiet residential mews located between St. John's Hill Grove & Cologne Road. It's a short stroll away from Clapham Junction and both Clapham and Wandsworth Commons. The vast array of local amenities located on St. John's Hill and Northcote Road are also nearby.

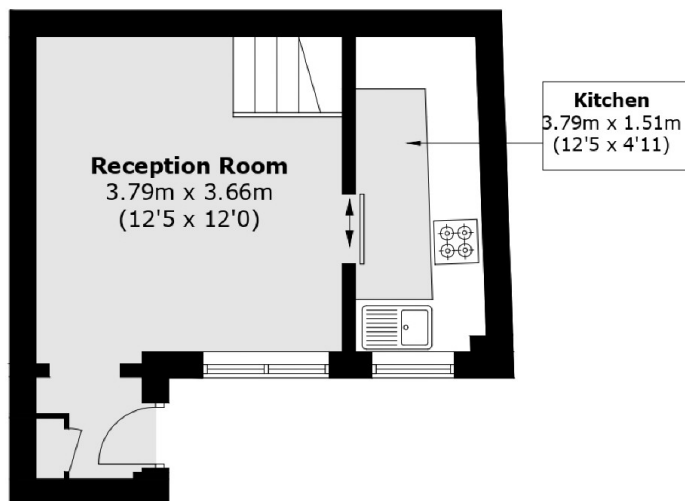
Features

- Mews House
- Private Front Door
- Two Double Bedrooms
- Off Street Parking
- Superb Location
- St. John's Road

Pembroke Mews, London, SW11



First Floor



Ground Floor

Total area (approx.): 48.5 sq. m (522.0 sq. ft)