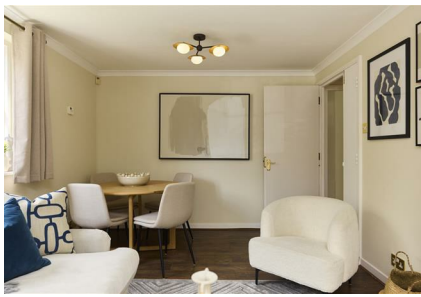


7 4 BROMPTON PARK CRESCENT, LONDON, SW6 1SP
£4,750 PER MONTH
COUNCIL TAX BAND: F

TRISPENS



SHORT LET A BRIGHT AND WELL-LAID-OUT GROUND FLOOR FLAT WITH PATIO ACCESS, SET IN A QUIET FULHAM DEVELOPMENT CLOSE TO PARKS, SHOPS, AND FULHAM BROADWAY STATION.

- LIVING ROOM

LIGHT-FILLED AND FURNISHED WITH TWO SOFAS AND A DINING TABLE. LARGE WINDOWS AND DOUBLE DOORS PROVIDE DIRECT ACCESS TO A SMALL PATIO AREA WITH GREENERY BEYOND.

- KITCHEN

A SEPARATE GALLEY-STYLE KITCHEN FITTED WITH STANDARD APPLIANCES INCLUDING AN OVEN, GAS HOB, MICROWAVE, WASHING MACHINE, AND UNDER-COUNTER FRIDGE WITH FREEZER COMPARTMENT.

- BEDROOM 1

A SPACIOUS MAIN BEDROOM WITH A KING-SIZE BED, BEDSIDE TABLES, CHEST OF DRAWERS, AND WARDROBE. THIS ROOM INCLUDES AN EN-SUITE WITH SHOWER, TOILET, AND BASIN.

- BEDROOM 2

FURNISHED WITH A DOUBLE BED, BEDSIDE TABLES, AND WARDROBE.

TIM LAWLER
02035181625
HELLO@TRISPENS.CO.UK

