



Grove Vale, SE22

£375,000

A beautifully presented one-bedroom garden maisonette situated within a modern development on Grove Vale, SE22, just moments from East Dulwich railway station.

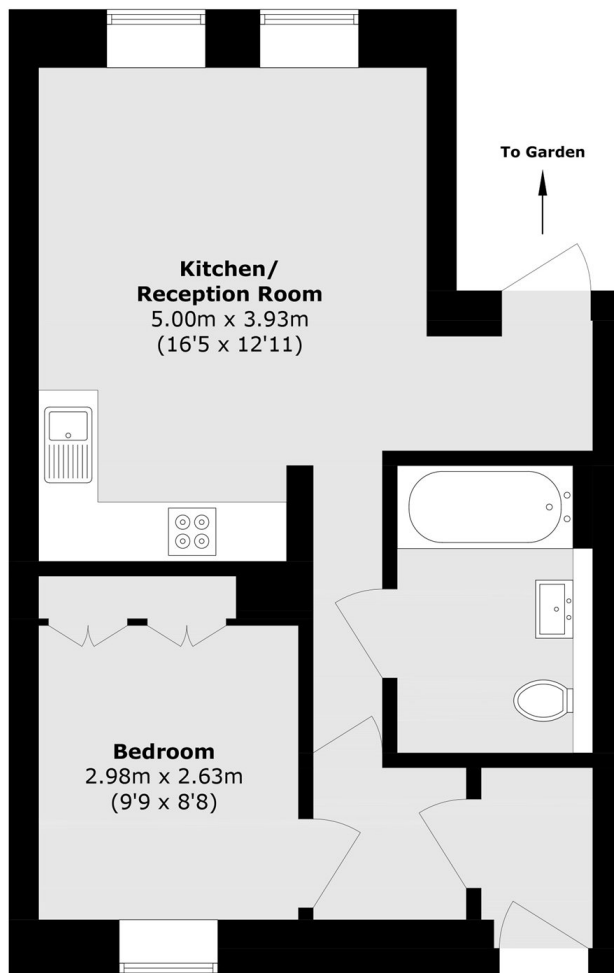
This bright and well-proportioned home offers contemporary living throughout, comprising a spacious reception room, separate modern kitchen, generous double bedroom, and a stylish bathroom. The property further benefits from direct access to a private garden, creating an ideal space for outdoor dining and entertaining.

Perfectly positioned for the vibrant amenities of East Dulwich and the popular cafés, restaurants and boutiques along Lordship Lane, while excellent transport links provide easy access into central London.

Features

- One Bedroom Maisonette
- Private Garden
- 504 Square Foot
- Moments From East Dulwich Station
- Chain Free
- Turnkey Conditions

Grove Vale, London, SE22



Ground Floor

Total area (approx.): 46.9 sq. m (504.8 sq. ft)