



## RUSSELL ROAD, W14

£650,000

Two bedrooms  
Raised ground floor  
Open plan kitchen  
High ceilings  
Bay windows  
Excellent storage

@marshandparsons  
marshandparsons.co.uk

MARSH &  
PARSONS



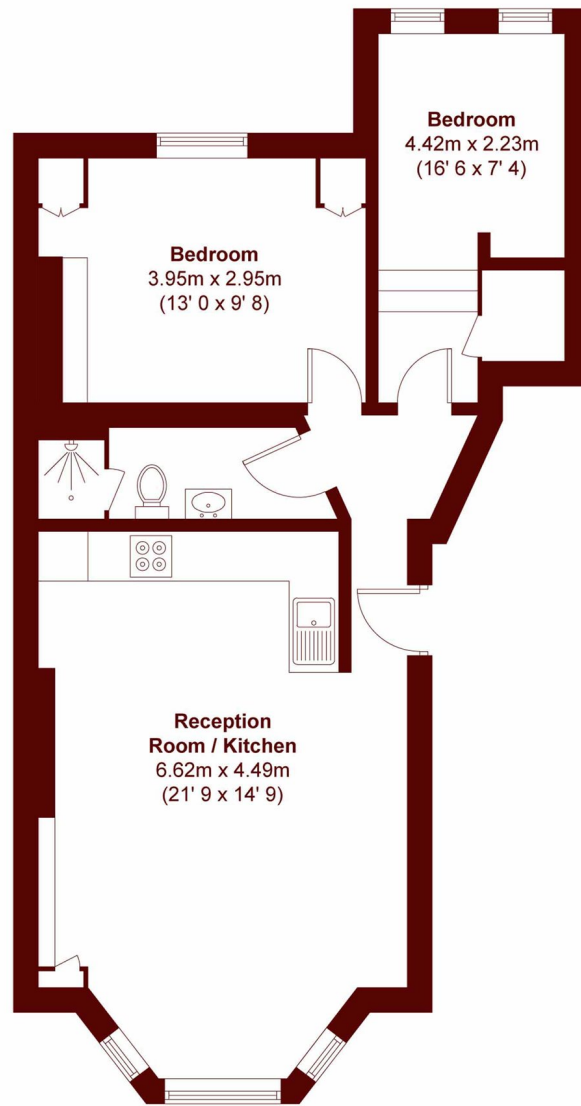
# ABOUT THE PROPERTY

Arranged on the raised ground floor of a period conversion on peaceful, tree-lined Russell Road, this well-presented two-bedroom flat offers a bright and well-balanced layout.

Russell Road is a calm residential street, well positioned for the transport links and amenities of Kensington Olympia. Holland Park, Kensington High Street and a range of local cafés and restaurants are within easy reach. The area is also set to benefit from the upcoming



# STEP INSIDE RUSSELL ROAD



**Upper Ground Floor**

APPROX. GROSS INTERNAL FLOOR AREA  
608 SQFT / 56.5 SQM

**Holland Park**  
020 7605 6890

Energy Rating: D We aim to make our particulars both accurate and reliable. However, they are not guaranteed; nor do they form part of an offer or contract. If you require clarification on any points then please contact us, especially if you're traveling some distance to view. Please note that appliances and heating systems have not been tested and therefore no warranties can be given as to their good working order

**MARSH &  
PARSONS**