



Fairham Road
Stretton Burton-On-Trent





Property Description

Burchell Edwards are delighted to market this exquisite 3 Bedroom Semi-Detached family home. The property is situated on a very desirable plot on a lovely, private road in the Stretton area. The property greets you with a low maintenance yet gorgeous area to the front of the property, including an extended driveway providing off road parking for plenty of vehicles, as well as access to the property's garage. The property itself is finished to an immaculate standard throughout and boasts a spacious downstairs comprising of: a wonderful kitchen, an extensive sized lounge as well as a downstairs bathroom finished to a modernised standard. On the first floor of the property you are greeted to a spacious landing area which provides loft access along with the property's three bedrooms, two of which being generously sized, double bedrooms. Outside to the rear is an enclosed garden which provides the perfect hosting area and a peaceful environment. The garden features a patio seating area along with a large lawn area that provides the perfect hosting area. Along with this, you will find rear access leading in to the garage for ultimate storage convenience. Viewing really is essential of this lovely, spacious property!

Lounge

Wooden flooring, central heating radiator, pendant light x2, window to front elevation, storage cupboard.

Kitchen

Tiled floor, window to rear elevation, door to rear garden, central heating radiator, pendant light, cupboards over counters, integrated oven & hobs, stainless steel sink & drainer, plumbing for washer.

Family Bathroom

Vinyl floor, pendant light, window to side elevation, central heating radiator, low level flush W/C, hand wash basin, shower over bath.

Bedroom One

Carpet flooring, pendant light, central heating radiator, window to rear elevation, integrated storage cupboard.

Bedroom Two

Carpet flooring, pendant light, central heating radiator, window to front elevation, integrated storage cupboard.

Bedroom Three

Carpet flooring, pendant light, central heating radiator, window to front elevation.

Front Garden

Extensive driveway providing off road parking for multiple vehicles, double gates open to provide additional secure parking, access through to a detached garage.

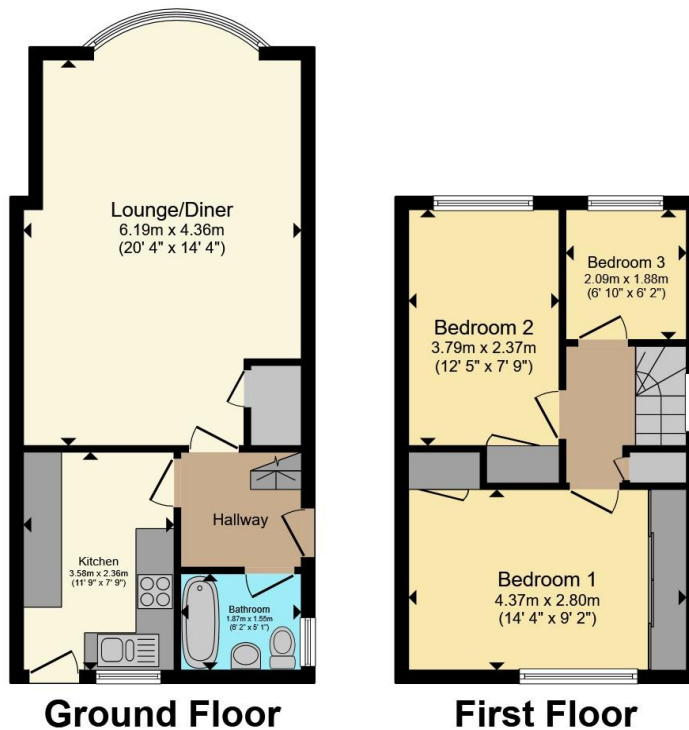
Rear Garden

Enclosed, private rear garden, fenced boundaries, large lawn area, patio seating area.









Total floor area 75.6 m² (814 sq.ft.) approx

This floor plan is for illustrative purposes only. It is not drawn to scale. Any measurements, floor areas (including any total floor area), openings and orientation are approximate. No details are guaranteed, they cannot be relied upon for any purpose and they do not form part of any agreement. No liability is taken for any error, omission or misstatement. A party must rely upon its own inspection(s). Powered by www.propertybox.io



To view this property please contact Burchell Edwards on

T 01283 530 169
E burton@burchelledwards.co.uk

Britannia House Station Street
 BURTON-ON-TRENT DE14 1AN

EPC Rating: D Council Tax
 Band: C

Tenure: Freehold

check out more properties at burchelledwards.co.uk



1. MONEY LAUNDERING REGULATIONS Intending purchasers will be asked to produce identification documentation at a later stage and we would ask for your co-operation in order that there will be no delay in agreeing the sale. 2. These particulars do not constitute part or all of an offer or contract. 3. The measurements indicated are supplied for guidance only and as such must be considered incorrect. Potential buyers are advised to recheck measurements before committing to any expense. 4. We have not tested any apparatus, equipment, fixtures, fittings or services and it is in the buyers interest to check the working condition of any appliances.

Burchell Edwards is a trading name of Connells Residential which is registered in England and Wales under company number 1489613, Registered Office is Cumbria House, 16-20 Hockliffe Street, Leighton Buzzard, Bedfordshire, LU7 1GN. VAT Registration Number is 500 2481 05.

See all our properties at www.burchelledwards.co.uk | www.rightmove.co.uk | www.zoopla.co.uk

Property Ref: BUT211526 - 0002