



# Maresfield Gardens

Hampstead, NW3

£4,000 per month  
(£923.08 per week)

Short Let. A lovely garden apartment in period conversion with direct access to the communal gardens, off street parking for 1 car in premier road in Hampstead. short walk to Belsize Park. Sole Agent.

**CHESTERTONS**



# Maresfield Gardens

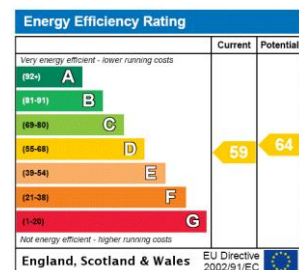
Hampstead, NW3

- Short Let. Newly Refurbished Spacious Garden Apartment
- 1 Bedroom, 1 Bathroom, Reception Room, Fully Fitted Kitchen
- Original Parquet Floors, High Ceilings, Direct Access to Communal Gardens
- Within Close Proximity to Hampstead Village, Short Walk to Swiss Cottage (Jubilee Line)



Short Let. A lovely garden apartment in a period conversion situated in this quiet residential road within close proximity to Hampstead Village and within walking distance to Belsize Park (Northern Line) and Swiss Cottage (Jubilee Line). The property benefits from plenty of storage, original parquet floors throughout and French doors leading directly to the communal gardens and off street parking for 1 car. Accommodation comprises reception room, fully fitted kitchen, large double bedroom, family bathroom. Sole Agent.

**Minimum Term:** 3 months  
**Deposit Required:** £3,692.31  
**Local Authority:** London Borough Of Camden  
**Council Tax Band:** E  
**EPC Rating:** D  
**Furnished**

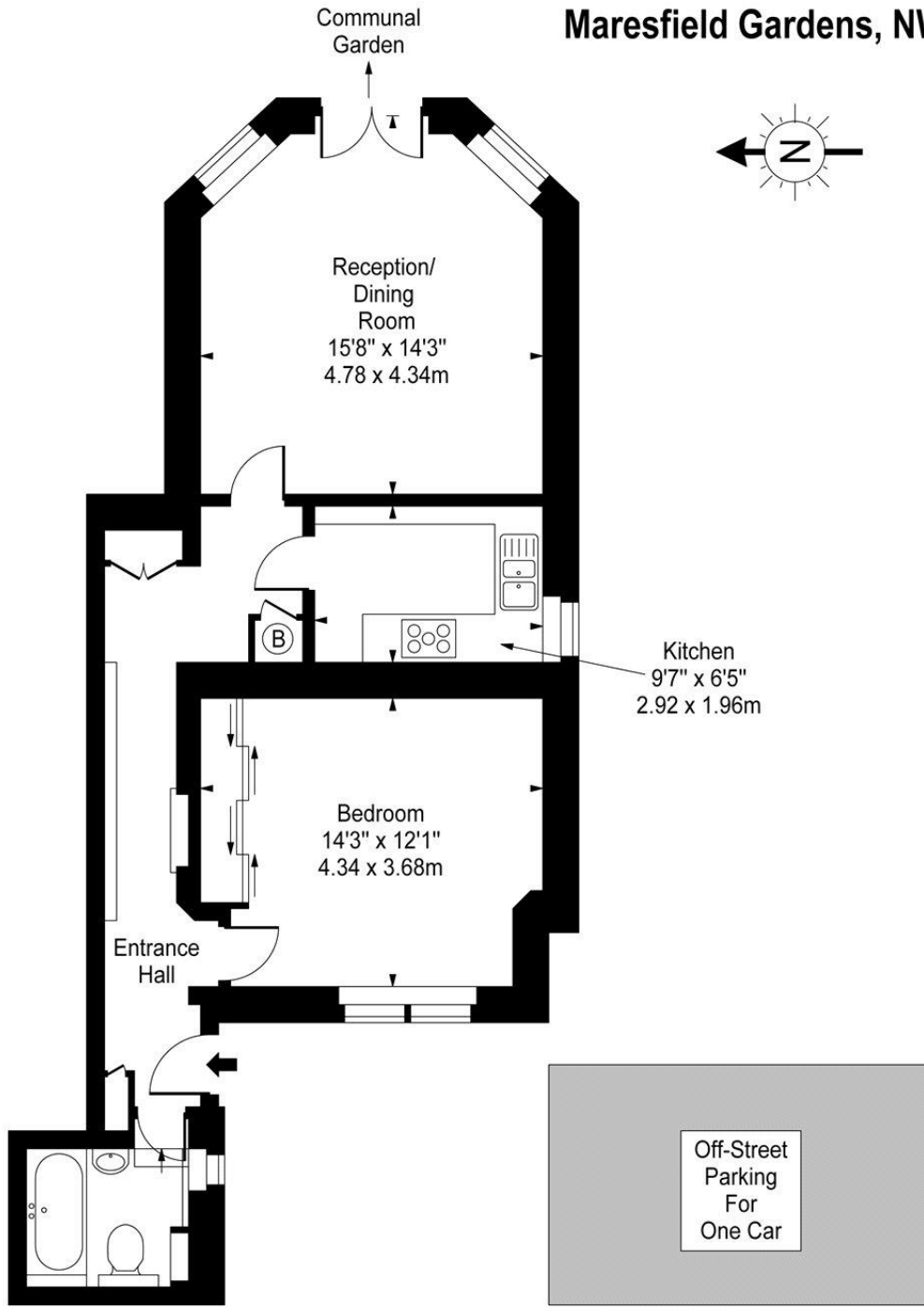


### Chestertons Hampstead Lettings

55-56 Hampstead High Street  
 Hampstead  
 London  
 NW3 1QH  
 hampsteadlettingsusers@chestertons.co.uk  
 02077941125  
 chestertons.co.uk

Additional tenant charges apply (fees apply to non-AST tenancies only)  
 Tenancy Agreement Fee: £300  
 References per Tenant/Guarantor: £60  
 Inventory check (approx. £100 – £250 inc. VAT)  
 chestertons.co.uk/property-to-rent/applicable-fees

# Maresfield Gardens, NW3



Lower Ground Floor

Approx Gross Internal Area **633 Sq Ft - 58.81 Sq M**

For Illustration Purposes Only - Not To Scale

[www.goldlens.co.uk](http://www.goldlens.co.uk)

Prepared for Chestertons

Ref. No. 002785

