



*jordan fishwick*

Apt 127 The Gate, Meadowside, 21 Aspin  
£1,595 Per Calendar Month



## The Property

Available from the start of July. Jordan Fishwick presents this wonderful Apartment in The Gate, part of the Meadowside Development just by Angel Meadows Park. This development boasts on site concierge, residents' services such as co working space, residents' lounge & Balcony, Gym and Studio, included in your rental cost.

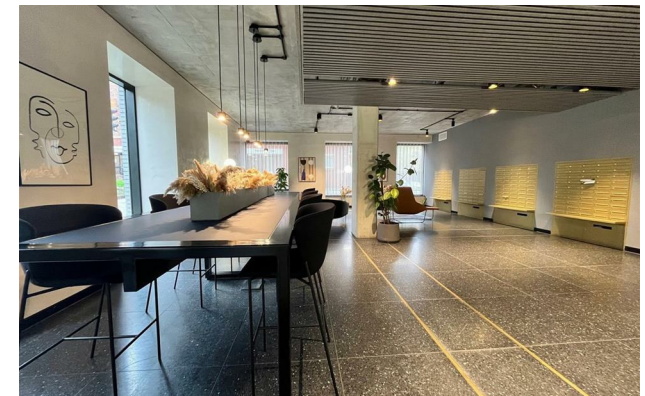
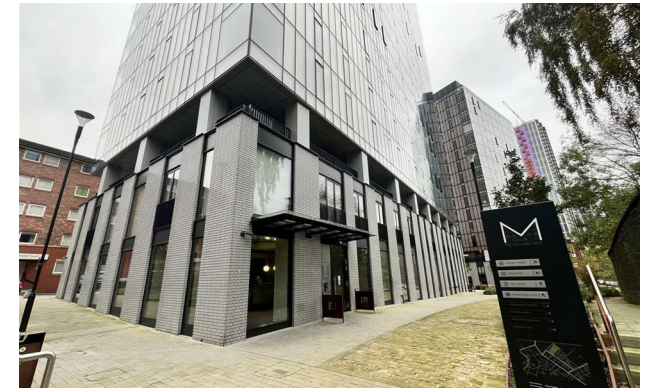
Located on the 14th Floor, Two double bedroom apartment offering an abundance of light, Comprising high spec fixtures and fittings throughout, including integrated kitchen appliances and washer drier. There are two double bedrooms, each containing built in wardrobes, and an en-suite bathroom off the master bedroom. Furnished. Council Tax Band D. EPC rating B.

REPOSIT (Nil Deposit Option) Available on this property.

**\*VIDEO/PHOTO OFFERS NOT ACCEPTED - PLEASE CALL TO BOOK A VIEWING\***

## The Gate Manchester M4 4GT

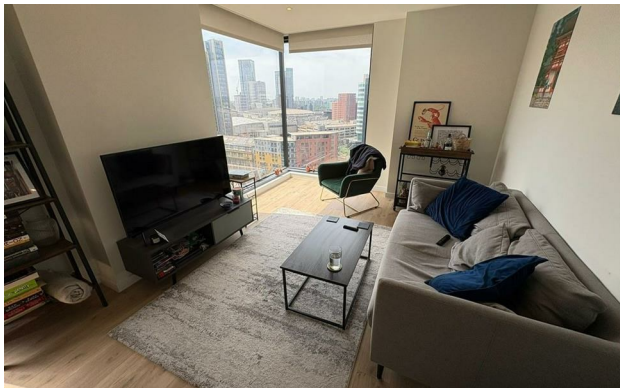
£1,595 Per Calendar Month



- Available Start of July
- 14th Floor Apartment
- Two bedrooms
- Furnished
- Gym & Concierge onsite
- Tax Band D
- EPC Rating B
- No Parking
- Close to City Centre & Victoria Train station



Energy Efficiency Rating		Current	Potential
Very energy efficient - lower running costs			
(92 plus) <b>A</b>			
(81-91) <b>B</b>		<b>82</b>	<b>82</b>
(69-80) <b>C</b>			
(55-68) <b>D</b>			
(39-54) <b>E</b>			
(21-38) <b>F</b>			
(1-20) <b>G</b>			
Not energy efficient - higher running costs			
<b>England &amp; Wales</b>		EU Directive 2002/91/EC	





These particulars are believed to be accurate but they are not guaranteed and do not form a contract. Neither Jordan Fishwick nor the vendor or lessor accept any responsibility in respect of these particulars, which are not intended to be statements or representations of fact and any intending purchaser or lessee must satisfy himself by inspection or otherwise as to the correctness of each of the statements contained in these particulars. Any floorplans on this brochure are for illustrative purposes only and are not necessarily to scale.

Offices at: Offices at Chorlton, Didsbury, Disley, Hale, Glossop, Macclesfield, Manchester Deansgate, Manchester Whitworth Street, New Mills, Sale, Wilmslow and Withington