



MATT PICKETT

exp<sup>®</sup> UK

@ matt.pickett@exp.uk.com

🌐 mattpickett.exp.uk.com

📞 07500 883 407

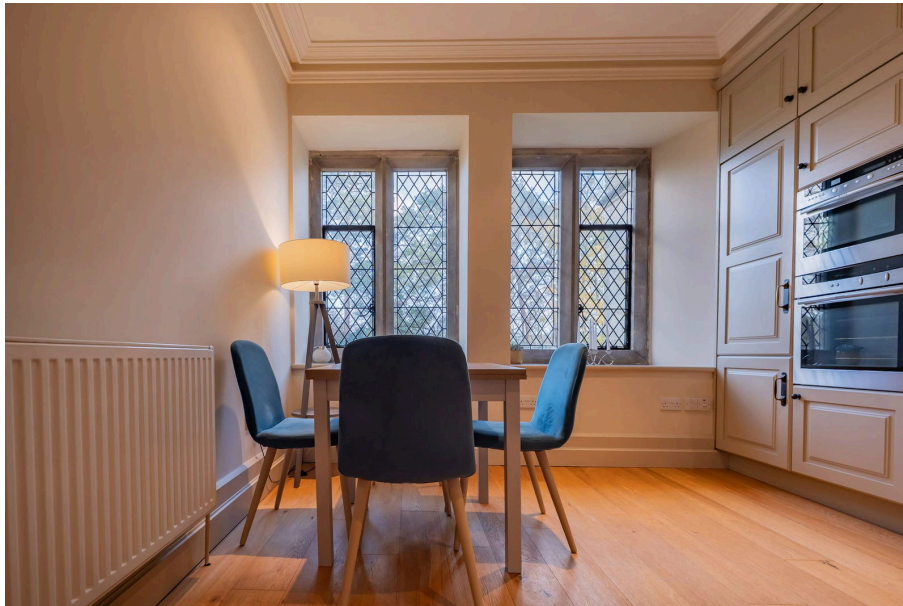
## 8, Temple Grove House, Herons Ghyll

£500,000

🛏 1 🚿 1 🛋 1



- QUOTE REF - MP1230
- Access to a heated outdoor swimming pool and hard-court tennis court
- Located in a prestigious Grade II Listed former country house
- Large, light-filled lounge with views over the gardens
- Set within 15 acres of beautifully landscaped communal grounds
- Peaceful countryside setting with scenic woodland walks and a lake
- Spacious single-level layout with generous room sizes
- Working open fire place
- Underground parking and a long sweeping driveway creating a grand arrival



A beautifully presented apartment set within the prestigious Temple Grove House estate, surrounded by 15 acres of landscaped grounds with a pool, tennis court, underground parking and woodland walks. Stunning period setting with spacious rooms and exceptional lifestyle amenities.

