

Property ref: 178504

Eldon Road, Reading, RG1 4DL

£950 PCM

HASLAM'S
Lettings



A very well presented second floor one bedroom apartment located within a Grade II listed building in the Eldon Square Conservation Area; convenient for Royal Berkshire Hospital, Reading town centre and the mainline station. Please note - this building does not have a lift.

Reading Borough Council tax band A.

Water supply: Mains

Drainage info: Mains

Electricity supply: Mains

Broadband/Mobile Info: Connections available. For an indication of specific speeds and supply of Broadband and Mobile, we advise applicants go to the Ofcom website Broadband and Mobile Coverage Checker.

- One double bedroom; En-suite shower room
- Kitchen with appliances; Living area with decorative fireplace
- Single occupants only
- Electric heating; EPC rating E
- No parking; Loft space available for light storage
- Furnished; Managed by HASLAM'S

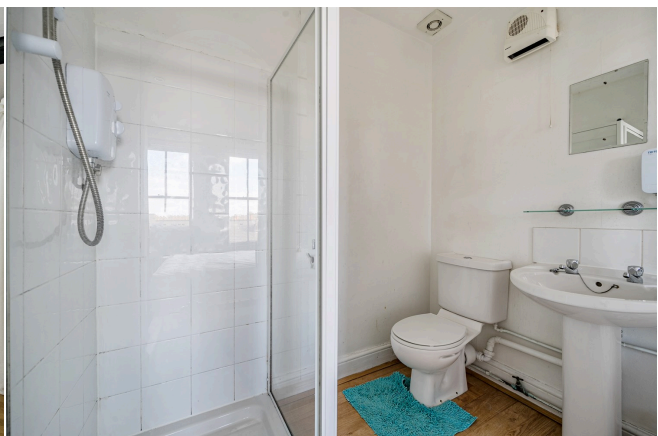
Available Now

*Fees For Assured Shorthold Tenancies: when you rent a property from us you will be required to pay a sum equivalent to one weeks' rent for a holding deposit. Upon successful application, this amount will be off set against your first months' rent. You will also be required to pay a security deposit equivalent to 5 weeks' rent which will be held and protected in line with Deposit legislation. For more information about our fees please visit: www.haslams.net
Fees for all other tenancies (Non Housing Act Tenancies / Company Lets): when you rent a property from us we will charge you a one-off fee per property. This charge is the equivalent of 15 days of the monthly rental charge (+VAT) with a minimum fee of £450 (inc.VAT) up to a maximum of £650 (inc.VAT). Other fees may apply depending on your circumstances.

0118 960 1055

lettings@haslams.net www.haslams.net

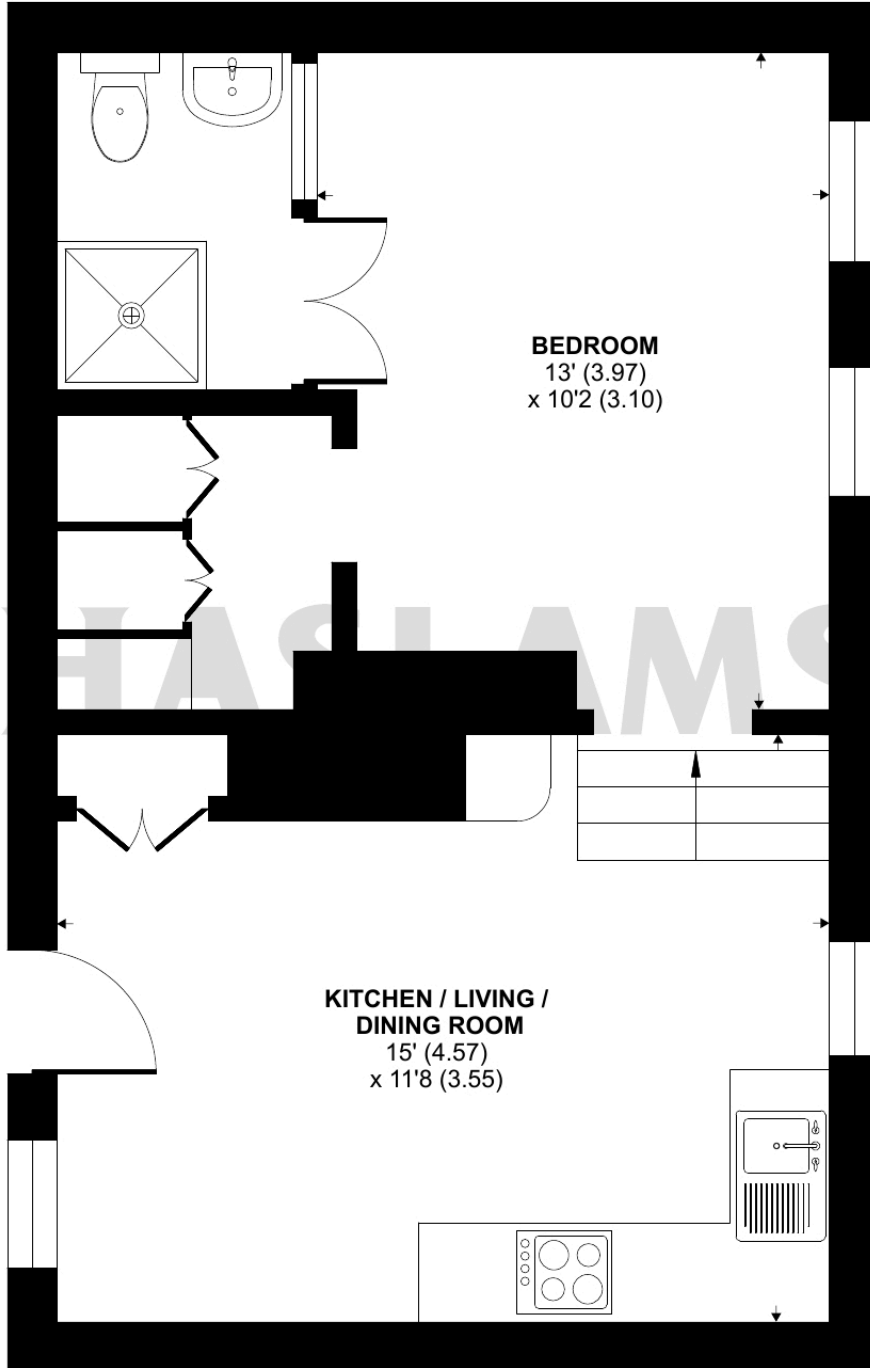
Haslams Estate Agents Ltd, 159 Friar Street, Reading, Berkshire, RG1 1HE



Eldon Road, Reading, RG1

Approximate Area = 386 sq ft / 35.8 sq m

For identification only - Not to scale



BEDROOM
13' (3.97)
x 10'2 (3.10)

**KITCHEN / LIVING /
DINING ROOM**
15' (4.57)
x 11'8 (3.55)

SECOND FLOOR



Floor plan produced in accordance with RICS Property Measurement 2nd Edition, Incorporating International Property Measurement Standards (IPMS2 Residential). © n̄checom 2026. Produced for Haslams. REF: 1437315