



## 7 Dorset Close

Ipswich, Suffolk, IP4

Offers In Excess Of £400,000

We are delighted to present for sale this extended three-bedroom, double bay-fronted semi-detached home, ideally situated in a highly sought-after location in the North East of Ipswich.





# Property Features

---

- Three bedrooms
- Cul de sac location
- Private rear garden
- Open plan kitchen dining room

## Full Description

---

### DESCRIPTION

We are delighted to present for sale this extended three-bedroom, double bay-fronted semi-detached home, ideally situated in a highly sought-after location in the North East of Ipswich.

In the valuer's opinion, this beautifully renovated property has been finished to an exceptional standard, seamlessly blending modern design with charming character features. Light-filled and spacious throughout, the home offers versatile living accommodation that is perfect for family life.

On the ground floor, you'll find a welcoming living room with a wood-burning stove, a stunning open-plan kitchen/dining area with bi-folding doors opening onto the garden, a utility area, and an additional open-plan reception/playroom – ideal for modern family living. A convenient downstairs

cloakroom completes the ground floor.

Upstairs, there are three well-proportioned bedrooms and a stylish family bathroom. The home benefits from gas central heating and double glazing throughout.

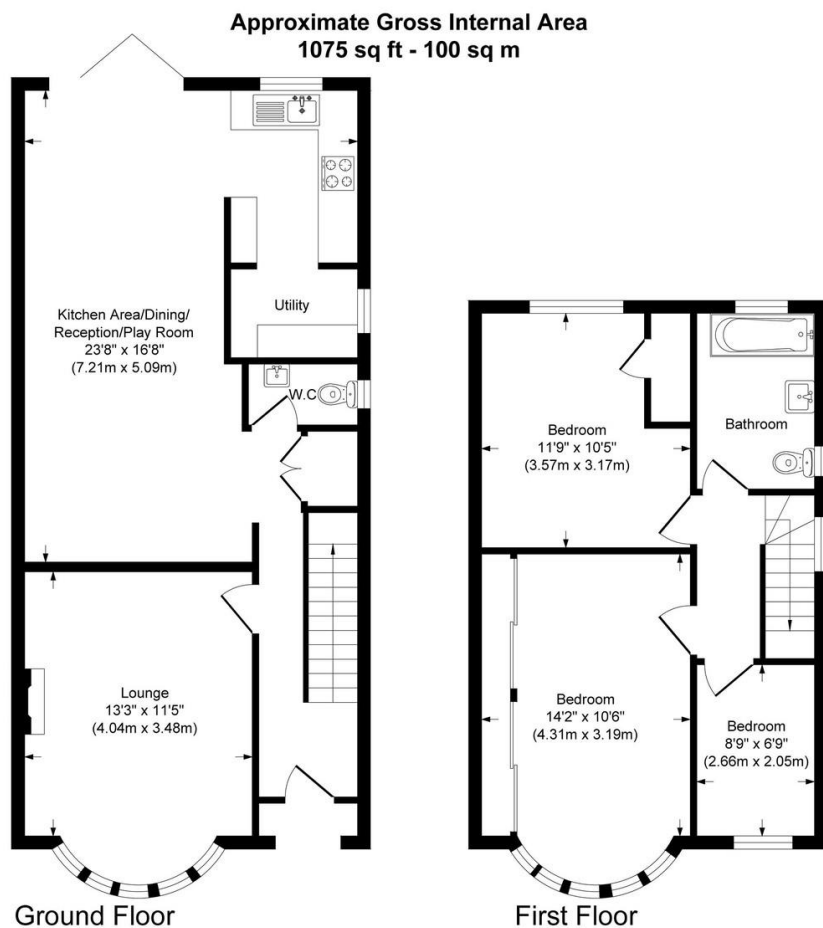
Externally, the property boasts a generously sized enclosed rear garden (approximately 10m x 8m), perfect for entertaining or relaxing, along with off-road parking for up to three vehicles at the front.

Early viewing is highly recommended to fully appreciate everything this exceptional property has to offer.

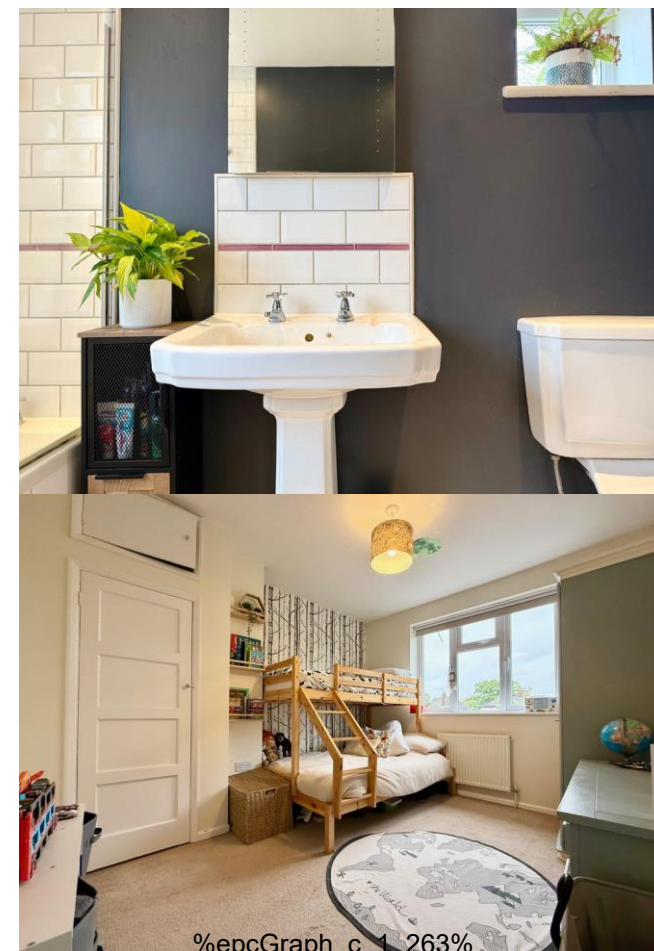








Although every attempt has been made to ensure accuracy, all measurements are approximate.  
This floorplan is for illustrative purposes only and not to scale.  
Measured in accordance with RICS Standards.



%epcGraph\_c\_1\_263%

Jackson & Co  
43 Basepoint  
70-72 The Havens  
Ransomes Euro Park  
IP3 9BF

[www.jackson-ps.co.uk](http://www.jackson-ps.co.uk)  
[contact@jackson-ps.co.uk](mailto:contact@jackson-ps.co.uk)  
01473 722981

Agents Note: Whilst every care has been taken to prepare these particulars, they are for guidance purposes only. All measurements are approximate are for general guidance purposes only and whilst every care has been taken to ensure their accuracy, they should not be relied upon and potential buyers/tenants are advised to recheck the measurements