



**Green Road, Rhos on Sea**

Colwyn Bay

Offers Over  
**£650,000**

**Bedrooms: 2 | Bathrooms: 1 | Receptions: 3**

Perfectly positioned just moments from the beautiful beach and promenade of Rhos-on-Sea, this exceptional detached bungalow has been thoughtfully designed to create a home of comfort, elegance and effortless coastal living.

From the moment you step inside, the quality is immediately apparent. Immaculately presented throughout, every element has been carefully considered, with engineered oak flooring, solid oak internal doors and innovative Thermaskirt heating combining timeless style with modern efficiency. The attention to detail is truly outstanding, creating a home that is as practical as it is beautiful.

At the heart of the property is a stunning designer kitchen, complete with integrated AEG appliances and a separate utility room, flowing effortlessly into versatile living spaces. Three reception rooms provide flexibility for entertaining, relaxing or working from home, allowing the property to adapt perfectly to your lifestyle. The accommodation offers two well-proportioned ground floor bedrooms, while a superb loft conversion spans the entire length of the bungalow. Currently arranged as a luxurious bedroom suite with an impressive dressing room, this fantastic additional space has been completed under permitted development and offers endless possibilities for future owners.

Outside, the lifestyle continues. Beautifully landscaped gardens have been designed to be enjoyed throughout the seasons, with a stylish pergola, hot tub and summer house creating the perfect setting for entertaining family and friends or simply unwinding in complete privacy. A generous driveway provides parking for three to four vehicles, complemented by a separate garage.

This is a home that doesn't simply offer somewhere to live, it offers a lifestyle. A place where every day feels a little more relaxed, where the sea is always close by, and where the next chapter can be enjoyed at exactly the pace you choose.

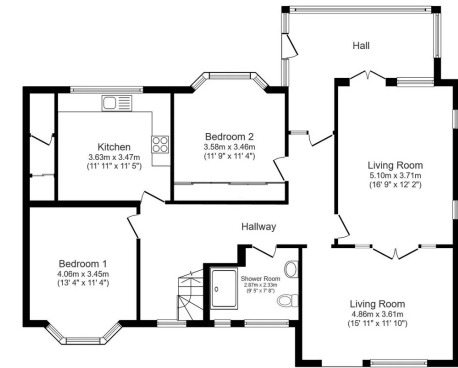




- Detached 2/3 bedroom bungalow just moments from the beach and promenade
- Immaculately presented throughout with exceptional attention to detail
- Designer kitchen with integrated AEG appliances and separate utility room
- Engineered oak flooring, solid oak doors and energy-efficient Thermaskirt heating
- Three versatile reception rooms offering flexible living and entertaining space
- Full-width loft conversion providing a luxurious bedroom suite and dressing room (completed under permitted development)
- Beautifully landscaped private gardens with pergola, hot tub and summer house
- Driveway providing off-road parking for 3-4 vehicles plus separate garage
- Prestigious coastal location in the heart of Rhos-on-Sea, close to local amenities, cafés and the seafront
- A truly turnkey home offering luxury, space and an enviable coastal lifestyle



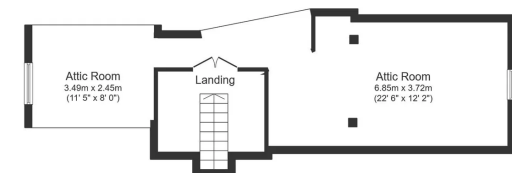




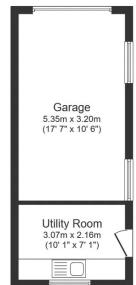
Ground Floor

Total floor area: 119.8 sq.m. (1,289 sq.ft.)

This floor plan is for illustrative purposes only. It is not drawn to scale. Any measurements, floor areas (including any total floor area), openings and orientations are approximate. No details are guaranteed, they cannot be relied upon for any purpose and do not form any part of any agreement. No liability is taken for any error, omission or misstatement. A party must rely upon its own inspection(s). Powered by [www.propertybox.io](http://www.propertybox.io)



Floor Plan



Outbuilding

Total floor area: 67.9 sq.m. (731 sq.ft.)

This floor plan is for illustrative purposes only. It is not drawn to scale. Any measurements, floor areas (including any total floor area), openings and orientations are approximate. No details are guaranteed, they cannot be relied upon for any purpose and do not form any part of any agreement. No liability is taken for any error, omission or misstatement. A party must rely upon its own inspection(s). Powered by [www.propertybox.io](http://www.propertybox.io)







**Signature Property Partners - Kelly Young**

**82 Water Lane Wilmslow SK9 5BB**

**07704 486 061**

[kelly.young@signaturepp.co.uk](mailto:kelly.young@signaturepp.co.uk)

<https://signaturepropertypartners.co.uk/>