

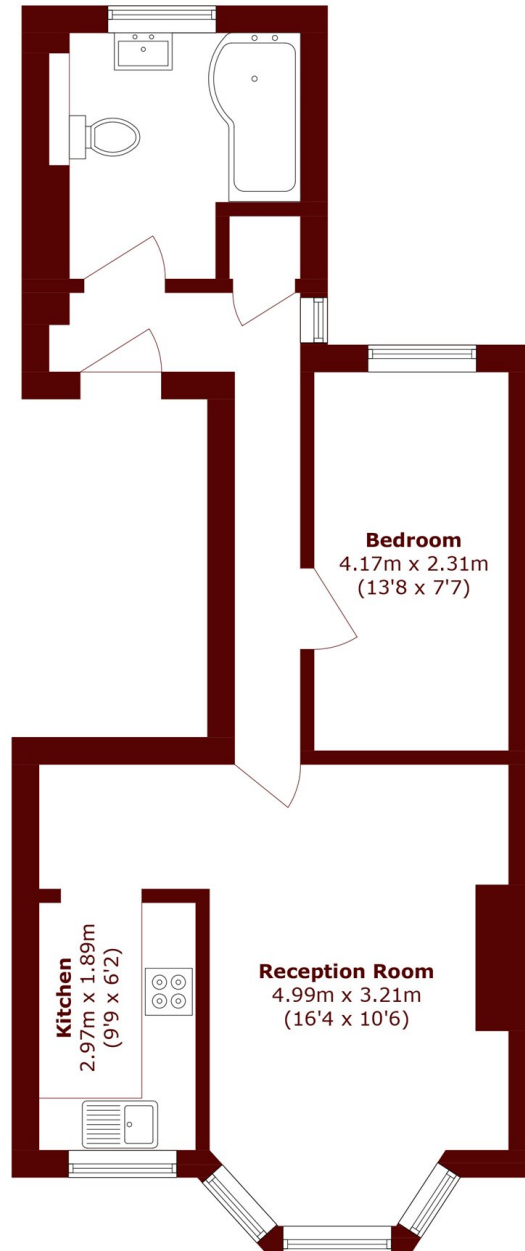


Westcroft Square, W6

£450,000



- Separate Kitchen/Reception
- Good Transport Links
- Period Conversion
- Share of Freehold
- Spacious and Bright
- High Ceilings



Total area (approx.): 47.8 sq. m (514.5 sq. ft)

Marsh & Parsons Askew Road

120 Askew Road, London,
W12 9BL
020 8102 0123