

## Yoxall Road, Shirley, Solihull, B90 3RW

Offers Over £485,000

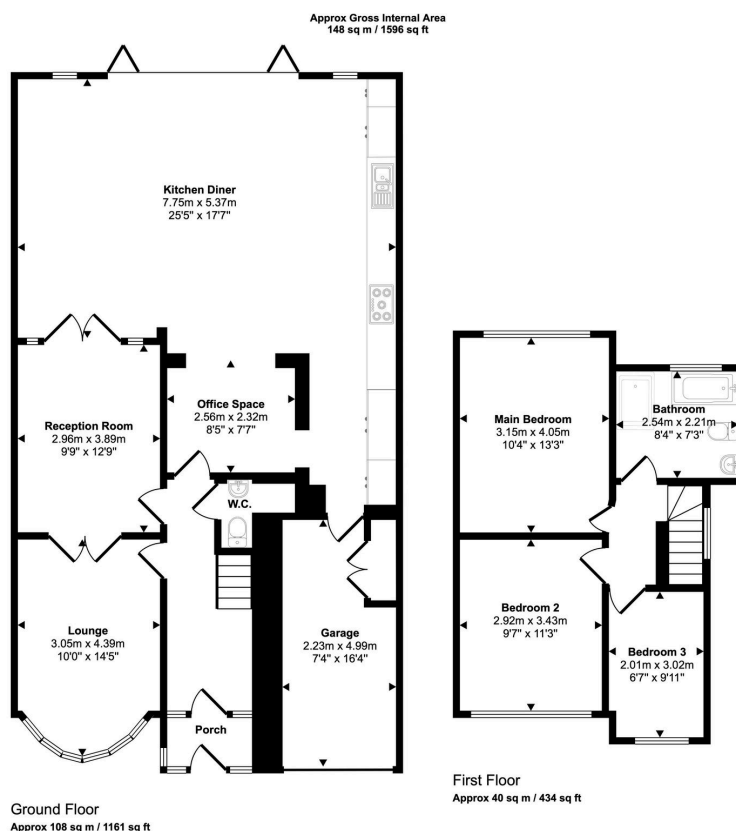
3 1 2



A beautifully presented three bedroom family home situated in this desirable location on Yoxall Road, Shirley, Solihull. Viewings Highly Recommended

## Key Features

- Beautifully presented three-bedroom family home
- Single garage with new garage door
- Underfloor heating to the extended kitchen area
- Induction hob with integrated extractor
- New guttering, soffits and fascias
- Large off-street driveway
- Stunning rear extension with aluminium bi-fold doors and rooflights
- High-quality Porcelanosa floor tiles and marble splashback
- New double-glazed windows throughout
- Hard-wired Ring CCTV and lighting system



This floorplan is only for illustrative purposes and is not to scale. Measurements of rooms, doors, windows, and any items are approximate and no responsibility is taken for any error, omission or mis-statement. Icons of items such as bathroom suites are representations only and may not look like the real items. Made with Made Shappy 360.