



Highbury Grange, N5

£400,000

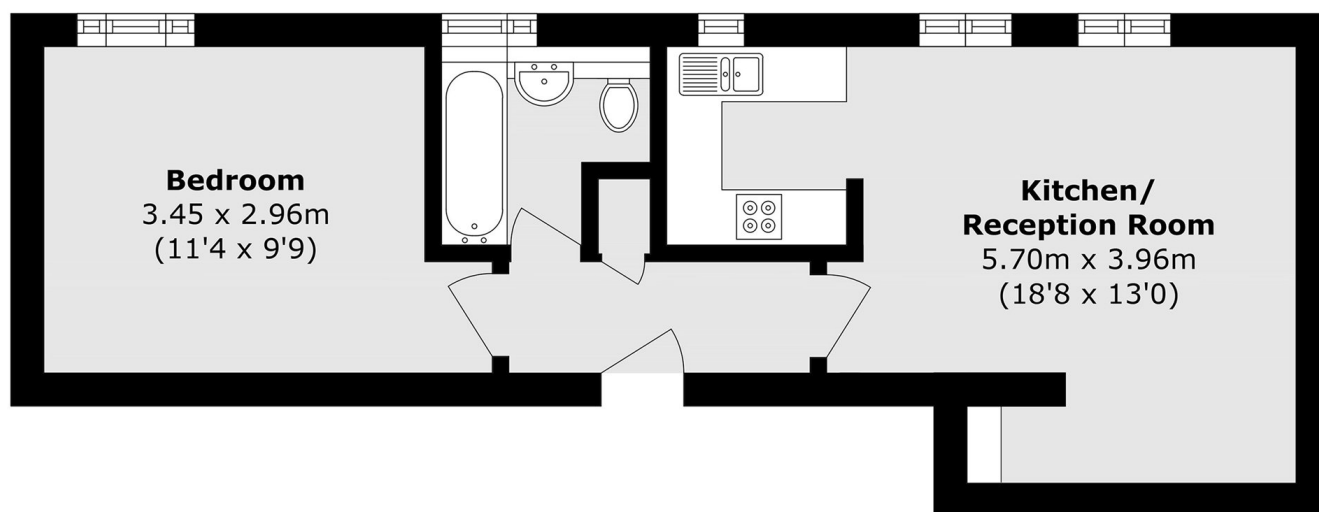
This beautifully presented one-bedroom flat is ideally located just moments from Highbury Fields. The apartment features a spacious lounge leading through to a well-appointed kitchen, a generous double bedroom with large fitted wardrobes, and a contemporary bathroom.

Ideally located close to Highbury & Islington station (Victoria line, National Rail and Overground) and Upper Street's shops and restaurants. Highbury Barn is nearby, with Arsenal station (Piccadilly line) just over half a mile away and frequent bus links along Highbury Grove and Blackstock Road.

Features

- One Bedroom
- Close to Highbury Fields
- Sash Windows
- Chain Free

Highbury Grange, London, N5



Total area (approx.): 36.5 sq. m (392.9 sq. ft)