



Royston Road, Byfleet, KT14

Offers Over £315,000

🛏️ 2 🚿 1 🚗 1



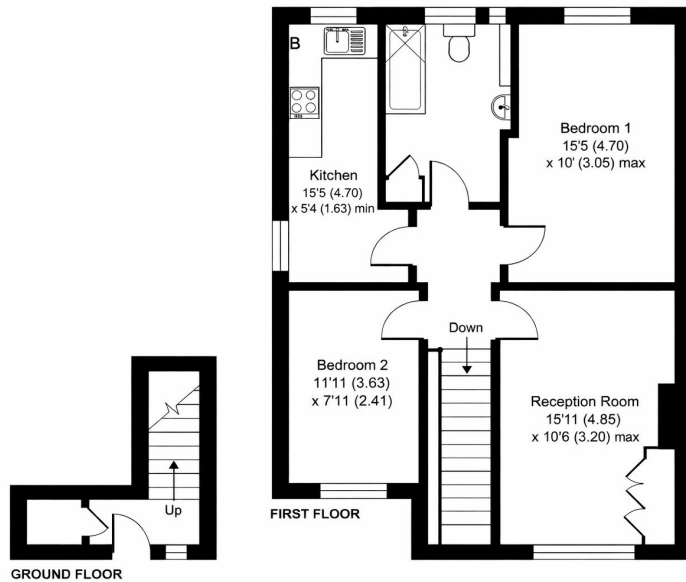
A beautifully presented two-bedroom first-floor maisonette, ideally positioned within a sought-after cul-de-sac in the heart of Byfleet Village. This charming home enjoys a prime location within easy walking distance of Byfleet & New Haw mainline station, as well as a variety of local shops and highly regarded schools.

Internally, the property offers generously proportioned and well-maintained living space throughout. Accommodation comprises a spacious and light-filled reception room, a contemporary fitted kitchen, two well-sized double bedrooms, and a stylish family bathroom.

Externally, the property benefits from off-street parking and a private garden, perfect for relaxing or entertaining, with convenient access through to a garage.



Approximate Area = 763 sq ft / 70.8 sq m



- Beautifully presented two-bedroom first-floor maisonette
- Within walking distance of Byfleet & New Haw mainline station
- Spacious and bright reception room
- Two generous double bedrooms
- Private garden ideal for relaxing or entertaining
- Located in a sought-after cul-de-sac in Byfleet Village
- Close to local shops, amenities, and well-regarded schools
- Modern, well-equipped fitted kitchen
- Stylish family bathroom
- Off-street parking with access to a garage

