

## St. Mary Graces Court, E1

 2  1  1 

£519 Per week

- Two Bedroom
- Spacious Reception
- Private Balcony
- Modern Bathroom
- Secured Development
- Tower Hill



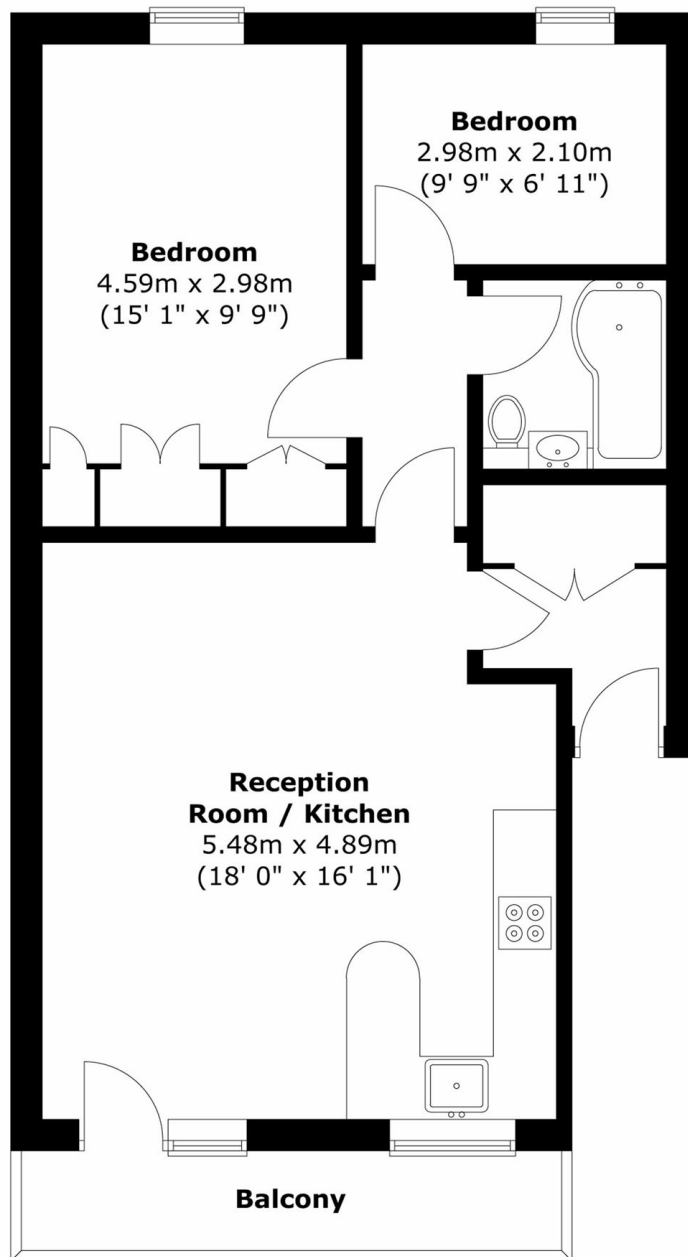


Spacious and bright two bedroom apartment in this popular secured development moments away from Tower Hill Station. The property comprises of two bedrooms, a spacious reception room with open plan kitchen, private balcony, and modern bathroom.

Ideally located near Tower Hill and Aldgate Stations for an easy commute to the City, London Bridge, Canary Wharf or Shoreditch. A few minutes walk only from St Katharine Docks offering with a wide selection of pubs, bars, restaurants and cafes nearby. Walking distance to the City.







Total area (approx.) : 57.3 sq. m (617 sq. ft)  
 Total balcony area (approx.) : 4.9 sq. m (53 sq. ft)

35A Wapping High Street,  
 London, E1W 1NR  
 020 7702 3456  
[ea2group.com](http://ea2group.com)