



£499,800

*At a glance...*



4



2



2

EPC

C

COUNCIL  
TAX

E

**holland  
& odam**

10 Osmond Drive  
Wells  
Somerset  
BA5 2JX

**TO VIEW**

55, High Street, Wells,  
Somerset BA5 2AE

01749 671020

[wells@hollandandodam.co.uk](mailto:wells@hollandandodam.co.uk)



## Directions

From Wells take the A39 towards Glastonbury. Pass the Police Station and take the next turning right into Jocelyn Drive. Take the second turning right into Osmond Drive and the property can be found on the right hand side.

## Services

Mains electricity, gas, water and drainage are connected. Gas central heating system.

## Local Authority

Somerset Council  
0300 1232224  
[somerset.gov.uk](http://somerset.gov.uk)

## Tenure

Freehold



## Location

Wells is the smallest city in England and offers a vibrant high street with a variety of independent shops and restaurants as well as a twice weekly market and a choice of supermarkets including Waitrose. Amenities include a leisure centre, independent cinema and a theatre. Bristol and Bath lie c.22 miles to the north and north-east respectively with mainline train stations to London at Castle Cary (c.11 miles) as well as Bristol and Bath. Bristol International Airport is c.15 miles to the north-west. Of particular note is the variety of well-regarded schools in both the state and private sectors in Wells and the surrounding area.

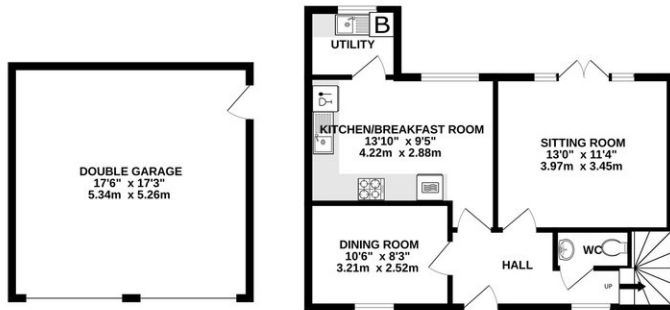
## Insight

A well presented four bedroom semi-detached property with double garage and driveway parking. Coming to the market for the first time since being built in 2001. This home has been well maintained and improved by the present owners and is now being offered with no onward chain.

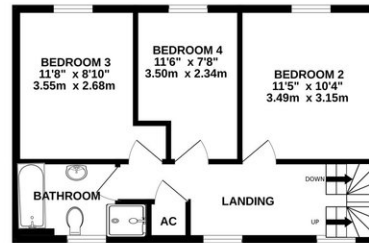
- Generous kitchen with plenty of room for a dining table and chairs. Good amount of wall and base units with an integrated fridge freezer, double oven and dishwasher.
- Bright sitting room with French doors leading out to the rear garden. There is also a second reception room presently used as an office.
- Utility room with a sink and space for a washing machine and tumble dryer. There is also a back door leading out to the well presented rear garden.
- The principle bedroom is double and has an en suite with separate bath and shower. There is also a dressing room with ample storage cupboards.
- Two further double bedrooms and a good size single room.
- New windows installed September 2024.
- Spacious double garage with light and power along with gated driveway parking for a further two - four vehicles.
- Side door from the garden into the garage and also a gate from the driveway into the enclosed rear garden



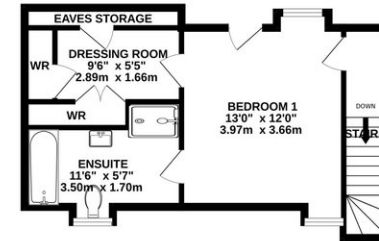
GROUND FLOOR  
784 sq.ft. (72.8 sq.m.) approx.



1ST FLOOR  
451 sq.ft. (41.9 sq.m.) approx.



2ND FLOOR  
387 sq.ft. (35.9 sq.m.) approx.



TOTAL FLOOR AREA : 1622 sq.ft. (150.7 sq.m.) approx.

Whilst every attempt has been made to ensure the accuracy of the floorplan contained here, measurements of doors, windows, rooms and any other items are approximate and no responsibility is taken for any error, omission or mis-statement. This plan is for illustrative purposes only and should be used as such by any prospective purchaser. The services, systems and appliances shown have not been tested and no guarantee as to their operability or efficiency can be given.  
Made with Metropix ©2025

### DISCLAIMER

CONSUMER PROTECTION FROM UNFAIR TRADING REGULATIONS 2008. The Agent has not tested any apparatus, equipment, fixtures and fittings or services and so cannot verify that they are in working order or fit for the purpose. A Buyer is advised to obtain verification from their Solicitor or Surveyor. References to the Tenure of a Property are based on information supplied by the Seller. The Agent has not had sight of the

title documents. A Buyer is advised to obtain verification from their Solicitor. Items shown in photographs are not included unless specifically mentioned within the sales particulars. They may however be available by separate negotiation. Buyers must check the availability of any property and make an appointment to view before embarking on any journey to see a property.

DATA PROTECTION. Personal information provided by customers wishing to receive information and/or services from the estate agent and the Property Sharing Experts (of which it is a member) for the purpose of providing services associated with the business of which it is a member) for the purpose of providing services associated with the business of an estate agent but specifically excluding mailing or promotions by a third party. If you do not wish your personal information to be used for any of these purposes, please notify us.