



**POOLE  
TOWNSEND**

# Ireleth, Askam in Furness

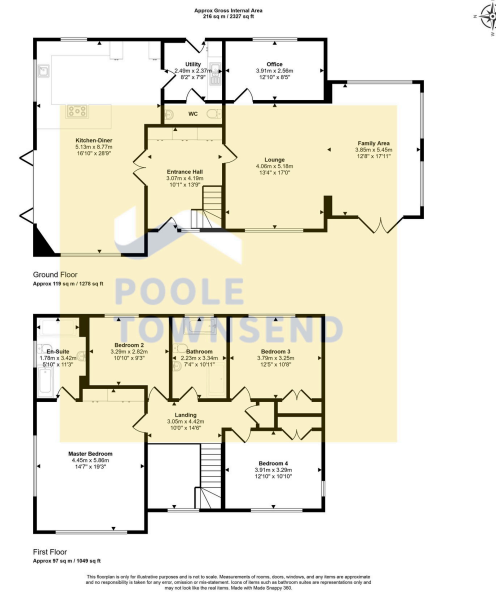
£900,000

🛏️ 4 🚿 2 🚗 3

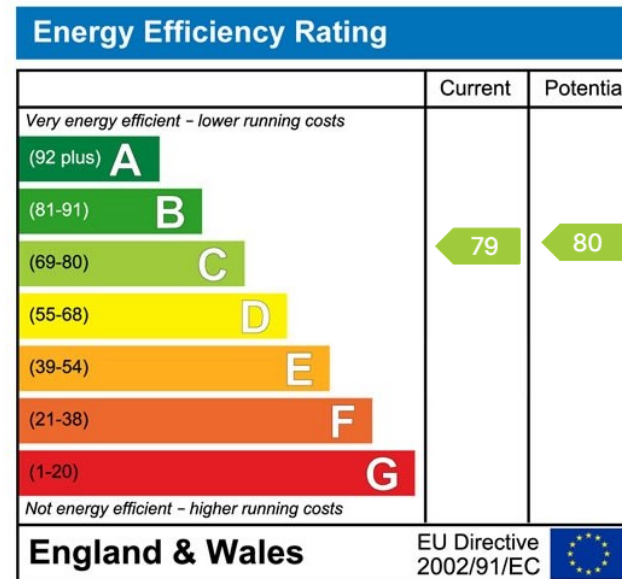


- Fabulous detached family home
- Large kitchen / dining space with utility room
- Master bedroom with ensuite
- Full Fibre broadband & Ethernet network
- Large driveway for multiple cars
- Bright open plan living space
- Spectacular sunsets
- Panoramic views across open countryside to the sea & Lakeland fells
- Freehold
- Ample outdoor space ideal for entertaining





This stunning, individually designed and built home by Neil Price sits on the edge of Ireleth, enjoying breathtaking panoramic views across farmland to the Duddon Estuary and distant Lake District mountains. Finished to a high standard, the spacious accommodation is both stylish and versatile. A striking double-height hallway with galleried landing leads to a superb kitchen with dining area, a multi-aspect lounge with games space, and a separate office. There are four generous double bedrooms, including a principal with en-suite, plus a contemporary four-piece family bathroom, ground floor WC, and utility room. Externally, the property boasts extensive land, outbuildings, a large container, and ample parking, all set within a beautiful rural backdrop, with LPG central heating and solar PV adding efficiency.



Visit us at  
[www.pooletownsend.co.uk](http://www.pooletownsend.co.uk)  
[enquiries@pooletownsend.co.uk](mailto:enquiries@pooletownsend.co.uk)

We are open  
 Monday – Friday 9.00 – 5.00  
 Saturday 9.00 – 1.00

Barrow 01229 811811  
 Ulverston 01229 588111  
 Grange 015395 33316  
 Kendal 01539 734455  
 Milnthorpe 015395 62044