



## Sloane Avenue, SW3

### £495,000

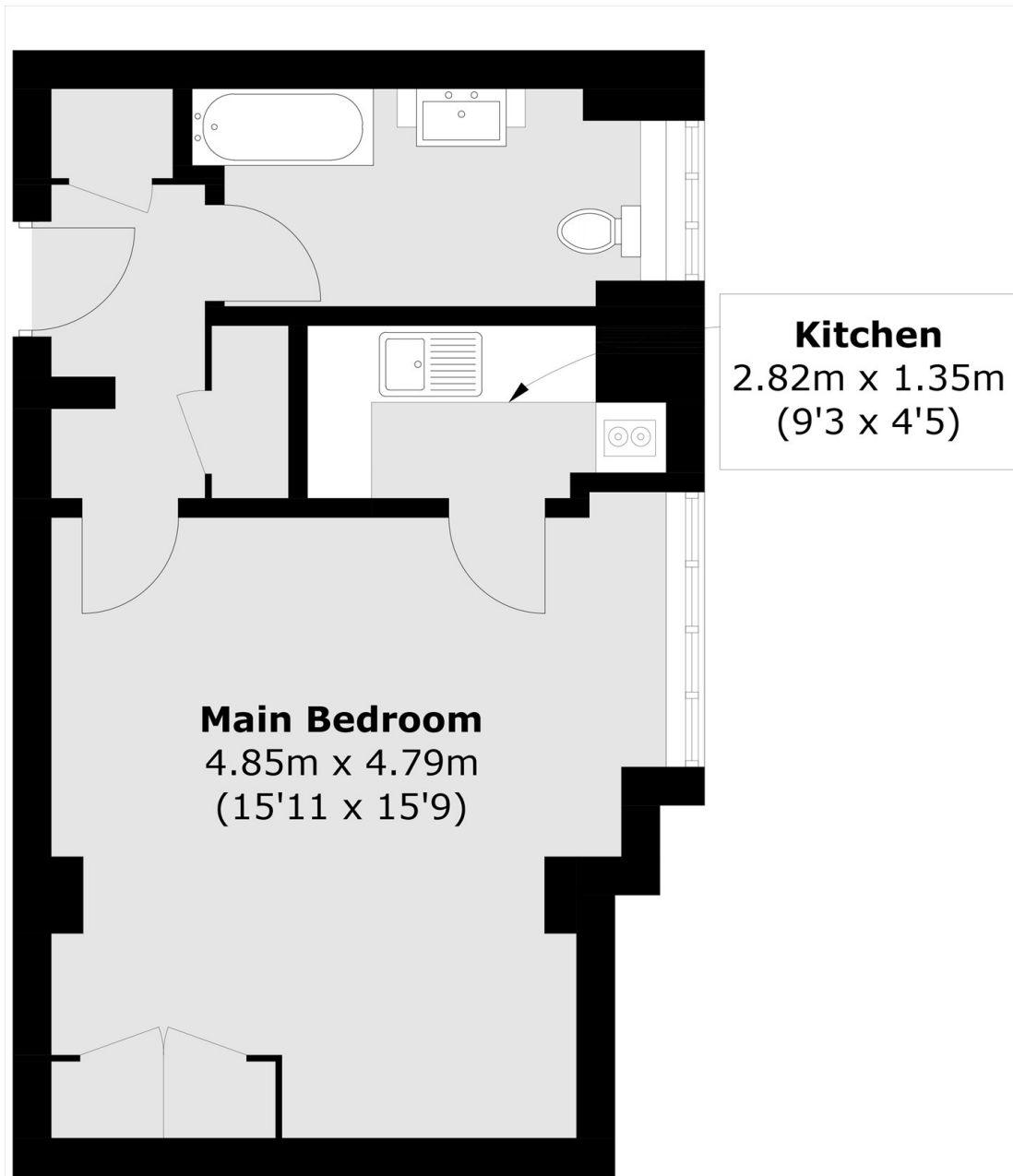
Set on the eighth floor within a portered building, this studio apartment would work very well as a London base or rental investment. This property is in good condition although would now benefit from a light refurbishment.

Nell Gwynn House is a popular, portered block located on Sloane Avenue which is in close proximity to Sloane Square, South Kensington and the King's Road.

### Features

- Share of Freehold
- Studio Apartment
- Lift
- Porter
- Popular Location
- Ideal Rental Investment

# Sloane Avenue, London, SW3



## Eighth Floor

Total area (approx.): 37.7 sq. m (405.8 sq. ft)

**Dexters**

Chelsea and Belgravia  
45 Sloane Avenue  
London  
SW3 3DH  
Sales  
020 7590 9510

Energy Rating: . We aim to make our particulars both accurate and reliable. However they are not guaranteed; nor do they form part of an offer or contract. If you require clarification on any points then please contact us, especially if you're traveling some distance to view. Please note that appliances and heating systems have not been tested and therefore no warranties can be given as to their good working order.

 **RICS** | Regulated  
Estate Agent  
and Letting Agent

dexters.co.uk