

## Prairie Street, SW8

£2,700 Per calendar month

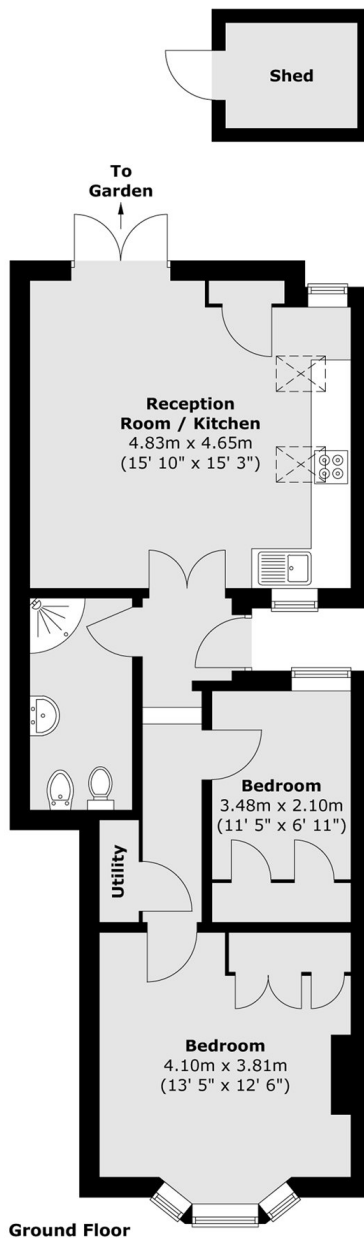
A beautifully presented first floor flat within a Victorian Conversion. It has two double bedrooms, a recently refurbished kitchen and bathroom, spacious reception room with lots of natural light and high ceilings.

Battersea Rise is conveniently located close to the vibrant Northcote Road known for its vast array of bars, pubs and restaurants. It is also moments away from both Wandsworth and Clapham Common with Clapham Junction station also nearby.

### Features

- Two Double Bedrooms
- Victorian Conversion
- Refurbished Kitchen
- Plenty Of Storage
- Ground Floor Flat
- Close To Transport

# Prairie Street, London, SW8



Total area (approx.) : 57.8 sq. m (622 sq. ft)