



Foundry Close Melksham SN12 8FD

- Garage
- En-Suite
- Ground Floor
- Two Bedrooms

£150,000 Leasehold





Hall

Door from entrance, storage cupboard, radiator and doors to Living Room, Bedrooms and Bathroom.

Living Room / Kitchen/Diner

16'4" x 14'10"

Open plan Living room / Kitchen/Diner with two windows to side elevation and two radiators.

Bedroom One

14'4" x 10'11"

Windows to front and side elevation fitted wardrobe, radiator and door to En-suite.

En-suite

Fitted with three piece suite comprising shower enclosure, wash hand basin and WC with radiator.

Bedroom Two

16'4" x 9'3"

Window to side elevation, radiator and storage cupboard.



Bathroom

Fitted with three piece suite comprising bath with hand shower attachment, wash hand basin and WC, window to rear elevation and radiator.

Outside

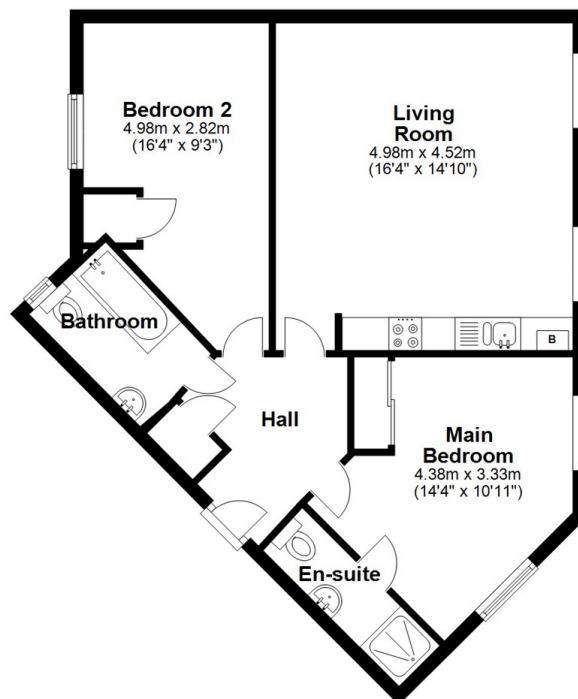
Garage in a block with up and over door.



Local Authority **Wiltshire**
Council Tax Band **A**
EPC Rating **B**

Ground Floor

Approx. 60.7 sq. metres (653.0 sq. feet)



Total area: approx. 60.7 sq. metres (653.0 sq. feet)



KINGSTONS

Melksham Office

11 High Street, Melksham,
Wiltshire, SN12 6JR

Contact

01225709115
sales@kingstons.biz
www.kingstons.biz

Agents Note: Whilst every care has been taken to prepare these particulars, they are for guidance purposes only. All measurements are approximate and for general guidance purposes only and whilst every care has been taken to ensure accuracy, they should not be relied upon and potential buyers/tenants are advised to recheck the measurements.