

PER MONTH

**£2,400 Per Month**

**Roman Road**

London, E2 0HJ

A two-bedroom apartment set within a small traditional purpose built block overlooking Bethnal Green Gardens.

Spread over 2 floors is this lovely, well-kept property featuring a bright reception room with direct views over the park. It has a modern separate kitchen and ample storage. The first floor has two double bedrooms and a contemporary fitted bathroom with clean white brick tiling and walk-in shower.

Bethnal Green and neighbouring Shoreditch have benefited from much regeneration over recent decades; renovated warehouses, independent shops, artisan coffee houses, highly rated restaurants and reclaimed vintage stores have made the area a popular place to own a property and a favourite destination for visitors. Columbia Road Flower Market, Spitalfields and Whitechapel are all close by as well as Westfield Stratford shopping centre and some fantastic green escapes further afield - Haggerston Park, London Fields, Queen Elizabeth's Olympic Park, and Victoria Park - voted London's favourite outdoor space.

The property is very well located, just moments from Bethnal Green Underground Station and a short walk to Victoria Park, the capital's favourite green space among Londoners. Broadway Market and Brick Lane are a short walk away.

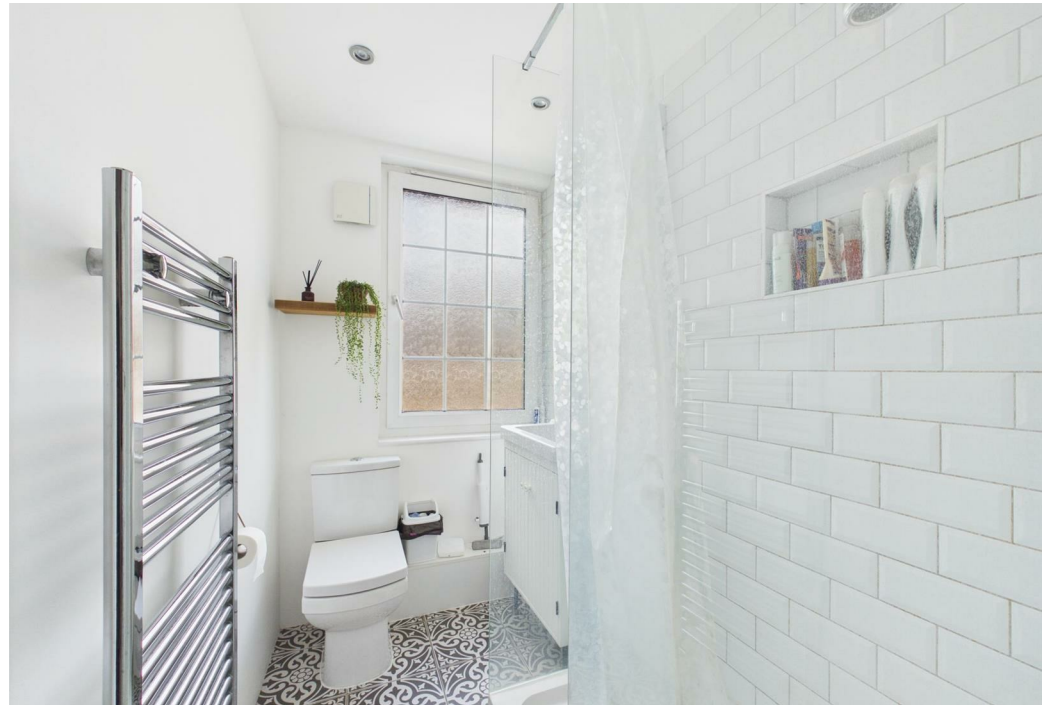
Unfurnished

Available: June

5 weeks deposit: £2769.23

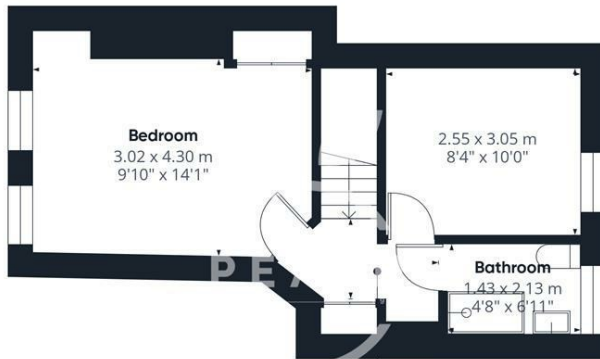
Council Tax: Band C







Floor 0



Floor 1

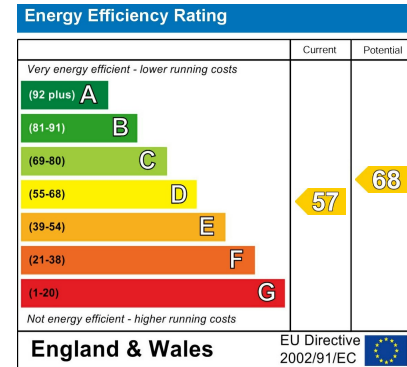


Approximate total area<sup>(1)</sup>  
51.8 m<sup>2</sup>  
558 ft<sup>2</sup>

(1) Excluding balconies and terraces

Calculations reference the RICS IPMS 3C standard. Measurements are approximate and not to scale. This floor plan is intended for illustration only.

GIRAFFE360



Agents Note: Whilst every care has been taken to prepare these particulars, they are for guidance purposes only. All measurements are approximate and are for general guidance purposes only and whilst every care has been taken to ensure their accuracy, they should not be relied upon and potential buyers/tenants are advised to recheck the measurements

**OFFICE ADDRESS**  
88 Cheshire Street  
London  
E2 6EH

**OFFICE DETAILS**  
0207 739 6969  
info@peachproperties.com  
www.peachproperties.com