



Wharf Road, N1

£895,000

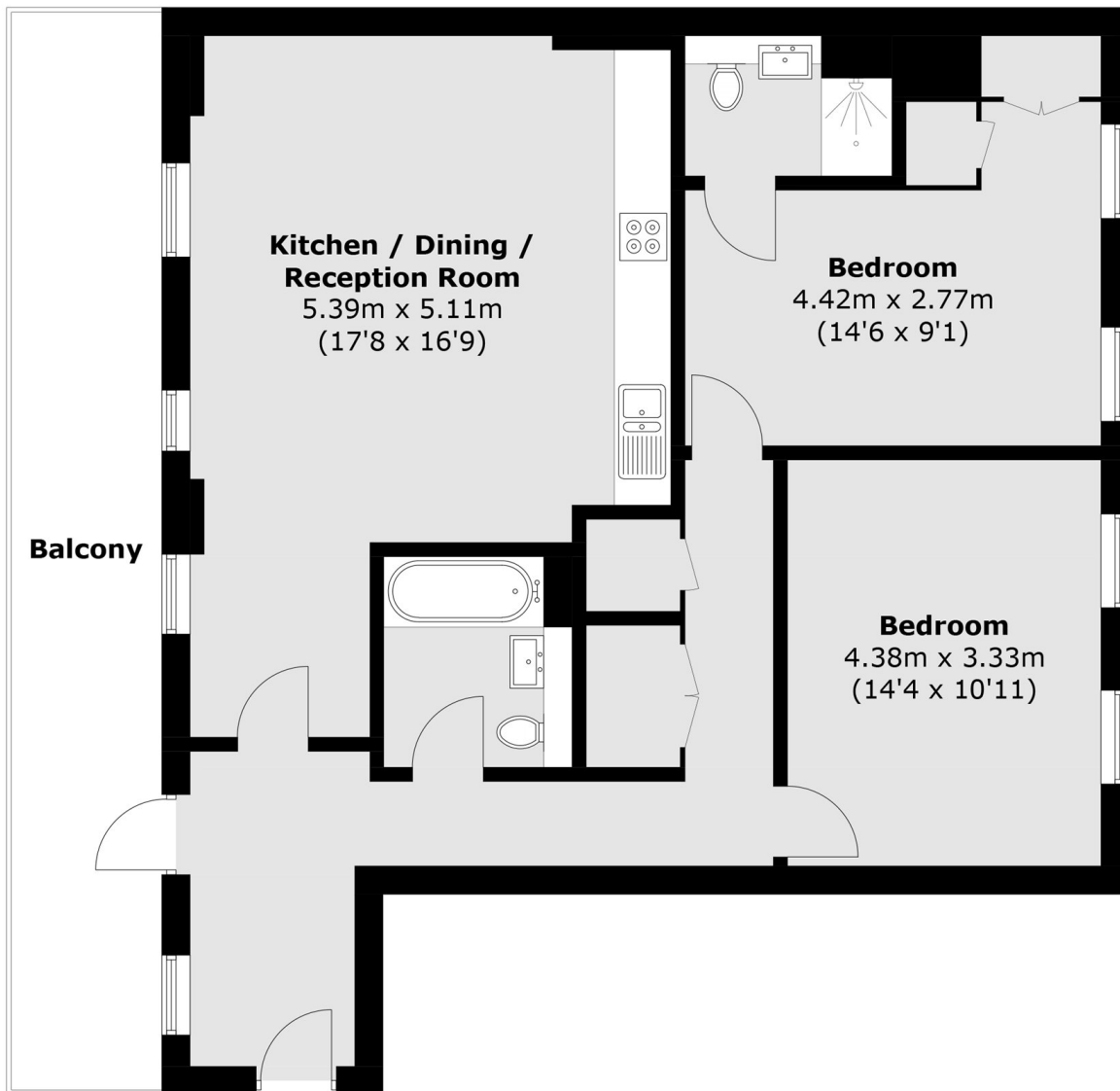
A well presented two-bedroom, two-bathroom apartment in the highly regarded Merchant Building. This high-spec apartment features a spacious open-plan kitchen and reception area that opens onto a private balcony with views toward Shoreditch. The layout includes a principal bedroom with an en-suite and fitted wardrobes, a second double bedroom, and a modern family bathroom. Residents benefit from a 24-hour concierge, a landscaped courtyard, a communal roof terrace and concierge.

The Merchant Building is ideally positioned along Regent's Canal, with Shoreditch Park and Rosemary Gardens close by, as well as scenic towpath walks and cycle routes. Excellent transport links are available via Old Street, Angel and Hoxton stations, providing easy access across London. The surrounding area offers a vibrant mix of independent cafés, restaurants and shops, with Upper Street, Shoreditch and the City all within easy reach for leisure and culture.

Features

- Modern Development
- Secure Entry
- Concierge
- Communal Roof Terrace
- Private Balcony
- Canal Side Development

Wharf Road, London, N1



Total area (approx.): 89.4 sq. m (962.3 sq. ft)
Balcony: 18.3 sq. m (197.8 sq. ft)