



Connells

Catherine Court Sopwith Road
Eastleigh

Catherine Court Sopwith Road Eastleigh SO50 5LN

for sale offers over
£90,000



Property Description

Discover the epitome of comfortable retirement living at Catherine Court in Eastleigh. This thoughtfully designed apartment is a sanctuary of safety and serenity.

As you step into the entrance hall you will notice the reassuring presence of a safety red pull cord, ensuring your well-being is a top priority.

The modern kitchen boasts fitted appliances, making meal preparation a breeze.

The spacious lounge features an electric fireplace, creating a cosy ambiance.

The bedroom comes complete with a double fitted wardrobe providing a perfect retreat.

The bathroom is a haven of relaxation, offering both a shower and a separate bath.

You will also enjoy the comfort of under floor heating throughout, ensuring warmth and cosiness in every corner of your home.

Catherine Court extends beyond your private space with inviting communal areas, including a laundry room, a communal lounge, and a dining room where you can connect with neighbours and friends. A guest suite can be reserved for your loved ones, making visits extra convenient.

Outside you will find a communal garden where you can soak up the sun, a roof terrace with scenic views, and parking subject to availability. For your convenience The apartments location is conveniently close to the town centre, offering easy access to shops, restaurants and everything you need.

Entrance Hall

Built in cupboard. Telephone intercom. Emergency pull cord.

Lounge Diner

Double glazed window to front aspect. Electric fireplace. TV and telephone port. Under floor heating.

Kitchen

Double glazed window to front aspect. Modern fitted kitchen with wall and base units. Fitted electric hob and extractor fan. Electric oven. Integral fridge freezer. Stainless steel sink and drainer set into worktop.

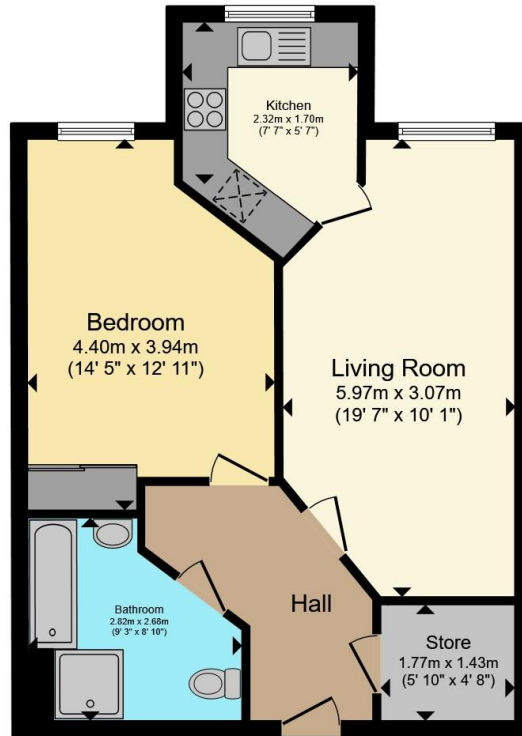
Bedroom

Double glazed window to front aspect. Built in double wardrobe. Under floor heating. TV and telephone port.

Bathroom

Bathtub. Walk in shower. Vanity sink and unit with fitted cupboard. Toilet. Electric towel rail. Fully tiled. Fully tiled. Fitted handrails. Red emergency pull cord.





Total floor area 52.9 m² (569 sq.ft.) approx

This floor plan is for illustrative purposes only. It is not drawn to scale. Any measurements, floor areas (including any total floor area), openings and orientation are approximate. No details are guaranteed, they cannot be relied upon for any purpose and they do not form part of any agreement. No liability is taken for any error, omission or misstatement. A party must rely upon its own inspection(s). Powered by www.propertybox.io

Connells



To view this property please contact Connells on

T 02380 618 343
E eastleigh@connells.co.uk

19 Market Street
 EASTLEIGH SO50 5RH

EPC Rating: B Council Tax
 Band: B

Service Charge:
 10384.57

Ground Rent:
 435.00

Tenure: Leasehold

view this property online connells.co.uk/Property/EGH309497

This is a Leasehold property. We are awaiting further details about the Term of the lease. For further information please contact the branch. Please note additional fees could be incurred for items such as Leasehold packs.



1. MONEY LAUNDERING REGULATIONS Intending purchasers will be asked to produce identification documentation at a later stage and we would ask for your co-operation in order that there will be no delay in agreeing the sale. 2. These particulars do not constitute part or all of an offer or contract. 3. The measurements indicated are supplied for guidance only and as such must be considered incorrect. Potential buyers are advised to recheck measurements before committing to any expense. 4. We have not tested any apparatus, equipment, fixtures, fittings or services and it is in the buyers interest to check the working condition of any appliances.

Connells Residential is registered in England and Wales under company number 1489613, Registered Office is Cumbria House, 16-20 Hockliffe Street, Leighton Buzzard, Bedfordshire, LU7 1GN. VAT Registration Number is 500 2481 05.

See all our properties at www.connells.co.uk | www.rightmove.co.uk | www.zoopla.co.uk

Property Ref: EGH309497 - 0006