



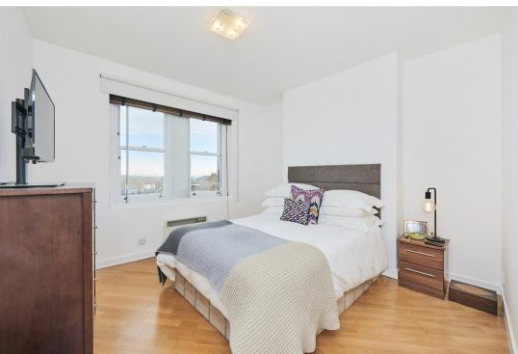
Hampstead High Street

Hampstead, NW3

£3,100 per month
(£715.38 per week)

A stylish 2 double bedroom 3rd floor apartment boasting wood floors throughout and amazing views across London. The property is set in this Victorian building situated in the heart of Hampstead Village within easy reach of all the shopping amenities. Accommodation comprises reception room with triple aspect windows, open plan fully fitted kitchen, 2 double bedrooms, smart bathroom with contemporary fittings.

CHESTERTONS



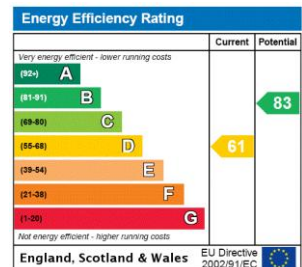
Hampstead High Street

Hampstead, NW3

- Stylish 3rd Floor Apartment in Period Building
- 2 Bedrooms, 1 Bathroom, Reception, Open Plan Kitchen
- Wood Floors Throughout, Amazing Views Across London
- Situated in the Heart of Hampstead Village Within Easy Reach of the Shopping Amenities



Deposit Required: £3,576.92
Local Authority: London Borough Of Camden
Council Tax Band: D
EPC Rating: D
Furnished

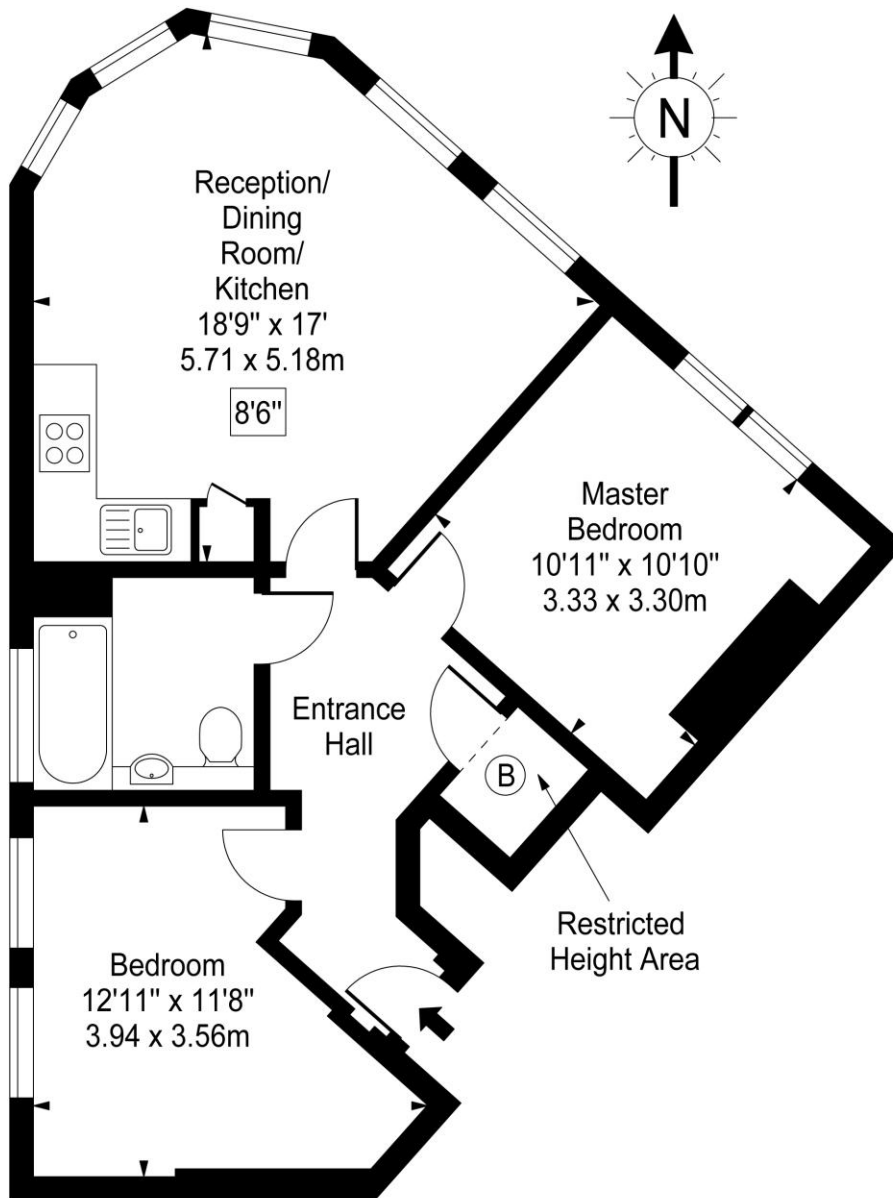


Chestertons Hampstead Lettings

55-56 Hampstead High Street
 Hampstead
 London
 NW3 1QH
hampsteadlettingsusers@chestertons.co.uk
 02077941125
chestertons.co.uk

Additional tenant charges apply (fees apply to non-AST tenancies only)
 Tenancy Agreement Fee: £300
 References per Tenant/Guarantor: £60
 Inventory check (approx. £100 – £250 inc. VAT)
chestertons.co.uk/property-to-rent/applicable-fees

Hampstead High Street, NW3



Third Floor

Approx Gross Internal Area **603 Sq Ft - 56.02 Sq M**
(Including Restricted Height Area)

For Illustration Purposes Only - Not To Scale

www.goldlens.co.uk

Prepared for Chestertons

Ref. No. 007043M

