



**Price**  
**£500,000**

**Freehold**

3x  1x  1x 

**Maydowns Road,  
Chestfield, Whitstable,  
Kent, CT5**

**OVER 60?**

Secure this property  
for up to **59% less!**

*Wards*  
Helping you move forwards

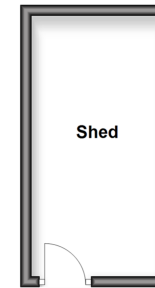




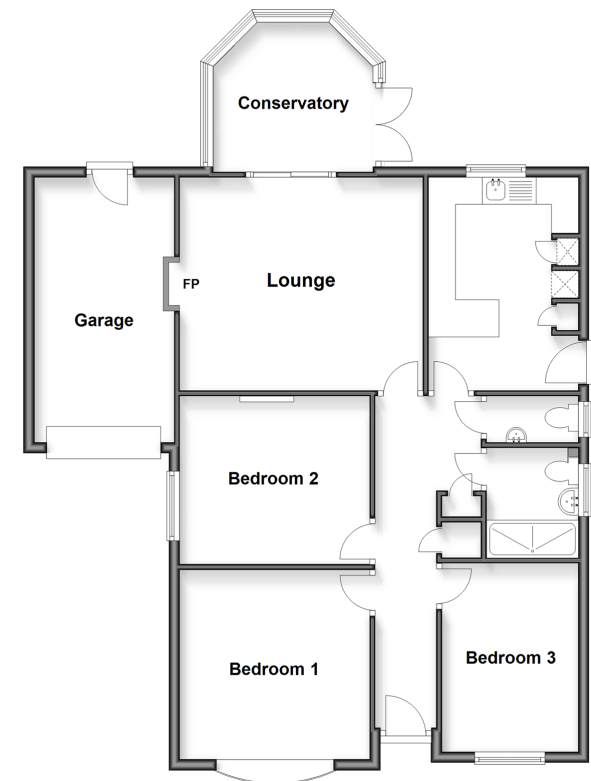
## Main features

- No onward chain
- Neutrally presented with new carpets and fresh paint throughout
- Garage and driveway
- Well maintained conservatory overlooking the mature garden
- Ready to move in.

**Outbuilding**  
Approx. 11.6 sq. metres (124.6 sq. feet)



**Ground Floor**  
Approx. 100.0 sq. metres (1076.8 sq. feet)



## Accommodation

### GROUND FLOOR

Entrance Hallway

Bedroom 1 : 11'8 x 11'6 (3.56m x 3.51m)

Bedroom 2 : 11'5 x 8'3 (3.48m x 2.52m)

Bedroom 3: 11'7 x 10'3 (3.53m x 3.13m)

Bathroom

Cloakroom

Lounge: 14'10 x 13'10 (4.52m x 4.22m)

Conservatory : 10'10 x 9'4 (3.30m x 2.85m)

Kitchen: 13'1 x 9'2 (3.99m x 2.80m)

### OUTSIDE

Driveway

Front Garden

Garage

Rear Garden

### OUT BUILDING

Garden Shed



**Call Whitstable - 01227 772272 ■ [wardsofkent.co.uk](http://wardsofkent.co.uk)**

- Legal advice should be taken to verify fixtures/fittings, planning, alterations and/or lease details
- Appliances & services are untested, dimensions are approximate and floor plans are not to scale
- Through a Homewise Home For Life Plan people aged 60+ can secure this property for up to 50% less, by purchasing a Lifetime Lease.



12033941/20251111/AR/NF