



Littlewood Lane,
Walsall, WS6 7EJ

Offers in the Region Of £500,000

An Exceptional Four-Bedroom Detached Family Home with Double Garage, Private Setting & Stylish Interiors Tucked away along a private access road in the highly desirable area of Cheslyn Hay, this impressive purpose-built four-bedroom detached residence offers a superb balance of space, style, and practicality—ideal for modern family living. The property also benefits from being within the catchment area for the well-regarded Cheslyn Hay Academy.

Beautifully presented throughout, the home opens into a welcoming entrance, leading to three versatile reception rooms that cater effortlessly to both everyday living and entertaining. Whether used as formal dining, a family lounge, or a home office, the layout offers flexibility to suit a variety of lifestyles. At the heart of the home lies a recently installed, high-quality fitted kitchen, thoughtfully designed with integrated appliances and contemporary finishes. A separate utility room enhances functionality, while a convenient downstairs WC adds to the home's practical appeal.

To the first floor, four generously sized double bedrooms provide comfortable accommodation for families of all sizes. The principal bedroom enjoys the added luxury of a private en-suite bathroom, while a modern family bathroom serves the remaining bedrooms with ease.

Externally, the property continues to impress. A substantial driveway provides ample off-road parking and leads to a double garage, offering further storage or potential workshop space. The rear garden is private and well-maintained, featuring a patio area, lawn, and a charming summer house—currently utilised as a bar—creating an ideal setting for outdoor entertaining and relaxation.

Combining a peaceful setting with excellent access to local amenities, transport links, and highly regarded schooling, this outstanding home presents a rare opportunity to acquire a property of both quality and versatility in a sought-after location.

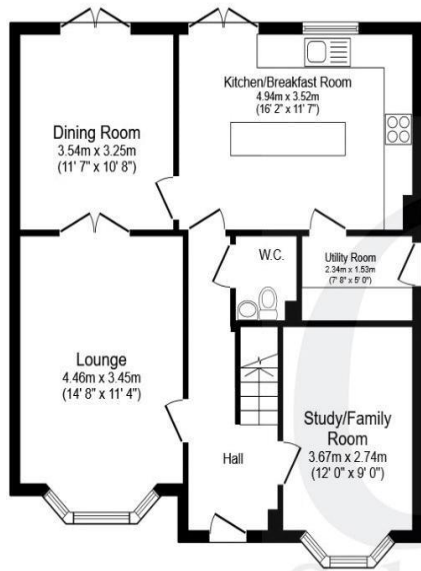




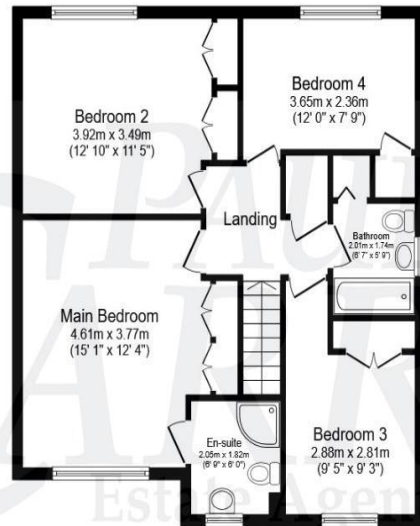


Floor Plan

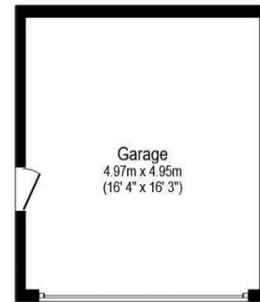
This floor plan is not drawn to scale and is for illustration purposes only



Ground Floor
 Floor area 72.5 sq.m. (780 sq.ft.)



First Floor
 Floor area 71.0 sq.m. (764 sq.ft.)



Garage
 Floor area 24.3 sq.m. (261 sq.ft.)

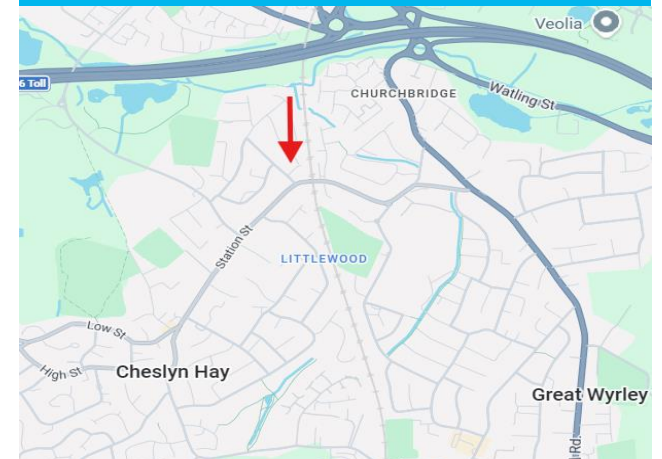
Total floor area: 167.7 sq.m. (1,805 sq.ft.)

This floor plan is for illustrative purposes only. It is not drawn to scale. Any measurements, floor areas (including any total floor area), openings and orientations are approximate. No details are guaranteed, they cannot be relied upon for any purpose and do not form any part of any agreement. No liability is taken for any error, omission or misstatement. A party must rely upon its own inspection(s).

Energy Performance Rating

Score	Energy rating	Current	Potential
92+	A		
81-91	B		87 B
69-80	C	79 C	
55-68	D		
39-54	E		
21-38	F		
1-20	G		

Map Location







Agent's Note:

Every care has been taken with the preparation of these Sales Particulars but they are for general guidance only and complete accuracy cannot be guaranteed. If there is any point which is of particular importance, professional verification should be sought. The mention of any fixtures, fittings and/or appliances does not imply they are in full efficient working order as they have not been tested. All dimensions are approximate. Photographs are reproduced for general information and it cannot be inferred that any item shown is included in the sale. These Sales Particulars do not constitute a contract or part of a contract. Came on the market:

Identity Verification Fee - We are required by law to conduct anti-money laundering checks on all those buying a property as part of our due diligence. As agents acting on behalf of the seller, we are required to verify the identity of all purchasers once an offer has been accepted, subject to contract. The initial checks are carried out on our behalf by Lifetime Legal. A non-refundable administration fee of £40 + VAT (£48 including VAT) applies which covers the cost of obtaining relevant data and any manual checks and monitoring which might be required. This fee will need to be paid by you in advance of us issuing a memorandum of sale, directly to Lifetime Legal, and is non-refundable.