

**Riggindale Road**  
Streatham, SW16

**Dexters**





### About the property

At over 3,000 sq. ft, this is a grand, five bedroom family home with off-street parking. The house is filled with natural light and has a large open living area with bi-fold doors leading onto a landscaped garden.

The kitchen has ample storage and a central island featuring a breakfast bar, flowing into the dining and reception areas to create an exceptional layout.

Upstairs are five double bedrooms over two floors, two with en suite bathrooms, along with a family bathroom, a separate study with built-in storage and an additional WC.

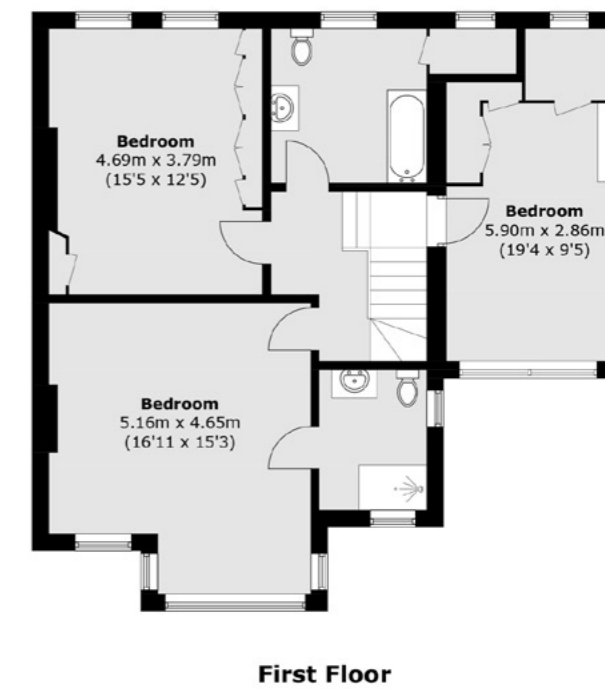
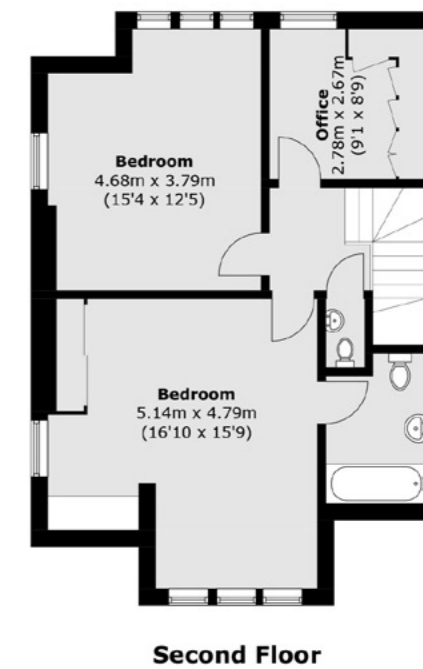
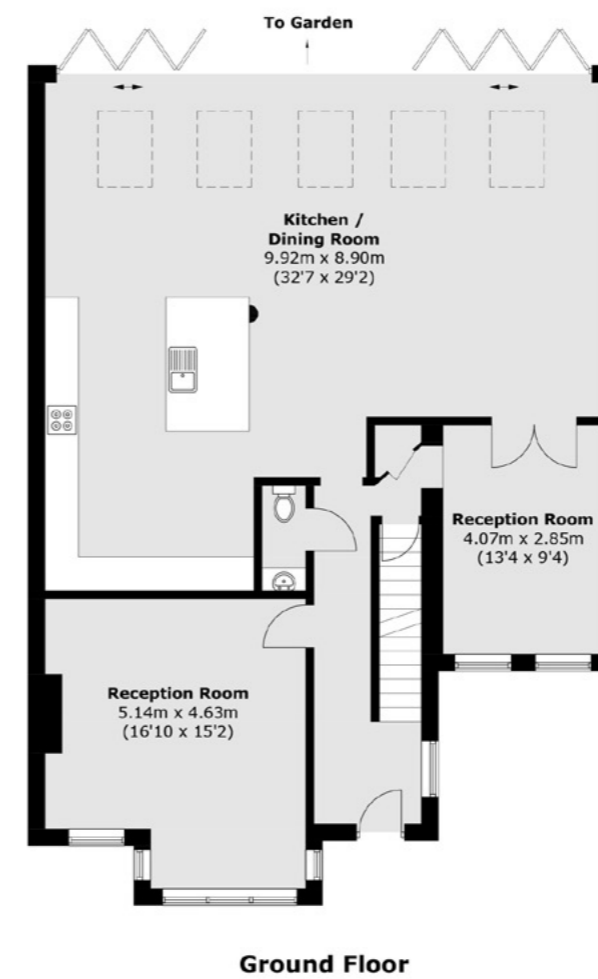
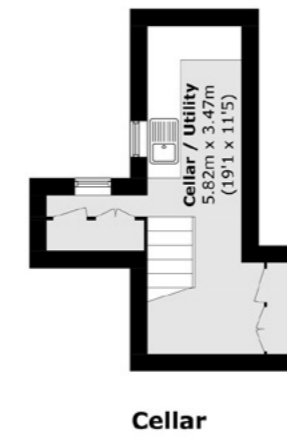
The location of this home provides good access to both Tooting and Streatham, offering an excellent choice of rail, tube and bus links to the city along with an eclectic mix of independent and High Street shops, bars and restaurants.

### Key features

- Detached House
- Over 3,000 sq. ft
- Five Bedrooms
- Off-Street Parking
- Utility Room
- Two Separate Receptions







TOTAL APPROX. FLOOR AREA 3,021.5 SQ. FT (280.7 SQ. M)(INCLUDING CELLAR)

Energy Rating: D. We aim to make our particulars both accurate and reliable. However they are not guaranteed; nor do they form part of an offer or contract. If you require clarification on any points then please contact us, especially if you're traveling some distance to view. Please note that appliances and heating systems have not been tested and therefore no warranties can be given as to their good working order.



Dexters Streatham  
105 Streatham Hill  
London, SW2 4UG  
020 8674 7400

**Dexters**