

Location:

Birkbeck Road is a quiet residential street, a short walk from Churchfield Road's many independent shops, cafes and restaurants. Transport links include Acton Main Line for the Elizabeth Link, Acton Central (London Overground) and Acton Town (District and Piccadilly line).

Key points:

- Two bedrooms
- Two bathrooms (one en-suite)
- Newly converted in 2016
- Set within an attractive period building
- Private east-facing garden
- Share of freehold
- No onward chain

Do Better:

Acton

sales@astonrowe.co.uk

57-59 Churchfield Road, Acton, London, W3 6AY

020 8992 3600

Birkbeck Road

Approximate Gross Internal Area = 60.8 sq m / 655 sq ft

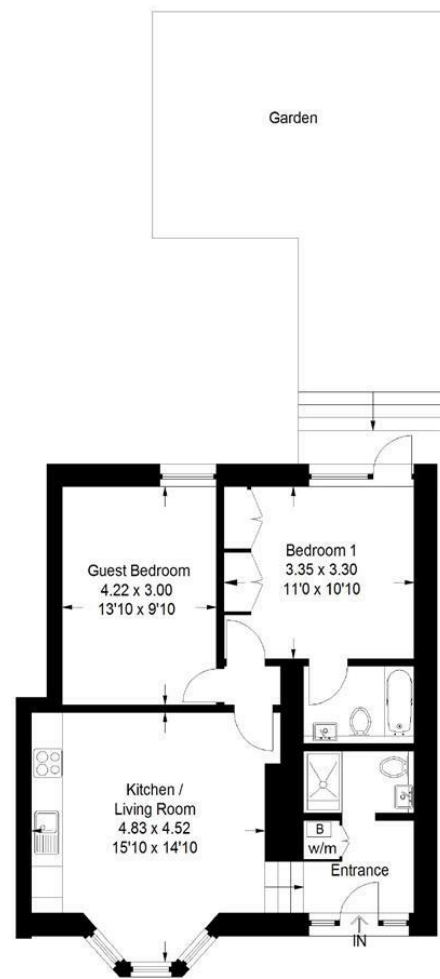


Illustration for identification purposes only, measurements are approximate, not to scale. FloorplansUsketch.com © 2014 (ID138310)



Offers Over £500,000

Birkbeck Road, London W3 6BQ

Energy Efficiency Rating	
Current	Potential
Very energy efficient - lower running costs	
92 plus) A	
81-91) B	
69-80) C	
55-68) D	
39-54) E	
21-38) F	
1-20) G	
Not energy efficient - higher running costs	
England & Wales	
EU Directive 2002/91/EC	

Environmental Impact (CO ₂) Rating	
Current	Potential
Very environmentally friendly - lower CO ₂ emissions	
92 plus) A	
81-91) B	
69-80) C	
55-68) D	
39-54) E	
21-38) F	
1-20) G	
Not environmentally friendly - higher CO ₂ emissions	
England & Wales	
EU Directive 2002/91/EC	

- 1 Reception Rooms
- 2 Bedrooms
- 2 Bathrooms



A beautifully presented two bedroom ground floor garden flat located off the popular Churchfield Road in Acton.

The property benefits from its own private entrance and offers two double bedrooms, two bathrooms (one en-suite), a bright and spacious open-plan kitchen/living area and an east-facing garden.

Located in a popular residential area, this property is well located to both Acton Overground and Acton Mainline Stations. The vibrant café culture of Churchfield Road offers a great selection of boutique shops, bars and eateries.

Please note that the photographs seen are from when the property was marketed for let

The current owner says:

The property is in a great location for the local shops, schools, parks and transport links.

What's better:

A beautifully presented two bedroom ground floor garden flat in W3..

