



Tewkesbury Road, W13

£525,000

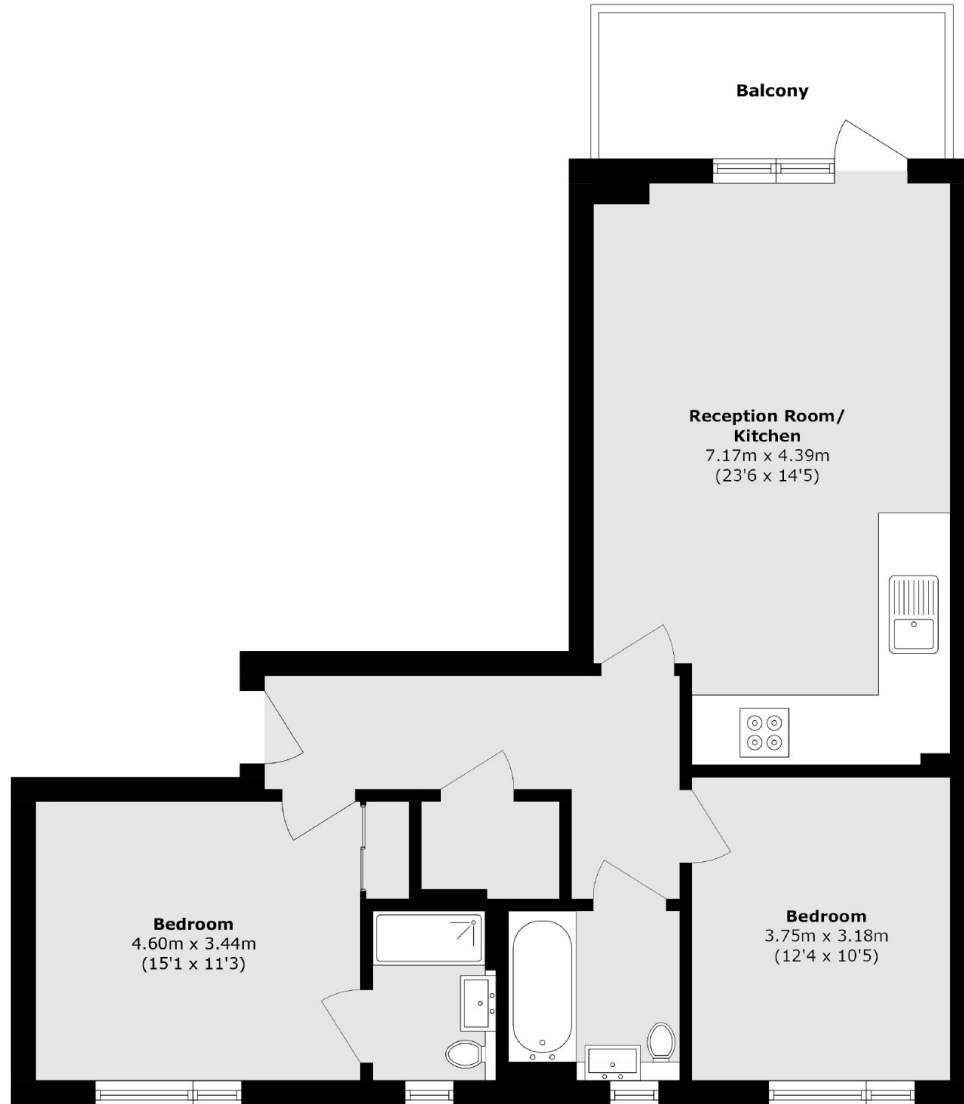
This two double bedroom, two bathroom is located on the second floor of a newly constructed development. The property has a private balcony overlooking a central courtyard and an allocated underground parking space. Completed in 2021 there is approximately 5 years build warranty remaining.

Ballarat House is part of the newly regenerated Jigsaw development that is located just half a mile from the new Elizabeth line trains at West Ealing station. There are numerous shops, gym's and amenities close by, along with a Waitrose superstore.

Features

- Two Bedrooms
- Two Bathrooms
- Allocated Parking
- Private Balcony
- Remaining New Build Warranty
- No Onward Chain

Tewkesbury Road,
London, W13



Total area (approx.): 78.4 sq. m (843.8 sq. ft)

Balcony area (approx.): 7.6 sq. m (81.8 sq. ft)

Dexters

Ealing
2 New Ealing Broadway
London
W5 2NU
Sales
020 8810 0909

Energy Rating: B. We aim to make our particulars both accurate and reliable. However they are not guaranteed; nor do they form part of an offer or contract. If you require clarification on any points then please contact us, especially if you're traveling some distance to view. Please note that appliances and heating systems have not been tested and therefore no warranties can be given as to their good working order.

RICS | Regulated
Estate Agent
and Letting Agent

dexters.co.uk