



Bayleaf Avenue, Hampton Vale Peterborough
£255,000 Freehold

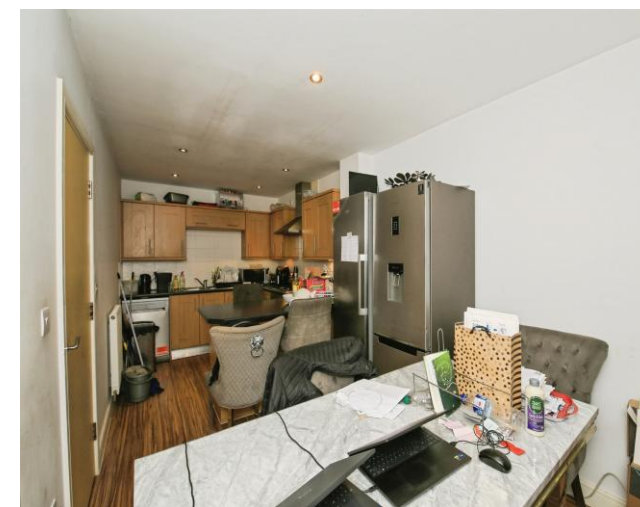
**Sharman
Quinney**

Key Features



- Modern Three Storey Town House
- Three Bedrooms + En-Suite Shower Room
- Kitchen/Diner + Lounge
- Downstairs Cloakroom + Utility Room
- Single Garage + Rear Garden

Located in the popular area of Hampton Vale. Being sold with No Upward Chain, benefits from having secure gated access to the Two Allocated Parking Spaces, in brief the accommodation comprises of, Entrance Hall with a built-in storage cupboards, door to the Inner Hallway with stairs to the first floor landing, door to the rear garden and doors to, Two Piece Downstairs Cloakroom, Kitchen/Diner which is fitted with a range of base and eye level units, cupboards and drawers, worktop space, single drainer sink unit, built-in gas hob, electric oven, space for fridge/freezer, Utility Room also fitted with matching range of base and eye level units, worktop space with a single drainer sink unit, plumbing for washing machine, concealed wall mounted heating boiler, First Floor Landing with stairs to the second floor landing, doors to the Lounge with double doors to the



Juliet balcony, Bedroom 1 has some fitted wardrobes and overhead cupboards, door to the Three Piece Shower Room, Second Floor Landing with doors to Bedrooms 2 & 3 and to the Three Piece Shower Room, Outside frontage open plan, rear garden enclosed with gated access to the parking spaces.

Entrance Hall - 5'7" x 4'6"

Built-in Cupboard - 5'7" x 1'8"

Inner Hallway - 19'6" 3'8" (excluding stairs)

Downstairs Cloakroom - 6'max x 2'7"max

Kitchen/Diner - 20' x 8'7"

Utility Room - 8'9" x 5'3"

First Floor Landing - 12'9"max x 6'5"max
(including stairs)

Lounge - 16'max x 12'5"max

Bedroom 1 - 11'3" max x 9'2"max (including wardrobe)

En-Suite Shower - 9'max x 3'9"max (including shower cubicle)

Second Floor Landing - 6'8" x 3'1"

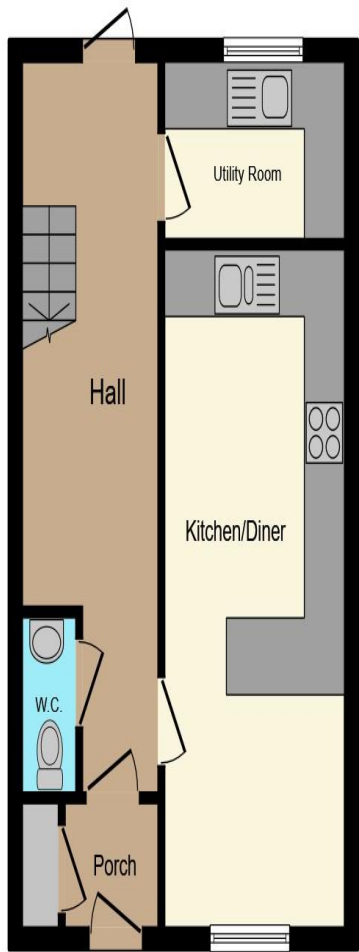
Bedroom 2 - 10'max x 9'1"max (excluding dormer window)

Bedroom 3 - 12'6"max x 8'4"max (excluding dormer window)

Family Bathroom - 6'1"max x 5'7"max

Agents Note: The sale of this property is subject to receipt of Grant of Probate. Please obtain an update from the branch with regards to the potential timeframes involved.

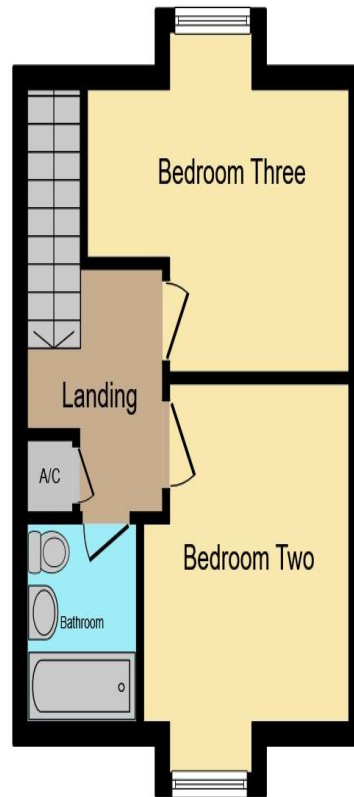




Ground Floor



First Floor



Second Floor

This floor plan is for illustrative purposes only. It is not drawn to scale. Any measurements, floor areas (including any total floor area), openings and orientation are approximate. No details are guaranteed, they cannot be relied upon for any purpose and they do not form part of any agreement. No liability is taken for any error, omission or misstatement. A party must rely upon its own inspection(s). Powered by www.focalagent.com

To view this property call Sharman Quinney on:
01733 245400

Selling your property?

Contact us to arrange a **FREE** home valuation.

 01733 245400

 Unit 19 Maltings Square, Broadway Shopping Centre, Yaxley, Cambridgeshire, PE7 3EW

 yaxley@sharmanquinney.co.uk

 www.sharmanquinney.co.uk



 SCAN ME



Sharman Quinney Holdings Limited is registered in England and Wales under company number 4174227, Registered Office is Cumbria House, 16-20 Hockliffe Street, Leighton Buzzard, Bedfordshire, LU7 1GN. VAT Registration Number is 500 2481 05.

1: These particulars do not constitute part or all of an offer or contract. 2: The measurements indicated are supplied for guidance only and as such must be considered incorrect. 3: Potential buyers are advised to recheck the measurements before committing to any expense. 4: Sharman Quinney has not tested any apparatus, equipment, fixtures, fittings or services and it is the buyers interests to check the working condition of any appliances. 5: Sharman Quinney has not sought to verify the legal title of the property and buyers must obtain verification from their legal representative. 6: Intending purchasers will be asked to produce identification documentation at a later stage and we would ask your co-operation in order that there will be no delay in agreeing the sale. Ref: YAX203963 - 0001

