

Castles



ASKING PRICE

£184,950

Bury Street West

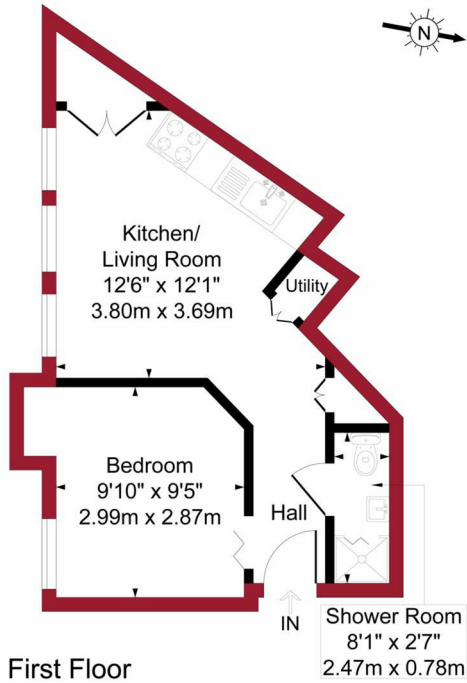
London, N9 9JJ

PROPERTY SUMMARY

Castles are delighted to present this first floor flat situated on the Bush Hill side of the A10, offered on a chain free basis. The flat consists of three piece bathroom, kitchen/living space and bedroom. The property benefits from double glazing and it is within a mile of Bush Hill Park Railway Station.

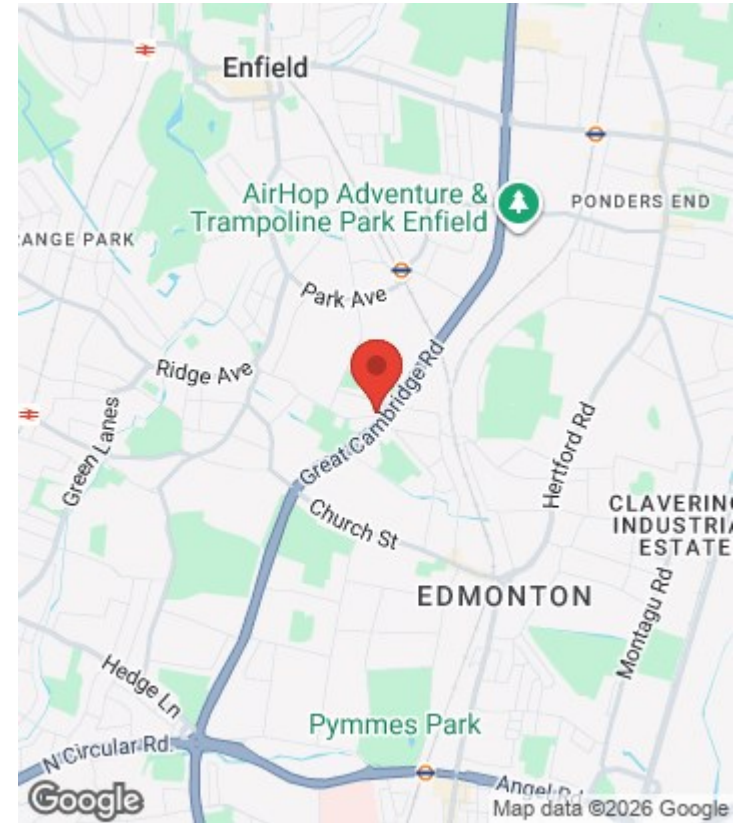
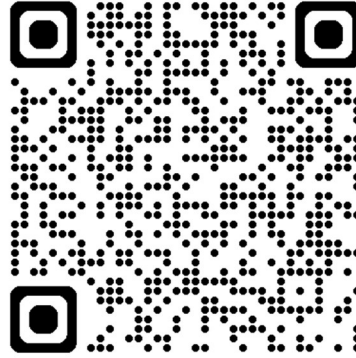






First Floor

For a guide to the area please scan this code for more information



Flat - First Floor

Leasehold

Council:

Council Tax Band: A



Floor plan produced in accordance with RICS Property Measurement 2nd Edition. Although Pink Plan Ltd ensures the highest level of accuracy, measurements of doors, windows and rooms are approximate and no responsibility is taken for error, omission or misstatement. These plans are for representation purposes only and no guarantee is given on the total square footage of the property within this plan. The figure icon is for initial guidance only and should not be relied on as a basis of valuation.



Agents Note: Whilst every care has been taken to prepare these particulars, they are for guidance purposes only. All measurements are approximate and are for general guidance purposes only and whilst every care has been taken to ensure their accuracy, they should not be relied upon and potential buyers/tenants are advised to recheck the measurements



OFFICE ADDRESS

438 Hertford Road
Edmonton
London
N9 8AB

OFFICE DETAILS

020 8804 8123
edmonton@castles.london
<https://www.castles.london/>

Energy Efficiency Rating		Current	Potential
Very energy efficient - lower running costs			
(92-100) A	(81-91) B		
(69-80) C	(55-68) D	64	
(39-54) E	(21-38) F		25
(1-10) G			
Not energy efficient - higher running costs			
England & Wales		EU Directive 2002/91/EC	