



THORNTON AVENUE, SW2

£650,000

Chain free
Three bedrooms
Open plan kitchen/ reception
Telford Park Estate



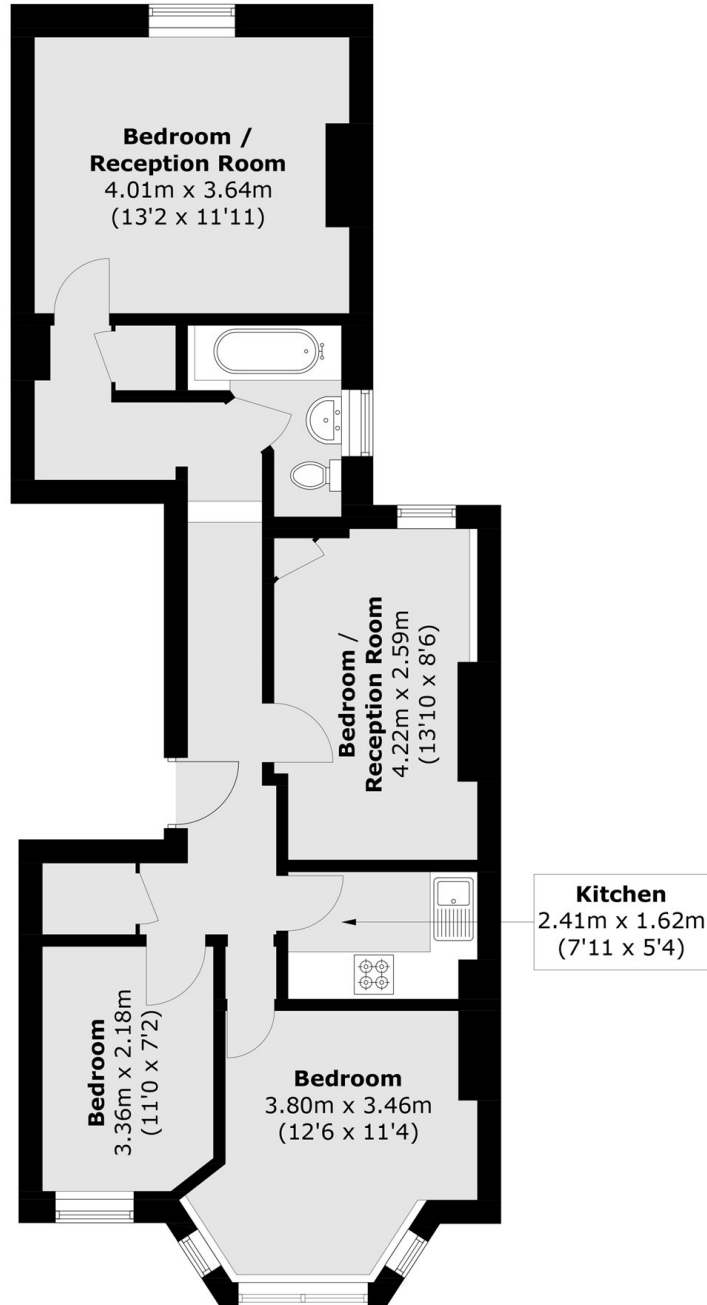
ABOUT THE PROPERTY

A beautifully renovated three-bedroom first floor Victorian conversion flat, set within the sought-after Telford Park Estate. Finished to an exceptional standard throughout, the property offers a bright and spacious kitchen/ living space and a modern interior .

Thornton Avenue is a popular residential street conveniently located for the amenities of both Balham and Streatham. Tooting Bec Common is also close by; local transport links include Streatham Hill Station, Balham Underground and Overground Stations all of which provide easy access into the City and the West End.



STEP INSIDE THORNTON AVENUE



Total area (approx.): 65.6 sq. m (706.1 sq. ft)

Streatham
020 8671 0171

Energy Rating: C We aim to make our particulars both accurate and reliable. However, they are not guaranteed; nor do they form part of an offer or contract. If you require clarification on any points then please contact us, especially if you're traveling some distance to view. Please note that appliances and heating systems have not been tested and therefore no warranties can be given as to their good working order

**MARSH &
PARSONS**