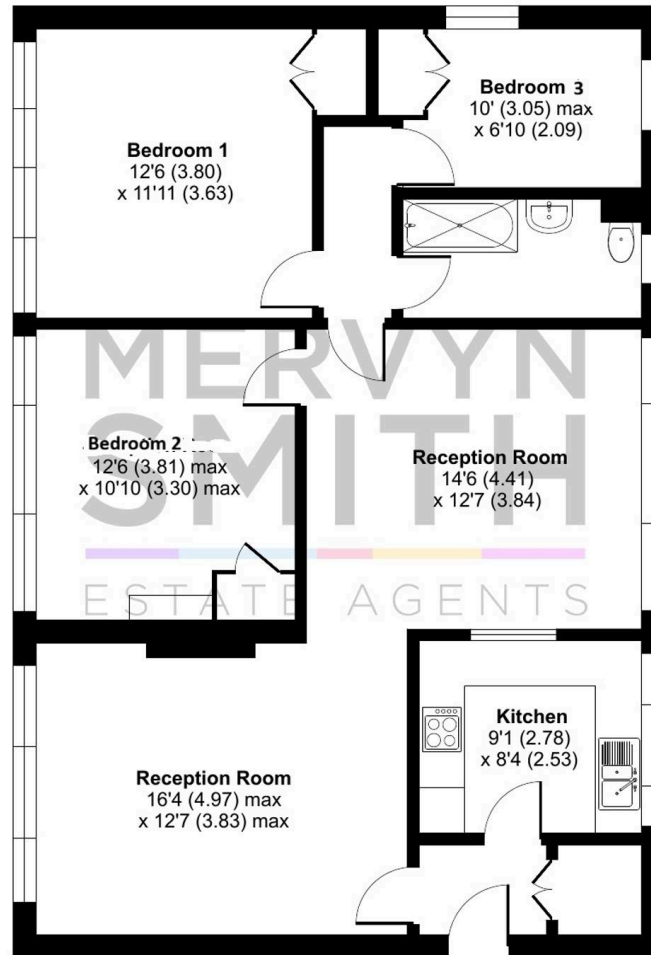




Marlowe Court, Richmond, TW10

Approximate Area = 1017 sq ft / 94.4 sq m

For identification only - Not to scale



GROUND FLOOR

This Grade II listed home, designed by pioneering architect Eric Lyons, forms part of a highly regarded conservation area known for its architectural significance and community feel. The accommodation includes a bright 16 ft reception room with feature fireplace, a separate dining room exceeding 14 ft, and a fitted kitchen. There are three bedrooms, including a well-proportioned principal bedroom (over 12 ft square), a second double bedroom, and a third single bedroom.

Council Tax band: E

Tenure: Share of Freehold

- **ICONIC MID CENTURY 3 BEDROOM 2 RECEPTION 1 BATHROOM GROUND FLOOR APARTMENT OVER 950 sq ft. SHARE OF FREEHOLD.** Grade 11 listed in conservation area. **NO CHAIN!**
- Lounge over 16 ft x 12 ft with fireplace, dining room over 14 ft x 12ft, fitted kitchen, main bedroom over 12 ft square, 2nd double bedroom, 3rd single bedroom.
- Nearby GARAGE also available by separate negotiation.
- Requiring general updating but offered at an attractive competitive price allowing for refurbishment.
- Grade II listed by English Heritage as the first Span development by pioneering architect Eric Lyons.
- Moments from the open spaces of Ham Common with its traditional village pond, pub and cricket square. Walking from Parkleys through Ham Common Woods leads directly up to Richmond Park
- Gas central heating with Worcester boiler
- Within reach of several sought after schools including

**MERVYN
SMITH**
SALES & LETTINGS



the Kingston
school and
the











This Grade II listed home, designed by pioneering architect Eric Lyons, forms part of a highly regarded conservation area known for its architectural significance and community feel. The accommodation includes a bright 16 ft reception room with feature fireplace, a separate dining room exceeding 14 ft, and a fitted kitchen. There are three bedrooms, including a well-proportioned principal bedroom (over 12 ft square), a second double bedroom, and a third single bedroom.

Council Tax band: E

Tenure: Share of Freehold

- **ICONIC MID CENTURY 3 BEDROOM 2 RECEPTION 1 BATHROOM GROUND FLOOR APARTMENT OVER 950 sq ft. SHARE OF FREEHOLD.** Grade 11 listed in conservation area. **NO CHAIN!**
- Lounge over 16 ft x 12 ft with fireplace, dining room over 14 ft x 12ft, fitted kitchen, main bedroom over 12 ft square, 2nd double bedroom, 3rd single bedroom.
- Nearby GARAGE also available by separate negotiation.
- Requiring general updating but offered at an attractive competitive price allowing for refurbishment.
- Grade II listed by English Heritage as the first Span development by pioneering architect Eric Lyons.
- Moments from the open spaces of Ham Common with its traditional village pond, pub and cricket square. Walking from Parkleys through Ham Common Woods leads directly up to Richmond Park
- Gas central heating with Worcester boiler
- Within reach of several sought after schools including Ofsted Outstanding Grey Court School, The Kingston Academy, Fernhill School, the German School and high achieving Tiffin Girls School.
- Largest Parkleys apartment design within the development



You can include any text here. The text can be modified upon generating your brochure.

You can include any text here. The text can be modified upon generating your brochure.



Mervyn Smith

315 Richmond Road, Kingston Upon Thames - KT2 5QU

020 8549 5099 • mail@mervynsmith.co.uk • <http://www.mervynsmith.co.uk/>

This document is for informational purposes only and does not constitute legal or financial advice. While we strive to ensure accuracy, we do not accept liability for errors or omissions. Buyers and sellers should seek independent professional advice before making any decisions. Property details are subject to change and should be independently verified.