



Sandpiper Court, 8 Thomas More Street, E1W 1AS
£2,700 PCM

Sandpiper Court, 8 Thomas More Street, E1W

- Large one bedroom apartment
- Approx 795 sq ft
- Fifth floor
- Dock views
- Wood flooring
- Concierge
- Parking

A large one bedroom apartment arranged over 795 sq ft on the 5th floor of a sought after development located by St Katharine's Dock.

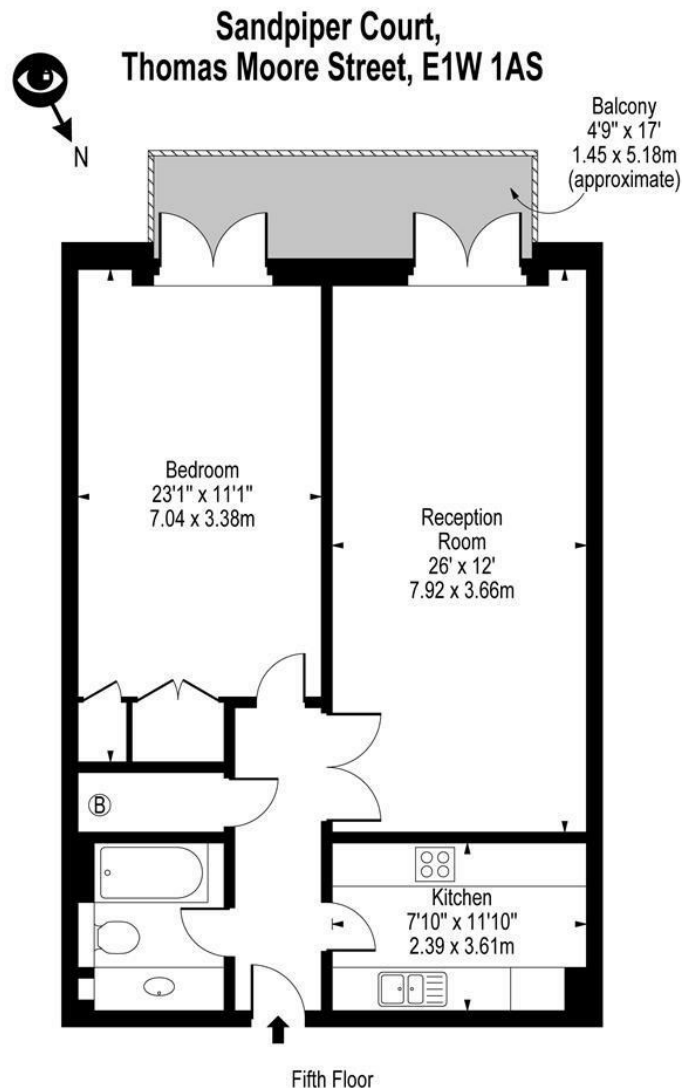
Features include stunning views over the dock from the living room and bedroom with a private balcony extending the full width of the apartment.

A large one bedroom apartment arranged over 795 sq ft on the 5th floor of a sought after development located by St Katharine's Dock.

Features include stunning views over the dock from the living room and bedroom with a private balcony extending the full width of the apartment.

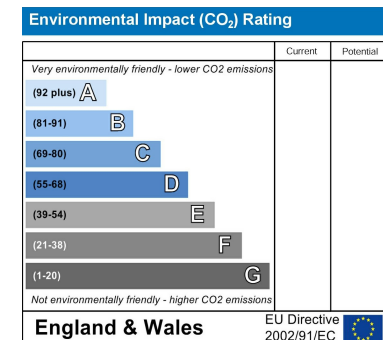
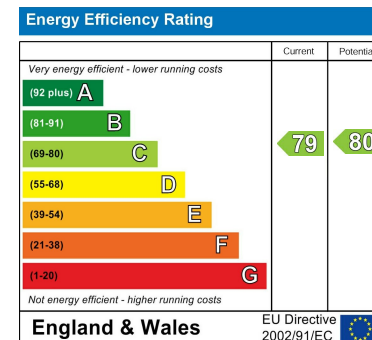






Approx Gross Internal Area **795 Sq Ft - 73.86 Sq M**

For Illustration Purposes Only - Not To Scale
Floor Plan by www.bpmmediagroup.com
Ref: No. P39623



Viewing

Strictly by appointment with:
Coopers of London , 22 Cleveland Street,
Fitzrovia, London W1T 4JB
info@coopersonlondon.co.uk

0207 580 9658

These particulars, whilst believed to be accurate are set out as a general outline only for guidance and do not constitute any part of an offer or contract. Intending purchasers should not rely on them as statements or representation of fact, but must satisfy themselves by inspection or otherwise as to their accuracy. No person in this firms employment has the authority to make or give any representation or warranty in respect of the property.