

## Marsh Wall, E14

£650,000

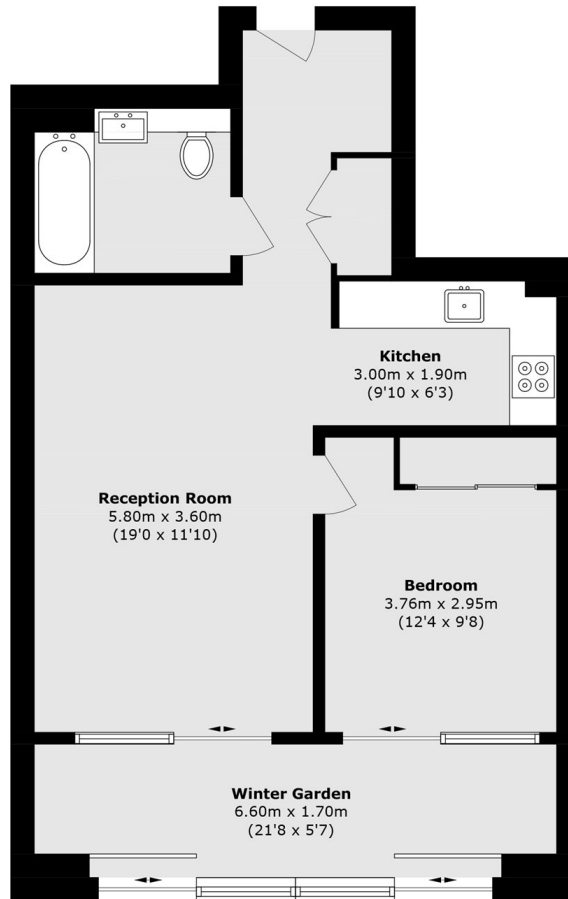
Located on the 32nd floor, this west facing one bedroom apartment benefits from landmark views across London. The property features a winter garden, a high specification bathroom and a modern kitchen. Residents benefit from access to exclusive leisure facilities, a 24-hour concierge service, a gym with elevated views and a panoramic sky garden.

Located on the western edge of Canary Wharf, the property benefits from excellent transport connections, including Heron Quays DLR station (0.3 miles), Canary Wharf Underground station (0.5 miles) and regular Thames Clippers river services (0.3 miles).

### Features

- 32nd Floor
- West Facing
- Resident Facilities
- Winter Garden
- Concierge services
- Chain free

# Marsh Wall, London, E14



Total area (approx.): 62.3 sq. m (670.5 sq. ft)  
(Including Winter Garden)