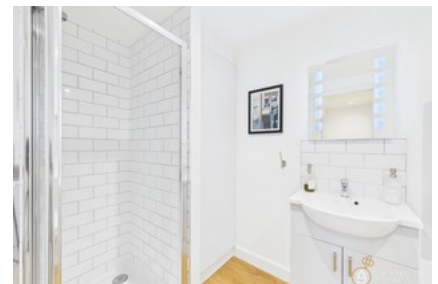




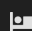
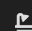
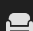
38 Commercial Street, Lerwick Shetland, ZE1 0AB



- ✓ Spacious Ground Floor Flat
- ✓ Two Bedrooms
- ✓ Immaculate Move In Condition
- ✓ Open Plan Living / Kitchen / Dining

- ✓ Central Location
- ✓ Stunning Harbour Views
- ✓ Ideal Buy To Let

Offers Over **£210,000**

Bedroom  2 Bathroom  1 Reception  1