

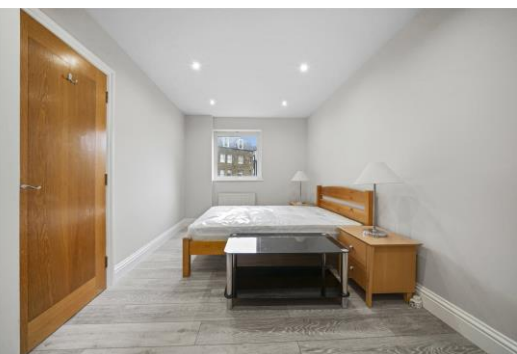


Marys Court

4 Palgrave Gardens, NW1

£2,210 pcm

A bright and spacious apartment in an exclusive gated portered development with Gym & Swimming Pool. Located on Park Road opposite Regent's Park and close to Baker Street Underground Station.



Marys Court

4 Palgrave Gardens, NW1

- Exclusive Portered Development
- Swimming Pool and Gym
- Close to Baker Street Underground Station
- 24 Hours Concierge



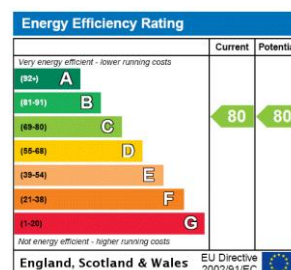
A bright and spacious modern one bedroom apartment in an exclusive gated portered development.

The development also benefits from 24 hour Concierge Service, swimming pool, gym and landscaped communal gardens. Located on Park Road opposite Regent's Park and close to Baker Street Underground Station.

Step free access.

Tenure: To be advised
Furnished, Part Furnished

Additional tenant charges apply (fees apply to non-AST tenancies only)
Tenancy Agreement Fee: £300
References per Tenant/Guarantor: £60
Inventory check (approx. £100 – £250 inc. VAT)
[chestertons.com/property-to-rent/applicable-fees](https://www.chestertons.com/property-to-rent/applicable-fees)



Chestertons St John's Wood Lettings

122 St John's Wood High Street
St John's Wood
London
NW8 7SG
lettings.stjohnswood@chestertons.com
02030408622
[chestertons.com](https://www.chestertons.com)

